

## Product datasheet for **TA351850**

### MED13 Rabbit Polyclonal Antibody

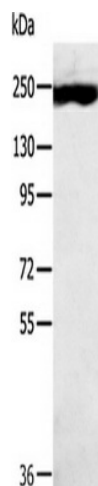
#### Product data:

Product Type:	Primary Antibodies
Applications:	WB
Recommended Dilution:	ELISA: 2000-5000, WB: 500-2000
Reactivity:	Human, Mouse
Host:	Rabbit
Isotype:	IgG
Clonality:	Polyclonal
Immunogen:	Synthetic peptide of human MED13
Formulation:	pH7.4 PBS, 0.05% NaN <sub>3</sub> , 40% Glycerol
Concentration:	lot specific
Purification:	Antigen affinity purification
Conjugation:	Unconjugated
Storage:	Store at -20°C as received.
Stability:	Stable for 12 months from date of receipt.
Predicted Protein Size:	239 kDa
Gene Name:	mediator complex subunit 13
Database Link:	<a href="#">NP_005112</a> <a href="#">Entrez Gene 9969 Human Q9UHV7</a>
Background:	This gene encodes a component of the mediator complex (also known as TRAP, SMCC, DRIP, or ARC), a transcriptional coactivator complex thought to be required for the expression of almost all genes. The mediator complex is recruited by transcriptional activators or nuclear receptors to induce gene expression, possibly by interacting with RNA polymerase II and promoting the formation of a transcriptional pre-initiation complex.
Synonyms:	ARC250; DRIP250; HSPC221; THRAP1; TRAP240
Protein Families:	Druggable Genome, Transcription Factors



[View online »](#)

## Product images:



Gel: 6%SDS-PAGE, Lysate: 40 ug, Lane: K562 cells,  
Primary antibody: (MED13 Antibody) at dilution  
1/300, Secondary antibody: Goat anti rabbit IgG  
at 1/8000 dilution, Exposure time: 10 minutes