

## Product datasheet for **TA351849S**

### MED12 Rabbit Polyclonal Antibody

#### Product data:

Product Type:	Primary Antibodies
Applications:	IHC
Recommended Dilution:	IHC: 25-100 Positive control: Human ovarian cancer Predicted cell location: Nucleus
Reactivity:	Human, Mouse
Host:	Rabbit
Isotype:	IgG
Clonality:	Polyclonal
Immunogen:	Synthetic peptide of human MED12
Formulation:	pH7.4 PBS, 0.05% NaN <sub>3</sub> , 40% Glycerol
Purification:	Antigen affinity purification
Conjugation:	Unconjugated
Storage:	Store at -20°C as received.
Stability:	Stable for 12 months from date of receipt.
Gene Name:	mediator complex subunit 12
Database Link:	<a href="#">NP_005111</a> <a href="#">Entrez Gene 9968 Human</a> <a href="#">Q93074</a>

**Background:** The initiation of transcription is controlled in part by a large protein assembly known as the preinitiation complex. A component of this preinitiation complex is a 1.2 MDa protein aggregate called Mediator. This Mediator component binds with a CDK8 subcomplex which contains the protein encoded by this gene, mediator complex subunit 12 (MED12), along with MED13, CDK8 kinase, and cyclin C. The CDK8 subcomplex modulates Mediator-polymerase II interactions and thereby regulates transcription initiation and reinitiation rates. The MED12 protein is essential for activating CDK8 kinase. Defects in this gene cause X-linked Opitz-Kaveggia syndrome, also known as FG syndrome, and Lujan-Fryns syndrome.

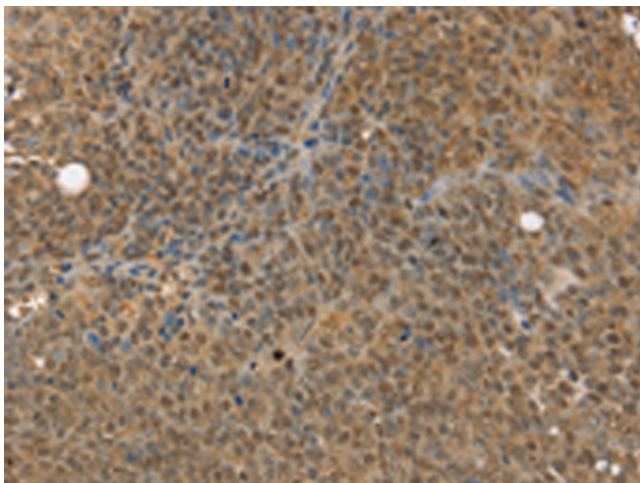
**Synonyms:** ARC240; CAGH45; FGS1; HOPA; MED12S; OHDOX; OKS; OPA1; TNRC11; TRAP230



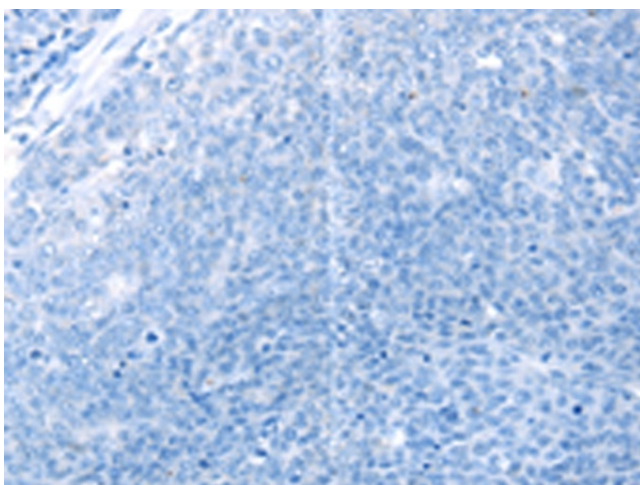
[View online »](#)

Protein Families: Druggable Genome

### Product images:



Immunohistochemistry of paraffin-embedded Human ovarian cancer tissue using [TA351849] (MED12 Antibody) at dilution 1/30 (Original magnification: x200)



Immunohistochemistry of paraffin-embedded Human ovarian cancer tissue using [TA351849] (MED12 Antibody) at dilution 1/30, treated with synthetic peptide. (Original magnification: x200)