

Product datasheet for **TA351848**

Transglutaminase 7 (TGM7) Rabbit Polyclonal Antibody

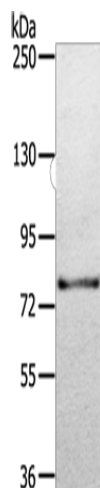
Product data:

| | |
|-------------------------|--|
| Product Type: | Primary Antibodies |
| Applications: | WB |
| Recommended Dilution: | WB: 200-1000 WB positive control: Mouse eyes tissue |
| Reactivity: | Human, Mouse |
| Host: | Rabbit |
| Isotype: | IgG |
| Clonality: | Polyclonal |
| Immunogen: | Synthetic peptide of human TGM7 |
| Formulation: | pH7.4 PBS, 0.05% NaN ₃ , 40% Glycerol |
| Concentration: | lot specific |
| Purification: | Antigen affinity purification |
| Conjugation: | Unconjugated |
| Storage: | Store at -20°C as received. |
| Stability: | Stable for 12 months from date of receipt. |
| Predicted Protein Size: | 80 kDa |
| Gene Name: | transglutaminase 7 |
| Database Link: | NP_443187 Entrez Gene 640543 Mouse Entrez Gene 116179 Human Q96PF1 |
| Background: | Transglutaminases (TGM; EC 2.3.2.13) are a family of structurally and functionally related enzymes that stabilize protein assemblies through the formation of gamma-glutamyl-epsilon lysine crosslinks. For additional background information on transglutaminases, see TGM1 (MIM 190195). |
| Synonyms: | TGMZ |
| Protein Families: | Druggable Genome |



[View online »](#)

Product images:



Gel: 6%SDS-PAGE
Lysate: 40 μ g
Lane: Mouse eyes tissue
Primary antibody: TA351848 (TGM7 Antibody) at dilution 1/300
Secondary antibody: Goat anti rabbit IgG at 1/8000 dilution
Exposure time: 5 seconds