

## Product datasheet for **TA351846S**

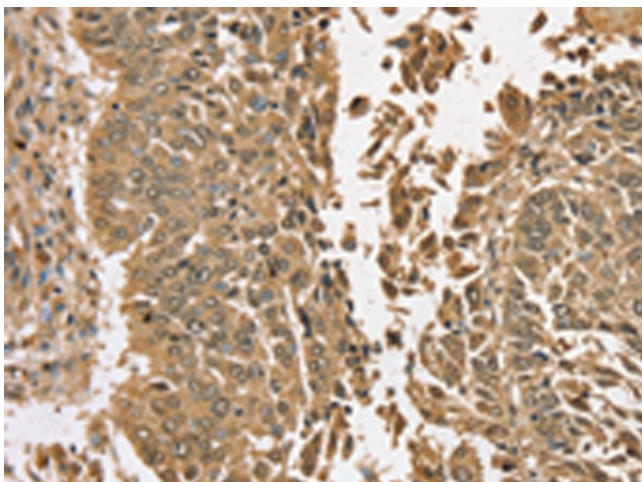
### Transglutaminase 6 (TGM6) Rabbit Polyclonal Antibody

#### Product data:

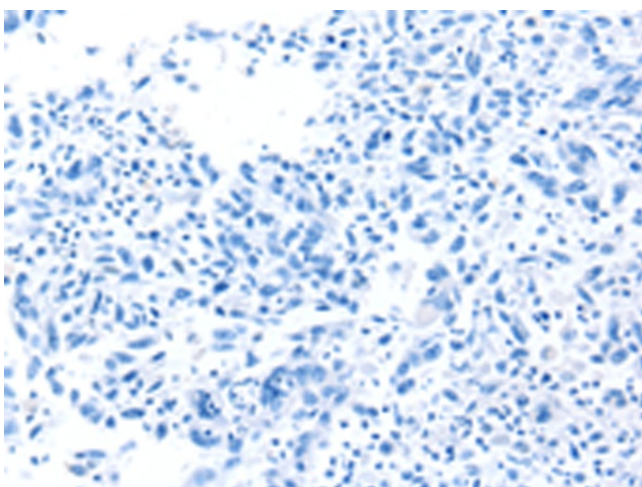
Product Type:	Primary Antibodies
Applications:	IHC
Recommended Dilution:	IHC: 25-100 Positive control: Human lung cancer Predicted cell location: Nucleus
Reactivity:	Human
Host:	Rabbit
Isotype:	IgG
Clonality:	Polyclonal
Immunogen:	Synthetic peptide of human TGM6
Formulation:	pH7.4 PBS, 0.05% NaN <sub>3</sub> , 40% GlycerolIn
Purification:	Antigen affinity purification
Conjugation:	Unconjugated
Storage:	Store at -20°C as received.
Stability:	Stable for 12 months from date of receipt.
Gene Name:	transglutaminase 6
Database Link:	<a href="#">NP_945345</a> <a href="#">Entrez Gene 343641 Human</a> <a href="#">O95932</a>
Background:	The protein encoded by this gene belongs to the transglutaminase superfamily. It catalyzes the cross-linking of proteins and the conjugation of polyamines to proteins. Mutations in this gene are associated with spinocerebellar ataxia type 35 (SCA35). Alternatively spliced transcript variants encoding different isoforms have been found for this gene.
Synonyms:	dj734P14.3; SCA35; TG6; TGM3L; TGY
Protein Families:	Druggable Genome



[View online »](#)

**Product images:**

Immunohistochemistry of paraffin-embedded Human lung cancer tissue using [TA351846] (TGM6 Antibody) at dilution 1/35 (Original magnification:  $\times 200$ )



Immunohistochemistry of paraffin-embedded Human lung cancer tissue using [TA351846] (TGM6 Antibody) at dilution 1/35, treated with synthetic peptide. (Original magnification:  $\times 200$ )