

## Product datasheet for **TA351843**

### TPST1 Rabbit Polyclonal Antibody

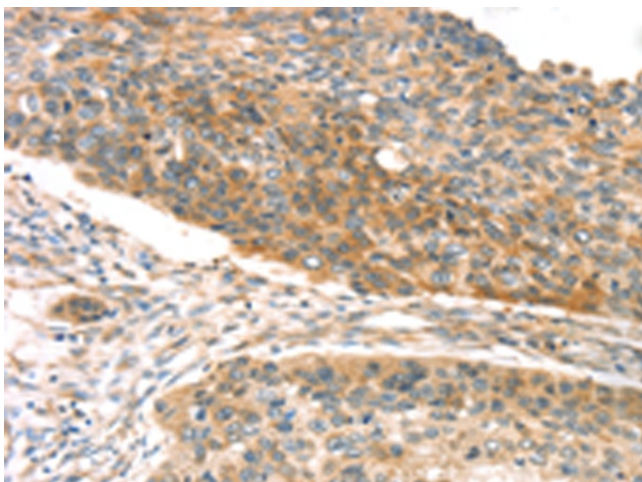
#### Product data:

Product Type:	Primary Antibodies
Applications:	IHC
Recommended Dilution:	IHC: 20-100 Positive control: Human esophagus cancer Predicted cell location: Cytoplasm and Cell membrane
Reactivity:	Human, Mouse, Rat
Host:	Rabbit
Isotype:	IgG
Clonality:	Polyclonal
Immunogen:	Synthetic peptide of human TPST1
Formulation:	pH7.4 PBS, 0.05% NaN <sub>3</sub> , 40% Glycerol
Concentration:	lot specific
Purification:	Antigen affinity purification
Conjugation:	Unconjugated
Storage:	Store at -20°C as received.
Stability:	Stable for 12 months from date of receipt.
Gene Name:	tyrosylprotein sulfotransferase 1
Database Link:	<a href="#">NP_003587</a> <a href="#">Entrez Gene 8460 Human</a> <a href="#">O60507</a>
Background:	Catalyzes the O-sulfation of tyrosine residues within acidic motifs of polypeptides.
Synonyms:	TANGO13A

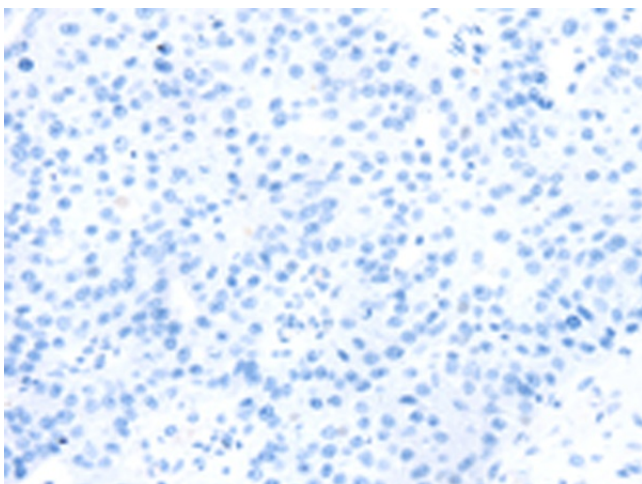


[View online »](#)

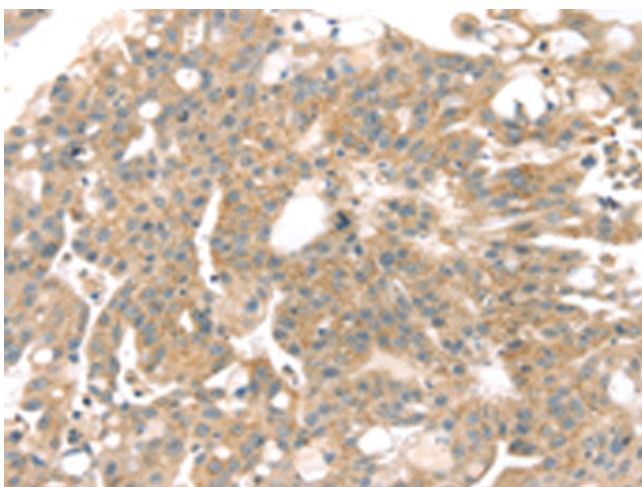
## Product images:



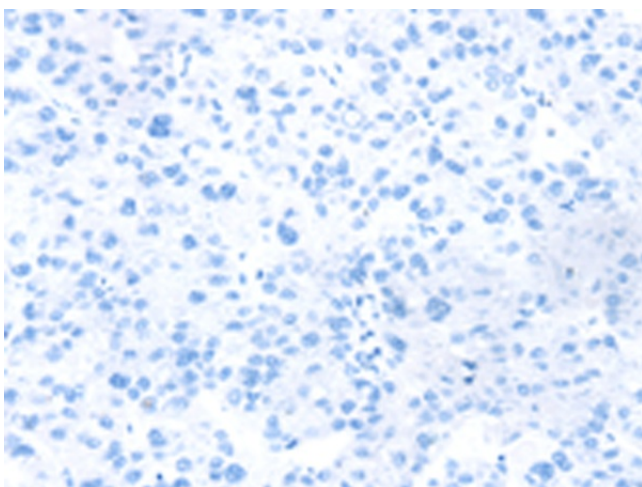
Immunohistochemistry of paraffin-embedded Human esophagus cancer tissue using TA351843 (TPST1 Antibody) at dilution 1/20 (Original magnification:  $\times 200$ )



Immunohistochemistry of paraffin-embedded Human esophagus cancer tissue using TA351843 (TPST1 Antibody) at dilution 1/20, treated with synthetic peptide. (Original magnification:  $\times 200$ )



Immunohistochemistry of paraffin-embedded Human breast cancer tissue using TA351843 (TPST1 Antibody) at dilution 1/20 (Original magnification:  $\times 200$ )



Immunohistochemistry of paraffin-embedded Human breast cancer tissue using TA351843 (TPST1 Antibody) at dilution 1/20, treated with synthetic peptide. (Original magnification:  $\times 200$ )