

## Product datasheet for **TA351839**

### TPD52L2 Rabbit Polyclonal Antibody

#### Product data:

Product Type:	Primary Antibodies
Applications:	IHC, WB
Recommended Dilution:	WB: 500-2000 WB positive control: 293T and MCF7 cells, mouse brain tissue and K562 cells, mouse bladder tissue IHC: 25-100 Positive control: Human liver cancer Predicted cell location: Cytoplasm
Reactivity:	Human, Mouse
Host:	Rabbit
Isotype:	IgG
Clonality:	Polyclonal
Immunogen:	Synthetic peptide of human TPD52L2
Formulation:	pH7.4 PBS, 0.05% NaN <sub>3</sub> , 40% Glycerol
Concentration:	lot specific
Purification:	Antigen affinity purification
Conjugation:	Unconjugated
Storage:	Store at -20°C as received.
Stability:	Stable for 12 months from date of receipt.
Predicted Protein Size:	22 kDa
Gene Name:	tumor protein D52 like 2
Database Link:	<a href="#">NP_003279</a> <a href="#">Entrez Gene 66314 Mouse</a> <a href="#">Entrez Gene 7165 Human</a> <a href="#">O43399</a>



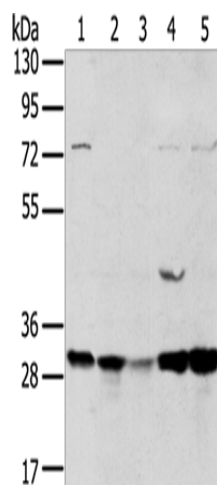
[View online »](#)

**Background:**

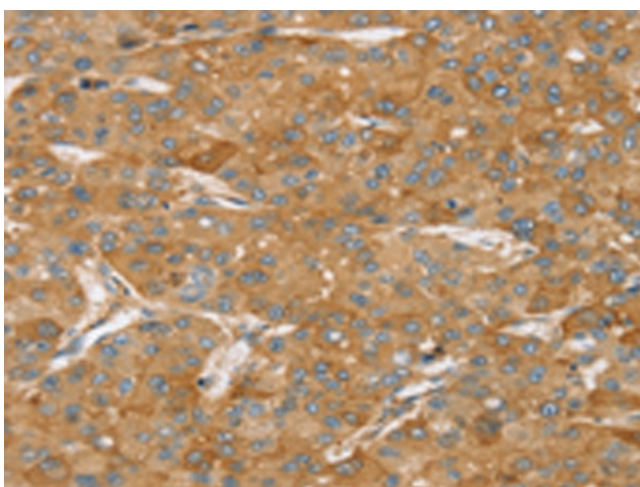
This gene encodes a member of the tumor protein D52-like family. These proteins are characterized by an N-terminal coiled-coil motif that is used to form homo- and heteromeric complexes with other tumor protein D52-like proteins. Expression of this gene may be a marker for breast cancer and acute lymphoblastic leukemia. Alternatively spliced transcript variants encoding multiple isoforms have been observed for this gene, and a pseudogene of this gene is located on the long arm of chromosome 12.

**Synonyms:**

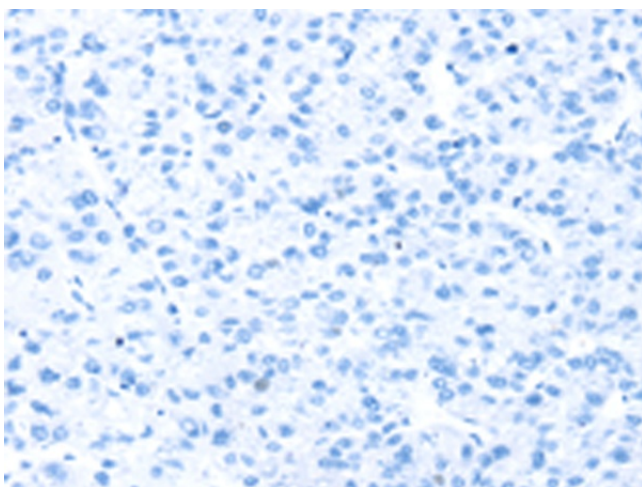
D54

**Product images:**


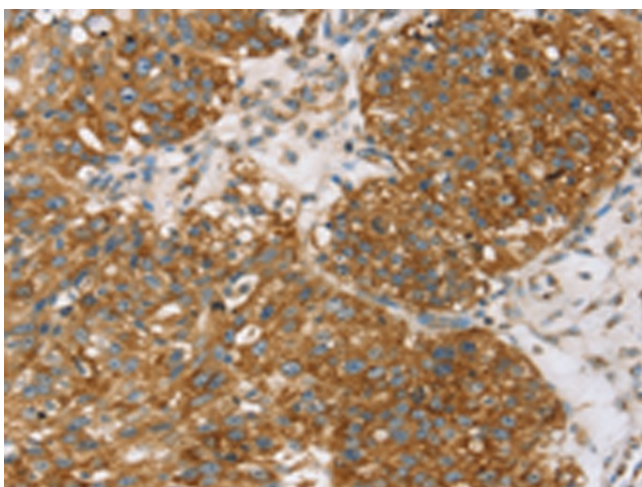
Gel: 8%SDS-PAGE  
 Lysate: 40 µg  
 Lane 1-5: 293T cells  
 MCF7 cells  
 mouse brain tissue  
 K562 cells  
 mouse bladder tissue  
 Primary antibody: TA351839 (TPD52L2 Antibody)  
 at dilution 1/400  
 Secondary antibody: Goat anti rabbit IgG at  
 1/8000 dilution  
 Exposure time: 20 seconds



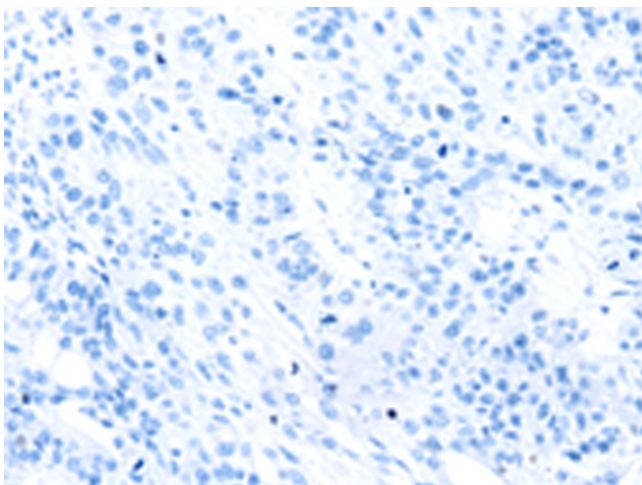
Immunohistochemistry of paraffin-embedded  
 Human liver cancer tissue using TA351839  
 (TPD52L2 Antibody) at dilution 1/35 (Original  
 magnification: ×200)



Immunohistochemistry of paraffin-embedded Human liver cancer tissue using TA351839 (TPD52L2 Antibody) at dilution 1/35, treated with synthetic peptide. (Original magnification:  $\times 200$ )



Immunohistochemistry of paraffin-embedded Human breast cancer tissue using TA351839 (TPD52L2 Antibody) at dilution 1/35 (Original magnification:  $\times 200$ )



Immunohistochemistry of paraffin-embedded Human breast cancer tissue using TA351839 (TPD52L2 Antibody) at dilution 1/35, treated with synthetic peptide. (Original magnification:  $\times 200$ )