

Product datasheet for **TA351837**

TPD52 Rabbit Polyclonal Antibody

Product data:

Product Type:	Primary Antibodies
Applications:	WB
Recommended Dilution:	WB: 500-2000 WB positive control: Raji, 231, 293T and A549 cells
Reactivity:	Human
Host:	Rabbit
Isotype:	IgG
Clonality:	Polyclonal
Immunogen:	Synthetic peptide of human TPD52
Formulation:	pH7.4 PBS, 0.05% NaN ₃ , 40% Glycerol
Concentration:	lot specific
Purification:	Antigen affinity purification
Conjugation:	Unconjugated
Storage:	Store at -20°C as received.
Stability:	Stable for 12 months from date of receipt.
Predicted Protein Size:	24 kDa
Gene Name:	tumor protein D52
Database Link:	NP_005070 Entrez Gene 7163 Human P55327

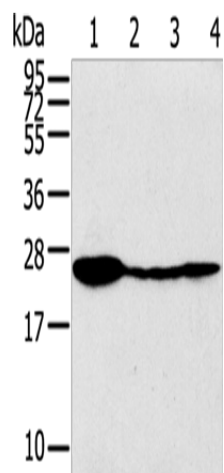
Background: The tumor protein D52 (TPD52) family consists of three members, TPD52, TPD52L1 (D53), and TPD52L2 (D54). These small coiled-coil motif bearing proteins interact in hetero- and homomeric fashion. The TPD52 gene maps to chromosome 8q21, and due to amplification, shows frequent overexpression in prostate and breast carcinomas. TPD52 bound to annexin VI in a Ca²⁺-dependent manner, suggesting that these molecules may act in concert to regulate secretory processes in plasma cells.

Synonyms: D52; hD52; N8L; PC-1; PrLZ



[View online »](#)

Product images:



Gel: 12%SDS-PAGE

Lysate: 40 μ g

Lane 1-4: Raji cells

231 cells

293T cells

A549 cells

Primary antibody: TA351837 (TPD52 Antibody) at dilution 1/320

Secondary antibody: Goat anti rabbit IgG at 1/8000 dilution

Exposure time: 5 seconds