

Product datasheet for **TA351836S**

EI24 Rabbit Polyclonal Antibody

Product data:

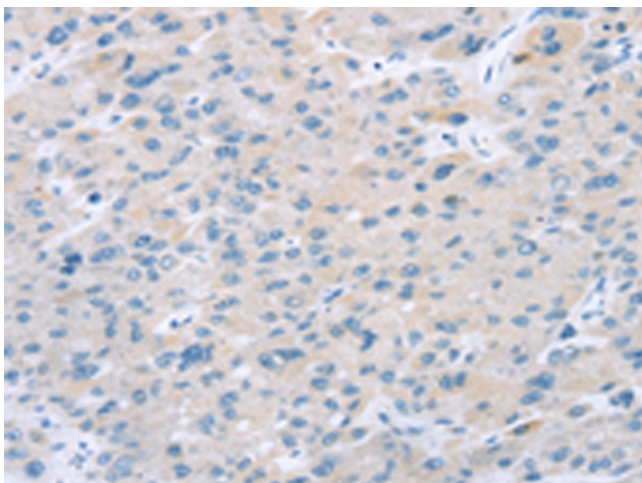
| | |
|-----------------------|---|
| Product Type: | Primary Antibodies |
| Applications: | IHC |
| Recommended Dilution: | IHC: 10-50 Positive control: Human liver cancer Predicted cell location: Cytoplasm |
| Reactivity: | Human, Mouse, Rat |
| Host: | Rabbit |
| Isotype: | IgG |
| Clonality: | Polyclonal |
| Immunogen: | Synthetic peptide of human EI24 |
| Formulation: | pH7.4 PBS, 0.05% NaN ₃ , 40% GlycerolIn |
| Purification: | Antigen affinity purification |
| Conjugation: | Unconjugated |
| Storage: | Store at -20°C as received. |
| Stability: | Stable for 12 months from date of receipt. |
| Gene Name: | EI24, autophagy associated transmembrane protein |
| Database Link: | NP_004870 Entrez Gene 13663 Mouse Entrez Gene 300514 Rat Entrez Gene 9538 Human O14681 |
| Background: | This gene encodes a putative tumor suppressor and has higher expression in p53-expressing cells than in control cells and is an immediate-early induction target of p53-mediated apoptosis. The encoded protein may suppress cell growth by inducing apoptotic cell death through the caspase 9 and mitochondrial pathways. This gene is located on human chromosome 11q24, a region frequently altered in cancers. Alternative splicing results in multiple transcript variants. Pseudogenes of this gene have been defined on chromosomes 1, 3, 7, and 8. |
| Synonyms: | EPG4; PIG8; TP53I8 |
| Protein Families: | Druggable Genome, Transmembrane |



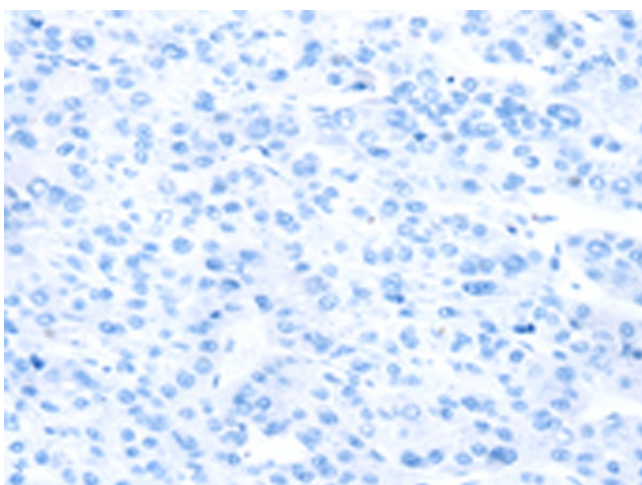
[View online »](#)

Protein Pathways: p53 signaling pathway

Product images:



Immunohistochemistry of paraffin-embedded Human liver cancer tissue using [TA351836] (E124 Antibody) at dilution 1/25 (Original magnification: ×200)



Immunohistochemistry of paraffin-embedded Human liver cancer tissue using [TA351836] (E124 Antibody) at dilution 1/25, treated with synthetic peptide. (Original magnification: ×200)