

Product datasheet for **TA351835**

TP53I11 Rabbit Polyclonal Antibody

Product data:

Product Type:	Primary Antibodies
Applications:	IHC, WB
Recommended Dilution:	WB: 500-2000 WB positive control: Jurkat cells IHC: 25-100 Positive control: Human liver cancer Predicted cell location: Cytoplasm
Reactivity:	Human, Mouse, Rat
Host:	Rabbit
Isotype:	IgG
Clonality:	Polyclonal
Immunogen:	Synthetic peptide of human TP53I11
Formulation:	pH7.4 PBS, 0.05% NaN ₃ , 40% Glycerol
Concentration:	lot specific
Purification:	Antigen affinity purification
Conjugation:	Unconjugated
Storage:	Store at -20°C as received.
Stability:	Stable for 12 months from date of receipt.
Predicted Protein Size:	21 kDa
Gene Name:	tumor protein p53 inducible protein 11
Database Link:	NP_006025 Entrez Gene 9537 Human O14683



[View online »](#)

Background:

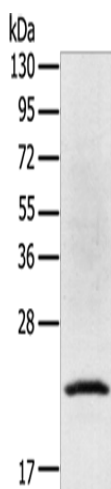
TP53I11 is a 177 amino acid tumor suppressor belonging to the p53-induced protein gene (PIG) family. The PIG gene family encodes redox-controlling proteins that are involved in p53 tumor suppressor activity. It is suggested that PIG11 is involved in arsenic trioxide As₂O₃-induced apoptosis in certain cell lines and may play a significant role in tumor suppression through promotion of cell apoptosis. The gene encoding PIG11 maps to human chromosome 11, which houses over 1,400 genes and comprises nearly 4% of the human genome.

Synonyms:

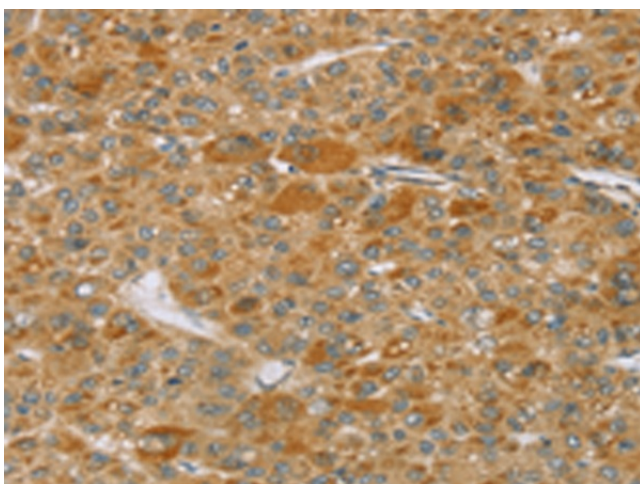
PIG11

Protein Families:

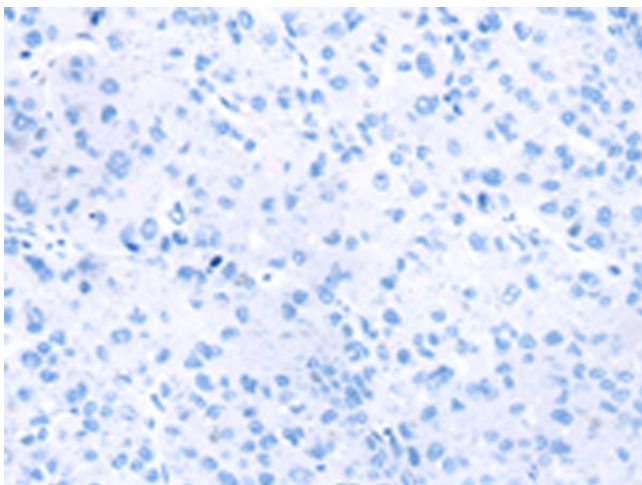
Druggable Genome, Transmembrane

Product images:

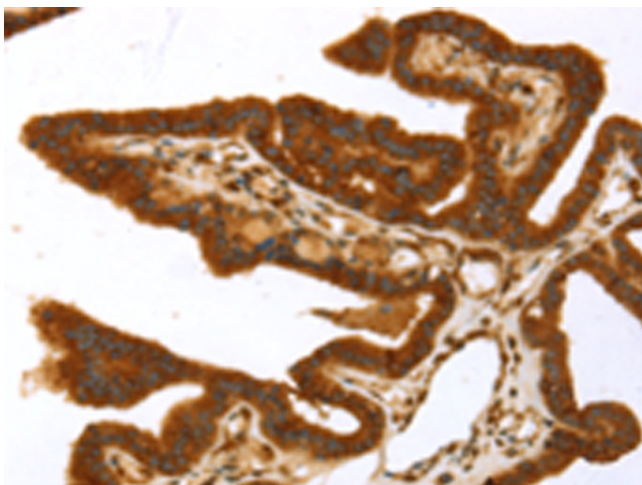
Gel: 8%SDS-PAGE
Lysate: 40 µg
Lane: Jurkat cells
Primary antibody: TA351835 (TP53I11 Antibody) at dilution 1/400
Secondary antibody: Goat anti rabbit IgG at 1/8000 dilution
Exposure time: 1 second



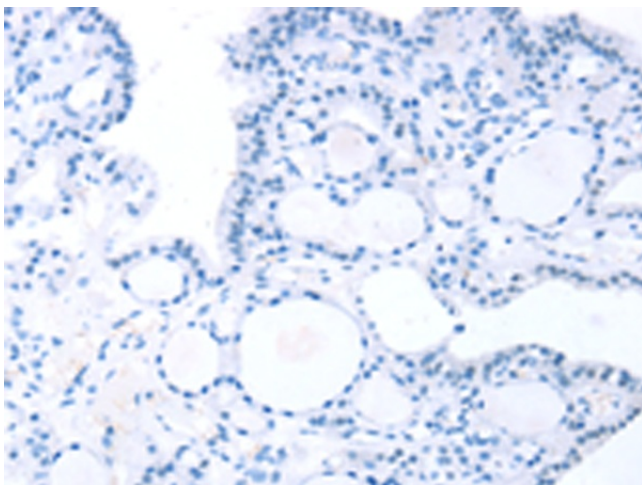
Immunohistochemistry of paraffin-embedded Human liver cancer tissue using TA351835 (TP53I11 Antibody) at dilution 1/40 (Original magnification: ×200)



Immunohistochemistry of paraffin-embedded Human liver cancer tissue using TA351835 (TP53I11 Antibody) at dilution 1/40, treated with synthetic peptide. (Original magnification: $\times 200$)



Immunohistochemistry of paraffin-embedded Human thyroid cancer tissue using TA351835 (TP53I11 Antibody) at dilution 1/40 (Original magnification: $\times 200$)



Immunohistochemistry of paraffin-embedded Human thyroid cancer tissue using TA351835 (TP53I11 Antibody) at dilution 1/40, treated with synthetic peptide. (Original magnification: $\times 200$)