

## Product datasheet for **TA351833S**

### Topoisomerase II beta (TOP2B) Rabbit Polyclonal Antibody

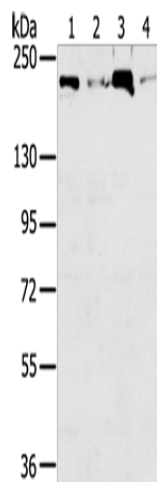
#### Product data:

Product Type:	Primary Antibodies
Applications:	WB
Recommended Dilution:	WB: 500-2000 WB positive control: Raw264.7, Jurkat, K562 and hepg2 cells
Reactivity:	Human, Mouse
Host:	Rabbit
Isotype:	IgG
Clonality:	Polyclonal
Immunogen:	Synthetic peptide of human TOP2B
Formulation:	pH7.4 PBS, 0.05% NaN <sub>3</sub> , 40% Glycerol
Purification:	Antigen affinity purification
Conjugation:	Unconjugated
Storage:	Store at -20°C as received.
Stability:	Stable for 12 months from date of receipt.
Predicted Protein Size:	183 kDa
Gene Name:	topoisomerase (DNA) II beta
Database Link:	<a href="#">NP_001059</a> <a href="#">Entrez Gene 21974 Mouse</a> <a href="#">Entrez Gene 7155 Human</a> <a href="#">Q02880</a>
Background:	This gene encodes a DNA topoisomerase, an enzyme that controls and alters the topologic states of DNA during transcription. This nuclear enzyme is involved in processes such as chromosome condensation, chromatid separation, and the relief of torsional stress that occurs during DNA transcription and replication. It catalyzes the transient breaking and rejoining of two strands of duplex DNA which allows the strands to pass through one another, thus altering the topology of DNA.
Synonyms:	top2beta; TOPIIB
Protein Families:	Druggable Genome



[View online »](#)

## Product images:



Gel: 6%SDS-PAGE

Lysate: 40  $\mu$ g

Lane 1-4: Raw264.7

Jurkat cells

K562 cells

hepg2 cells

Primary antibody: [TA351833] (TOP2B Antibody)  
at dilution 1/250

Secondary antibody: Goat anti rabbit IgG at  
1/8000 dilution

Exposure time: 40 seconds