

## Product datasheet for **TA351828**

### APRIL (TNFSF13) Rabbit Polyclonal Antibody

#### Product data:

Product Type:	Primary Antibodies
Applications:	IHC
Recommended Dilution:	IHC: 30-150 Positive control: Human liver cancer Predicted cell location: Cytoplasm
Reactivity:	Human, Mouse
Host:	Rabbit
Isotype:	IgG
Clonality:	Polyclonal
Immunogen:	Synthetic peptide of human TNFSF13
Formulation:	pH7.4 PBS, 0.05% NaN <sub>3</sub> , 40% Glycerol
Concentration:	lot specific
Purification:	Antigen affinity purification
Conjugation:	Unconjugated
Storage:	Store at -20°C as received.
Stability:	Stable for 12 months from date of receipt.
Gene Name:	tumor necrosis factor superfamily member 13
Database Link:	<a href="#">NP_003799</a> <a href="#">Entrez Gene 69583 Mouse</a> <a href="#">Entrez Gene 8741 Human</a> <a href="#">O75888</a>



[View online »](#)

**Background:**

The protein encoded by this gene is a member of the tumor necrosis factor (TNF) ligand family. This protein is a ligand for TNFRSF17/BCMA, a member of the TNF receptor family. This protein and its receptor are both found to be important for B cell development. In vitro experiments suggested that this protein may be able to induce apoptosis through its interaction with other TNF receptor family proteins such as TNFRSF6/FAS and TNFRSF14/HVEM. Alternative splicing results in multiple transcript variants. Some transcripts that skip the last exon of the upstream gene (TNFSF12) and continue into the second exon of this gene have been identified; such read-through transcripts are contained in GenID 407977, TNFSF12-TNFSF13.

**Synonyms:**

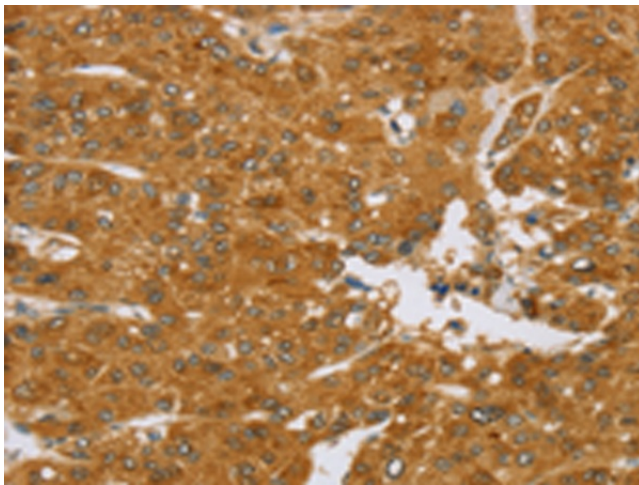
APRIL; CD256; PRO715; TALL-2; TALL2; TNLG7B; TRDL-1; UNQ383; ZTNF2

**Protein Families:**

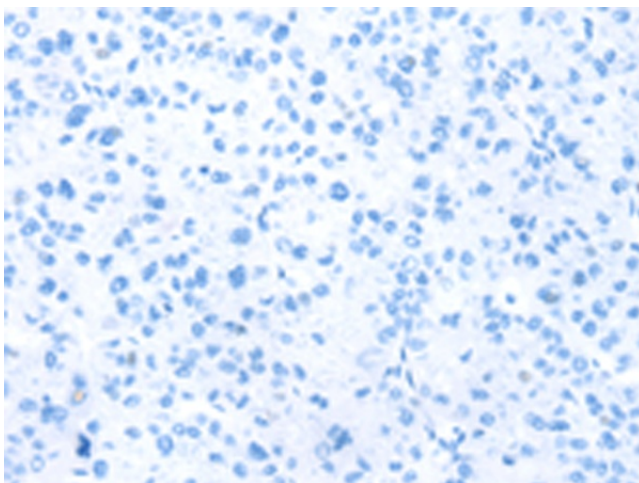
Druggable Genome, Secreted Protein, Transmembrane

**Protein Pathways:**

Cytokine-cytokine receptor interaction

**Product images:**

Immunohistochemistry of paraffin-embedded Human liver cancer tissue using TA351828 (TNFSF13 Antibody) at dilution 1/40 (Original magnification:  $\times 200$ )



Immunohistochemistry of paraffin-embedded Human liver cancer tissue using TA351828 (TNFSF13 Antibody) at dilution 1/40, treated with synthetic peptide. (Original magnification:  $\times 200$ )