

## Product datasheet for **TA351825S**

### Pentraxin 3 (PTX3) Rabbit Polyclonal Antibody

#### Product data:

Product Type:	Primary Antibodies
Applications:	IHC, WB
Recommended Dilution:	WB: 200-1000 WB positive control: Human normal lung tissue IHC: 25-100 Positive control: Human esophagus cancer Predicted cell location: Nucleus or Cytoplasm
Reactivity:	Human, Mouse
Host:	Rabbit
Isotype:	IgG
Clonality:	Polyclonal
Immunogen:	Synthetic peptide of human PTX3
Formulation:	pH7.4 PBS, 0.05% NaN <sub>3</sub> , 40% Glycerol
Purification:	Antigen affinity purification
Conjugation:	Unconjugated
Storage:	Store at -20°C as received.
Stability:	Stable for 12 months from date of receipt.
Predicted Protein Size:	42 kDa
Gene Name:	pentraxin 3
Database Link:	<a href="#">NP_002843</a> <a href="#">Entrez Gene 19288 Mouse</a> <a href="#">Entrez Gene 5806 Human</a> <a href="#">P26022</a>

**Background:** Ptx3, also known as tumor necrosis factor-stimulated gene sequence-14 (TSG14), is a secreted pattern-recognition receptor that has a non-redundant role in resistance to selected microbial agents. Ptx3 belongs to the family of ?long pentraxins?, which have C-terminal pentraxin domains and novel amino-terminal domains. Ptx3 binds selected pathogens, including *Aspergillus fumigatus*, *Pseudomonas aeruginosa* and *Salmonella typhimurium*. It is synthesized in IgA glomerulonephritis and activates mesangial cells.

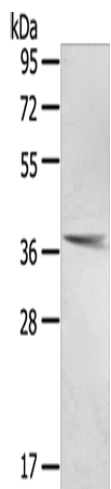


[View online »](#)

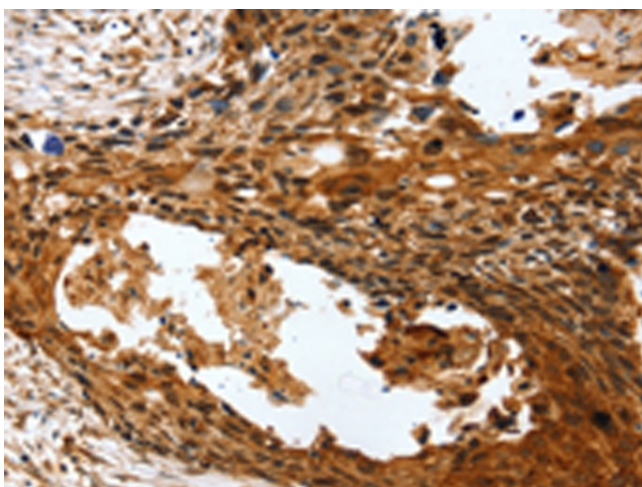
Synonyms: TNFAIP5; TSG-14

Protein Families: Secreted Protein

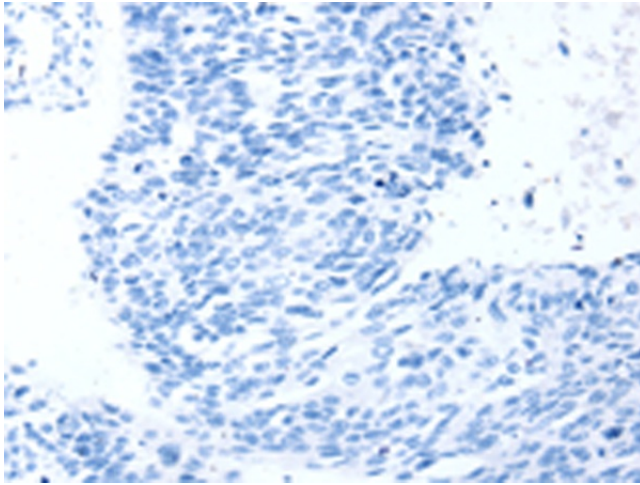
### Product images:



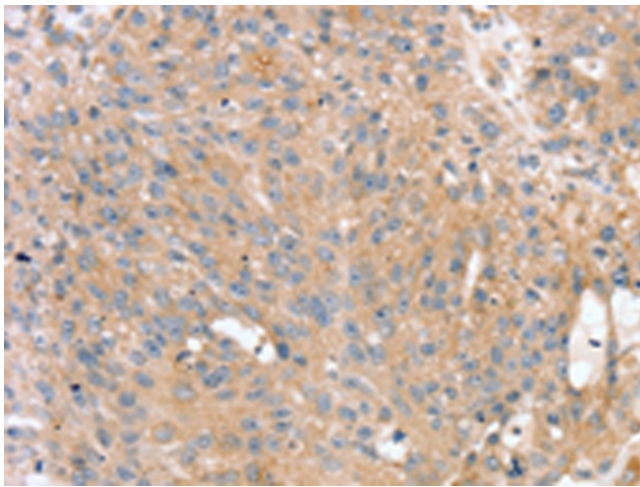
Gel: 8%SDS-PAGE  
Lysate: 40 µg  
Lane: Human normal lung tissue  
Primary antibody: [TA351825] (PTX3 Antibody) at dilution 1/400  
Secondary antibody: Goat anti rabbit IgG at 1/8000 dilution  
Exposure time: 20 seconds



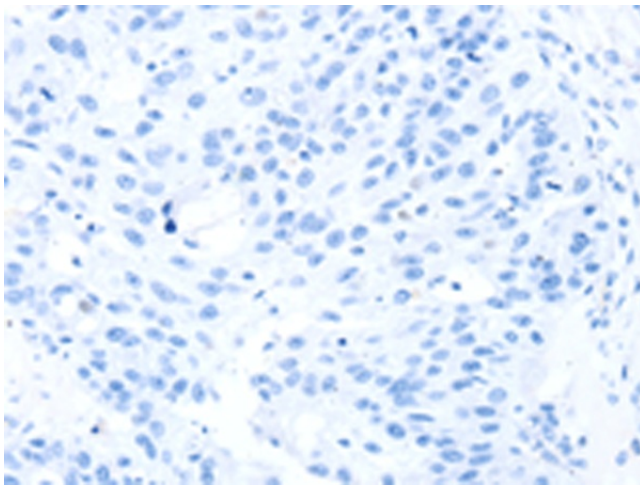
Immunohistochemistry of paraffin-embedded Human esophagus cancer tissue using [TA351825] (PTX3 Antibody) at dilution 1/40 (Original magnification: ×200)



Immunohistochemistry of paraffin-embedded Human esophagus cancer tissue using [TA351825] (PTX3 Antibody) at dilution 1/40, treated with synthetic peptide. (Original magnification:  $\times 200$ )



Immunohistochemistry of paraffin-embedded Human breast cancer tissue using [TA351825] (PTX3 Antibody) at dilution 1/40 (Original magnification:  $\times 200$ )



Immunohistochemistry of paraffin-embedded Human breast cancer tissue using [TA351825] (PTX3 Antibody) at dilution 1/40, treated with synthetic peptide. (Original magnification:  $\times 200$ )