

## Product datasheet for **TA351823**

### **TMPRSS11F Rabbit Polyclonal Antibody**

#### **Product data:**

Product Type:	Primary Antibodies
Applications:	IHC, WB
Recommended Dilution:	WB: 500-2000 WB positive control: Human thyroid and esophagus cancer, human normal rectum tissue IHC: 25-100 Positive control: Human thyroid cancer Predicted cell location: Cytoplasm
Reactivity:	Human, Mouse
Host:	Rabbit
Isotype:	IgG
Clonality:	Polyclonal
Immunogen:	Synthetic peptide of human TMPRSS11F
Formulation:	pH7.4 PBS, 0.05% NaN <sub>3</sub> , 40% Glycerol
Concentration:	lot specific
Purification:	Antigen affinity purification
Conjugation:	Unconjugated
Storage:	Store at -20°C as received.
Stability:	Stable for 12 months from date of receipt.
Predicted Protein Size:	49 kDa
Gene Name:	transmembrane protease, serine 11F
Database Link:	<a href="#">NP_997290</a> <a href="#">Entrez Gene 243083 Mouse</a> <a href="#">Entrez Gene 389208 Human</a> <a href="#">Q6ZWK6</a>



[View online »](#)

**Background:**

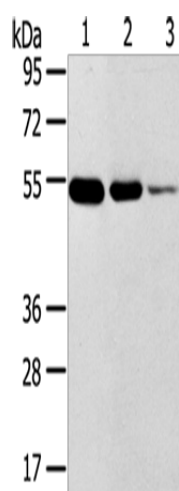
TMPRSS11F is a type-II transmembrane protease, similar to hepsin (TMPRSS1). TMPRSS11F is a member of a larger family of membrane attached serine proteases, a poorly defined group that includes TMPRSS11A, B, C, D, E, F, Hepsin, Corin, Matriptase-1, 2 and 3. TMPRSS11F has a domain structure of an aminoterminal cytoplasmic domain, followed by a transmembrane domain, a SEA domain (Sea urchin sperm protein, Enterokinase, Agrin), a short spacer, then the trypsin-like serine protease domain. The SEA domain is thought to play a role in carbohydrate binding in the analogous protein sequences where it is found, but its role in TMPRSS11F is unclear. The cleavage of the Arg206-Ile207 bond is thought to liberate the catalytic domain.

**Synonyms:**

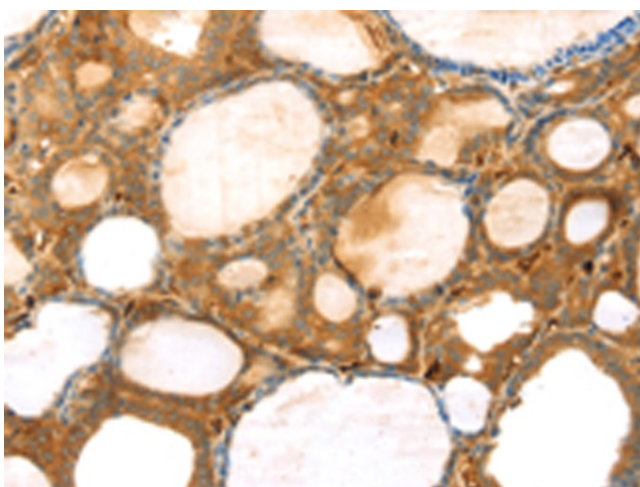
FLJ16046

**Protein Families:**

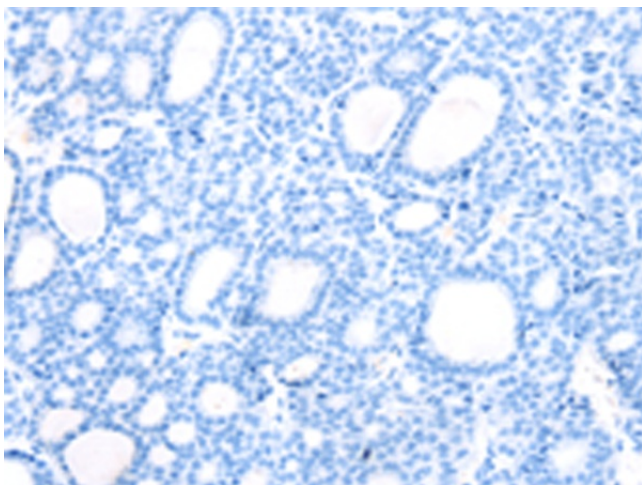
Druggable Genome, Transmembrane

**Product images:**

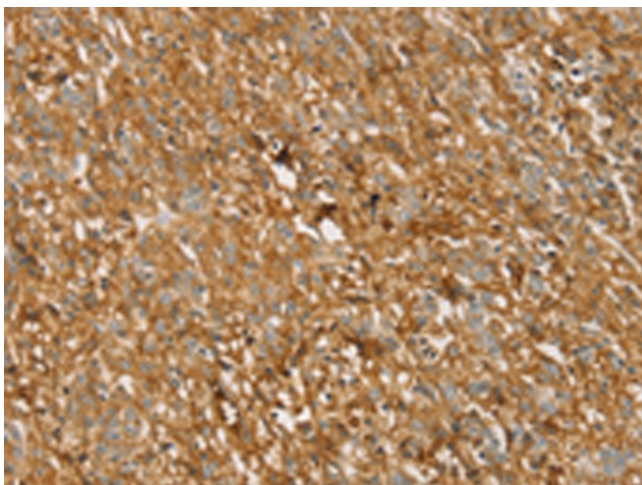
Gel: 8%SDS-PAGE  
Lysate: 40 µg  
Lane 1-3: Human thyroid tissue  
Human esophagus cancer tissue  
human normal rectum tissue  
Primary antibody: TA351823 (TMPRSS11F  
Antibody) at dilution 1/500  
Secondary antibody: Goat anti rabbit IgG at  
1/8000 dilution  
Exposure time: 1 minute



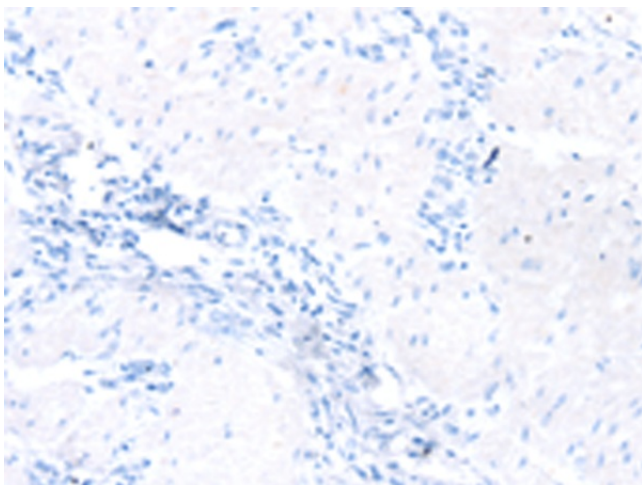
Immunohistochemistry of paraffin-embedded  
Human thyroid cancer tissue using TA351823  
(TMPRSS11F Antibody) at dilution 1/30 (Original  
magnification: ×200)



Immunohistochemistry of paraffin-embedded Human thyroid cancer tissue using TA351823 (TMPRSS11F Antibody) at dilution 1/30, treated with synthetic peptide. (Original magnification: ×200)



Immunohistochemistry of paraffin-embedded Human gastric cancer tissue using TA351823 (TMPRSS11F Antibody) at dilution 1/30 (Original magnification: ×200)



Immunohistochemistry of paraffin-embedded Human gastric cancer tissue using TA351823 (TMPRSS11F Antibody) at dilution 1/30, treated with synthetic peptide. (Original magnification: ×200)