

## Product datasheet for **TA351822**

### **TMEM49 (VMP1) Rabbit Polyclonal Antibody**

#### **Product data:**

Product Type:	Primary Antibodies
Applications:	IHC, WB
Recommended Dilution:	WB: 500-2000 WB positive control: Human plasma solution, HepG2 cell, 293T cell, Hela cell lysates IHC: 50-100 Positive control: Human liver cancer Predicted cell location: Cytoplasm and Nucleus
Reactivity:	Human, Mouse, Rat
Host:	Rabbit
Isotype:	IgG
Clonality:	Polyclonal
Immunogen:	Synthetic peptide of human VMP1
Formulation:	pH7.4 PBS, 0.05% NaN <sub>3</sub> , 40% Glycerol
Concentration:	lot specific
Purification:	Antigen affinity purification
Conjugation:	Unconjugated
Storage:	Store at -20°C as received.
Stability:	Stable for 12 months from date of receipt.
Predicted Protein Size:	46 kDa
Gene Name:	vacuole membrane protein 1
Database Link:	<a href="#">NP_112200</a> <a href="#">Entrez Gene 81671 Human</a> <a href="#">Q96GC9</a>



[View online »](#)

**Background:**

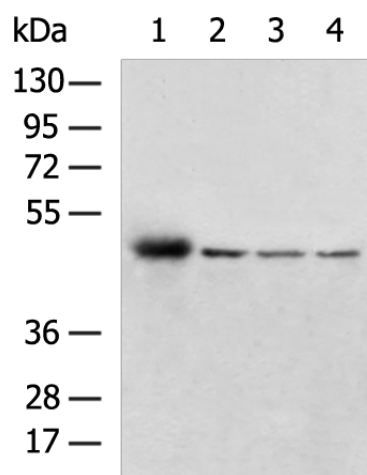
VMP1 (Vacuole membrane protein 1), is a 406 amino acid multi-pass membrane protein that localizes to the endoplasmic reticulum-golgi intermediate compartment membrane. Stress-induced protein that, when overexpressed, promotes formation of intracellular vacuoles followed by cell death. May be involved in the cytoplasmic vacuolization of acinar cells during the early stage of acute pancreatitis. Plays a role in the initial stages of the autophagic process through its interaction with BECN1 (By similarity). Involved in cell-cell adhesion.

**Synonyms:**

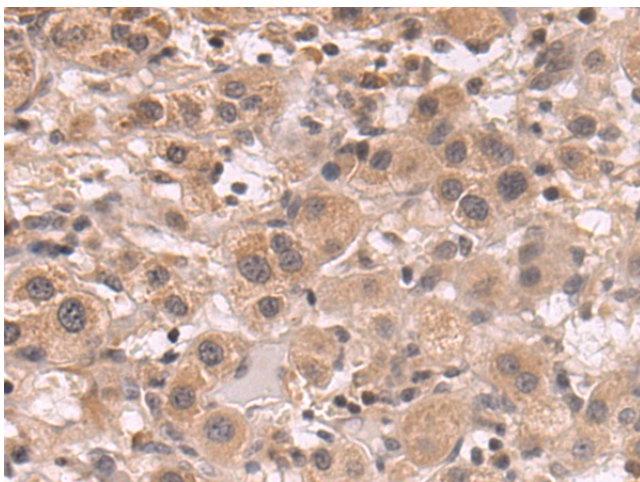
EPG3; TANGO5; TMEM49

**Protein Families:**

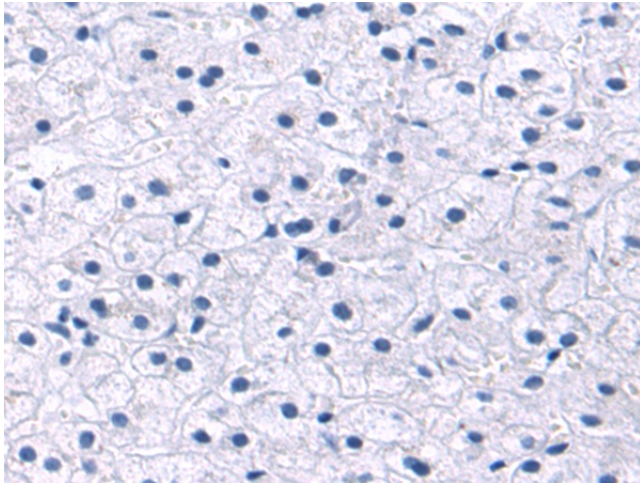
Transmembrane

**Product images:**


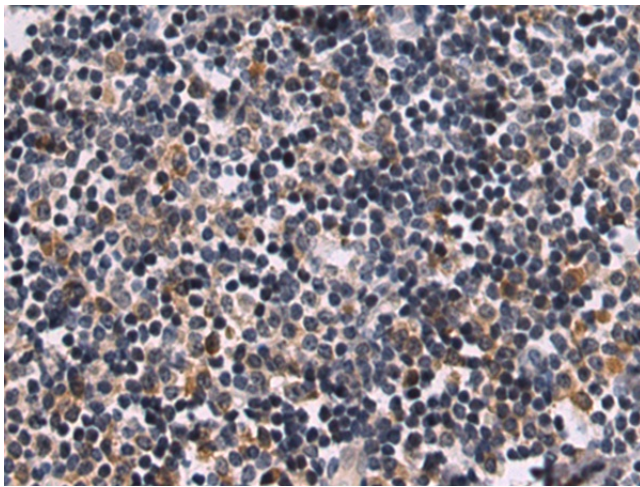
Gel: 8%SDS-PAGE  
 Lysate: 40  $\mu$ g  
 Lane 1-4: Human plasma solution  
 HepG2 cell  
 293T cell  
 Hela cell lysates  
 Primary antibody: TA351822 (VMP1 Antibody) at dilution 1/800  
 Secondary antibody: Goat anti rabbit IgG at 1/5000 dilution  
 Exposure time: 2 minutes



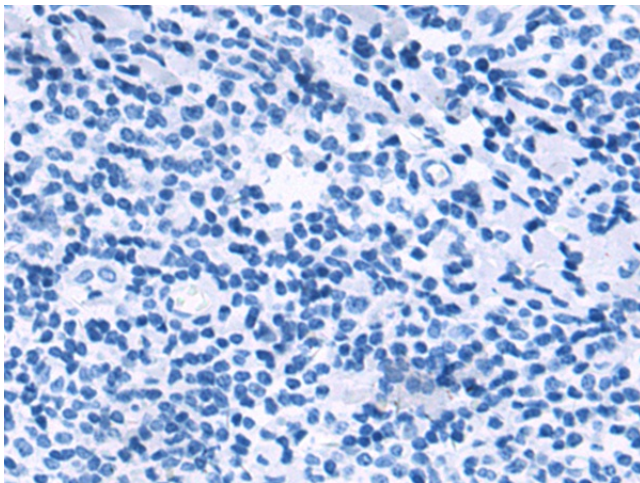
Immunohistochemistry of paraffin-embedded Human liver cancer tissue using TA351822 (VMP1 Antibody) at dilution 1/50 (Original magnification:  $\times$ 200)



Immunohistochemistry of paraffin-embedded Human liver cancer tissue using TA351822 (VMP1 Antibody) at dilution 1/50, treated with synthetic peptide. (Original magnification:  $\times 200$ )



Immunohistochemistry of paraffin-embedded Human tonsil tissue using TA351822 (VMP1 Antibody) at dilution 1/50 (Original magnification:  $\times 200$ )



Immunohistochemistry of paraffin-embedded Human tonsil tissue using TA351822 (VMP1 Antibody) at dilution 1/50, treated with synthetic peptide. (Original magnification:  $\times 200$ )