

## Product datasheet for **TA351821**

### **TMEM166 (EVA1A) Rabbit Polyclonal Antibody**

#### **Product data:**

Product Type:	Primary Antibodies
Applications:	IHC, WB
Recommended Dilution:	WB: 200-1000 WB positive control: Human normal liver tissue IHC: 25-100 Positive control: Human liver cancer Predicted cell location: Cytoplasm
Reactivity:	Human, Mouse
Host:	Rabbit
Isotype:	IgG
Clonality:	Polyclonal
Immunogen:	Synthetic peptide of human EVA1A
Formulation:	pH7.4 PBS, 0.05% NaN <sub>3</sub> , 40% Glycerol
Concentration:	lot specific
Purification:	Antigen affinity purification
Conjugation:	Unconjugated
Storage:	Store at -20°C as received.
Stability:	Stable for 12 months from date of receipt.
Predicted Protein Size:	17 kDa
Gene Name:	eva-1 homolog A, regulator of programmed cell death
Database Link:	<a href="#">NP_001128504</a> <a href="#">Entrez Gene 232146 Mouse</a> <a href="#">Entrez Gene 84141 Human</a> <a href="#">Q9H8M9</a>



[View online »](#)

**Background:**

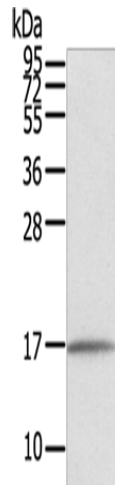
TMEM166, also known as FAM176A (family with sequence similarity 176, member A), is a 152 amino acid protein encoded by a gene mapping to human chromosome 2. The second largest human chromosome, 2 consists of 237 million bases encoding over 1,400 genes and making up approximately 8% of the human genome. A number of genetic diseases are linked to genes on chromosome 2. Harlequin ichthyosis, a rare and morbid skin deformity, is associated with mutations in the ABCA12 gene.

**Synonyms:**

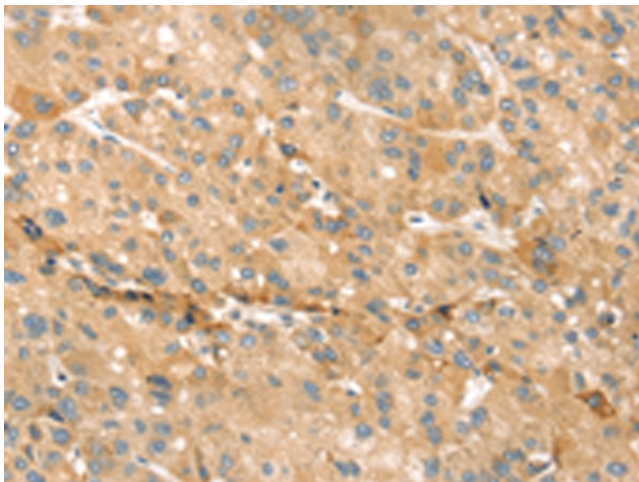
FAM176A; TMEM166

**Protein Families:**

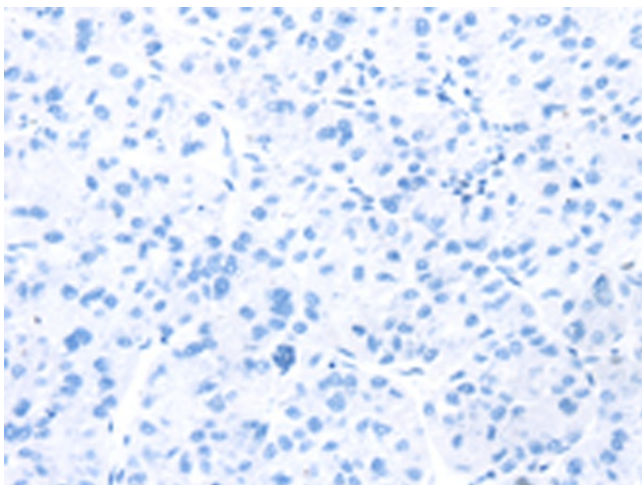
Transmembrane

**Product images:**

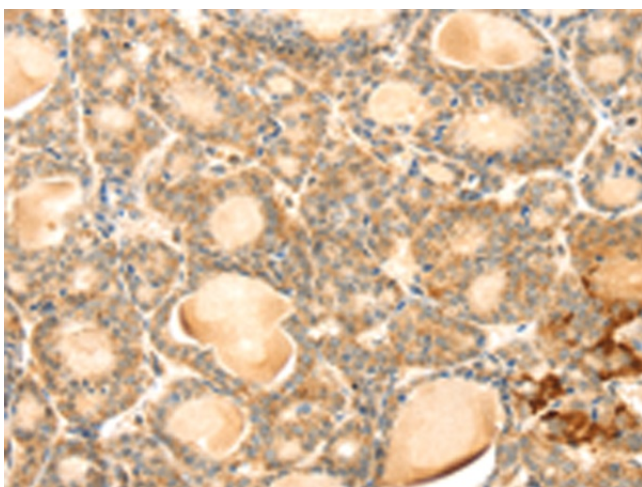
Gel: 12%SDS-PAGE  
Lysate: 40 µg  
Lane: Human normal liver tissue  
Primary antibody: TA351821 (EVA1A Antibody) at dilution 1/550  
Secondary antibody: Goat anti rabbit IgG at 1/8000 dilution  
Exposure time: 10 seconds



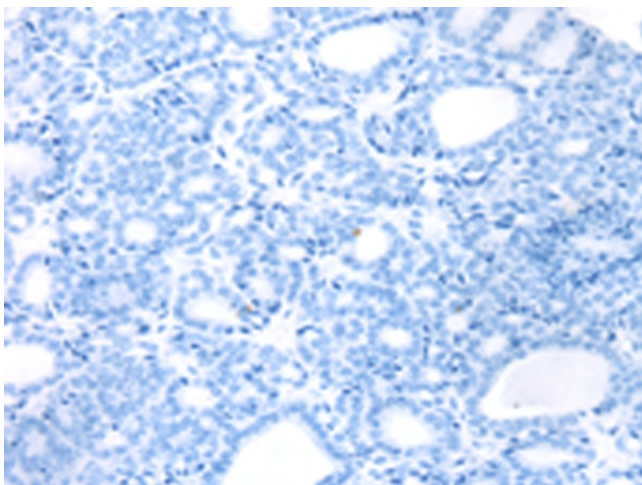
Immunohistochemistry of paraffin-embedded Human liver cancer tissue using TA351821 (EVA1A Antibody) at dilution 1/30 (Original magnification: ×200)



Immunohistochemistry of paraffin-embedded Human liver cancer tissue using TA351821 (EVA1A Antibody) at dilution 1/30, treated with synthetic peptide. (Original magnification: ×200)



Immunohistochemistry of paraffin-embedded Human thyroid cancer tissue using TA351821 (EVA1A Antibody) at dilution 1/30 (Original magnification: ×200)



Immunohistochemistry of paraffin-embedded Human thyroid cancer tissue using TA351821 (EVA1A Antibody) at dilution 1/30, treated with synthetic peptide. (Original magnification: ×200)