

## Product datasheet for **TA351819**

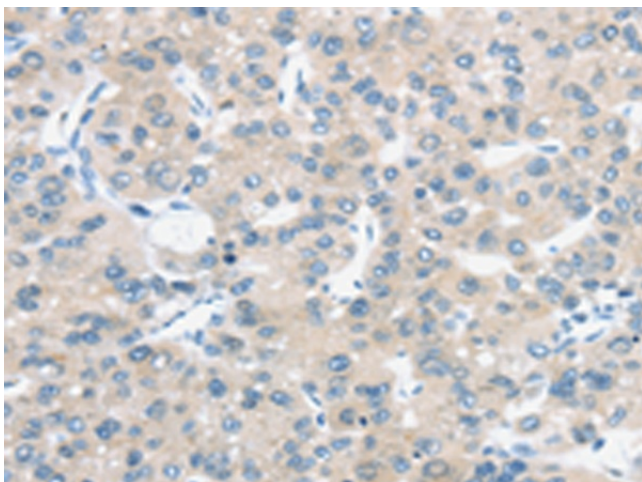
### TM9SF1 Rabbit Polyclonal Antibody

#### Product data:

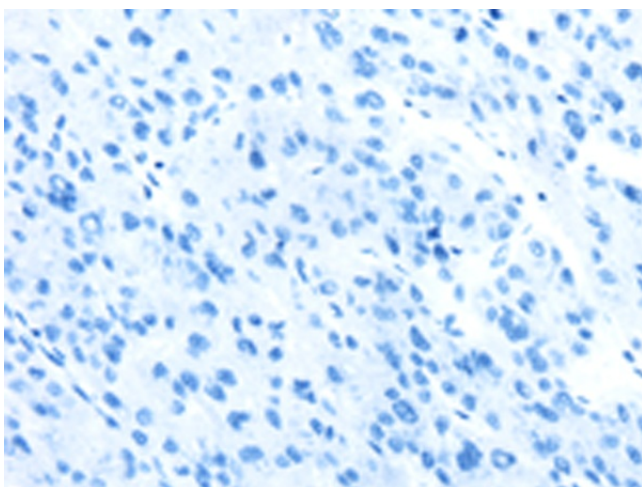
Product Type:	Primary Antibodies
Applications:	IHC
Recommended Dilution:	IHC: 25-100 Positive control: Human liver cancer Predicted cell location: Cytoplasm
Reactivity:	Human, Mouse, Rat
Host:	Rabbit
Isotype:	IgG
Clonality:	Polyclonal
Immunogen:	Synthetic peptide of human TM9SF1
Formulation:	pH7.4 PBS, 0.05% NaN <sub>3</sub> , 40% Glycerol
Concentration:	lot specific
Purification:	Antigen affinity purification
Conjugation:	Unconjugated
Storage:	Store at -20°C as received.
Stability:	Stable for 12 months from date of receipt.
Gene Name:	transmembrane 9 superfamily member 1
Database Link:	<a href="#">NP_006396</a> <a href="#">Entrez Gene 74140 Mouse</a> <a href="#">Entrez Gene 361043 Rat</a> <a href="#">Entrez Gene 10548 Human</a> <a href="#">O15321</a>
Background:	Plays an essential role in autophagy.
Synonyms:	HMP70; MP70
Protein Families:	Transmembrane



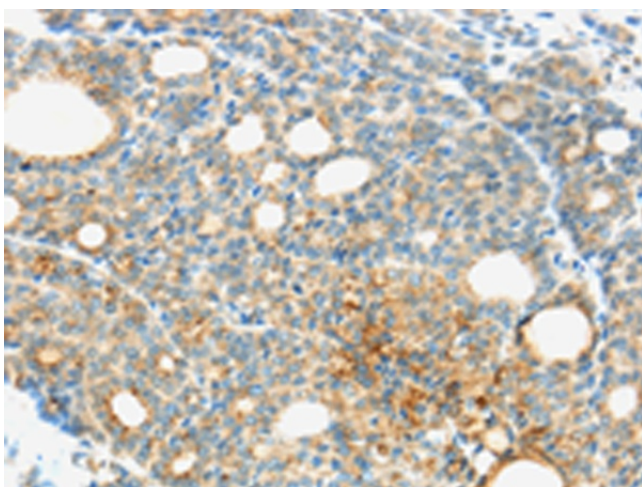
[View online »](#)

**Product images:**

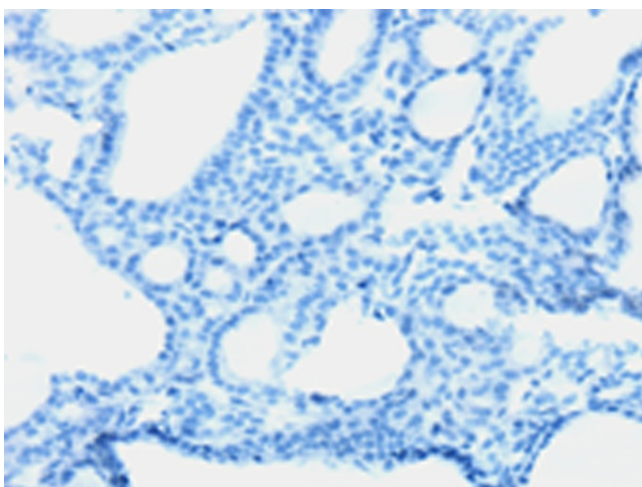
Immunohistochemistry of paraffin-embedded Human liver cancer tissue using TA351819 (TM9SF1 Antibody) at dilution 1/30 (Original magnification: ×200)



Immunohistochemistry of paraffin-embedded Human liver cancer tissue using TA351819 (TM9SF1 Antibody) at dilution 1/30, treated with synthetic peptide. (Original magnification: ×200)



Immunohistochemistry of paraffin-embedded Human thyroid cancer tissue using TA351819 (TM9SF1 Antibody) at dilution 1/30 (Original magnification:  $\times 200$ )



Immunohistochemistry of paraffin-embedded Human thyroid cancer tissue using TA351819 (TM9SF1 Antibody) at dilution 1/30, treated with synthetic peptide. (Original magnification:  $\times 200$ )