

## Product datasheet for **TA351818**

### TM7SF2 Rabbit Polyclonal Antibody

#### Product data:

Product Type:	Primary Antibodies
Applications:	IHC, WB
Recommended Dilution:	WB: 500-2000 WB positive control: Human fetal brain tissue IHC: 25-100 Positive control: Human liver cancer Predicted cell location: Cytoplasm
Reactivity:	Human, Mouse
Host:	Rabbit
Isotype:	IgG
Clonality:	Polyclonal
Immunogen:	Synthetic peptide of human TM7SF2
Formulation:	pH7.4 PBS, 0.05% NaN <sub>3</sub> , 40% Glycerol
Concentration:	lot specific
Purification:	Antigen affinity purification
Conjugation:	Unconjugated
Storage:	Store at -20°C as received.
Stability:	Stable for 12 months from date of receipt.
Predicted Protein Size:	46 kDa
Gene Name:	transmembrane 7 superfamily member 2
Database Link:	<a href="#">NP_003264</a> <a href="#">Entrez Gene 7108 Human</a> <a href="#">O76062</a>



[View online »](#)

**Background:**

Transmembrane 7 superfamily member 2 (TM7SF2, Sterol C14-reductase, 3beta-hydroxysterol Delta-reductase) is a 418 amino acid gene product that belongs to the ERG4/ERG24 family. TM7SF2 is a seven pass transmembrane protein that can localize to the membrane of the endoplasmic reticulum. TM7SF2 is involved in the conversion of lanosterol to cholesterol and, specifically, catalyzes the NADPH dependant reduction of 4,4-dimethyl-5-alpha-cholesta-8,14,24-trien-3-beta-ol to 4,4-dimethyl-5-alpha-cholesta-8,24-dien-3-beta-ol and NADP+.

**Synonyms:**

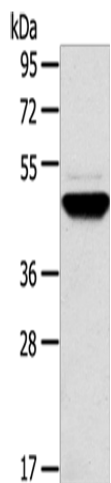
ANG1; DHCR14A; NET47

**Protein Families:**

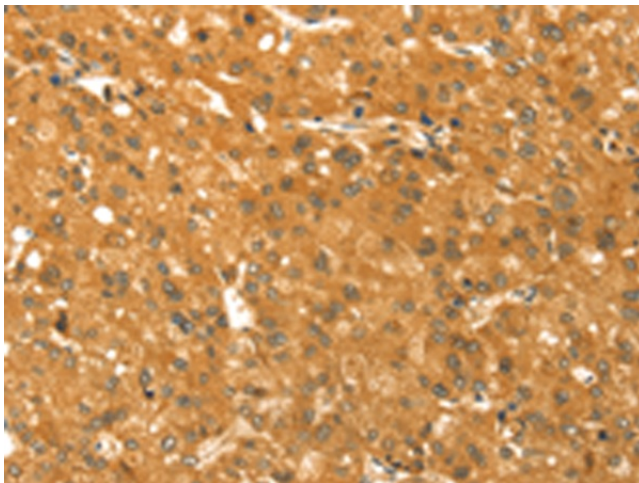
Transmembrane

**Protein Pathways:**

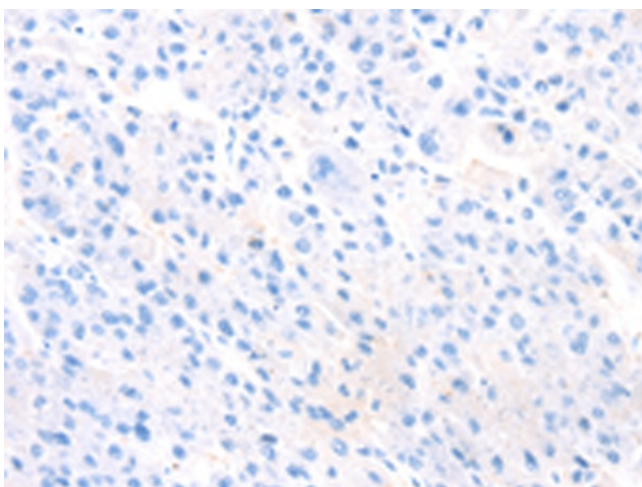
Metabolic pathways, Steroid biosynthesis

**Product images:**

Gel: 8%SDS-PAGE  
Lysate: 40 µg  
Lane: Human fetal brain tissue  
Primary antibody: TA351818 (TM7SF2 Antibody) at dilution 1/500  
Secondary antibody: Goat anti rabbit IgG at 1/8000 dilution  
Exposure time: 1 minute



Immunohistochemistry of paraffin-embedded Human liver cancer tissue using TA351818 (TM7SF2 Antibody) at dilution 1/30 (Original magnification: ×200)



Immunohistochemistry of paraffin-embedded Human liver cancer tissue using TA351818 (TM7SF2 Antibody) at dilution 1/30, treated with synthetic peptide. (Original magnification:  $\times 200$ )