

## Product datasheet for **TA351817S**

### Tspan 13 (TSPAN13) Rabbit Polyclonal Antibody

#### Product data:

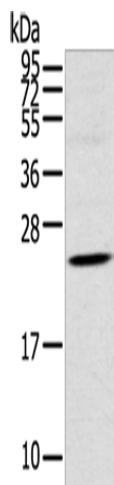
Product Type:	Primary Antibodies
Applications:	IHC, WB
Recommended Dilution:	WB: 200-1000 WB positive control: Human fetal brain tissue IHC: 25-100 Positive control: Human thyroid cancer Predicted cell location: Cytoplasm and Nucleus
Reactivity:	Human, Mouse, Rat
Host:	Rabbit
Isotype:	IgG
Clonality:	Polyclonal
Immunogen:	Synthetic peptide of human TSPAN13
Formulation:	pH7.4 PBS, 0.05% NaN <sub>3</sub> , 40% Glycerol
Purification:	Antigen affinity purification
Conjugation:	Unconjugated
Storage:	Store at -20°C as received.
Stability:	Stable for 12 months from date of receipt.
Predicted Protein Size:	22 kDa
Gene Name:	tetraspanin 13
Database Link:	<a href="#">NP_055214</a> <a href="#">Entrez Gene 66109 Mouse</a> <a href="#">Entrez Gene 366602 Rat</a> <a href="#">Entrez Gene 27075 Human</a> <a href="#">O95857</a>
Background:	The protein encoded by this gene is a member of the transmembrane 4 superfamily, also known as the tetraspanin family. Most of these members are cell-surface proteins that are characterized by the presence of four hydrophobic domains. The proteins mediate signal transduction events that play a role in the regulation of cell development, activation, growth and motility.
Synonyms:	NET-6; NET6; TM4SF13



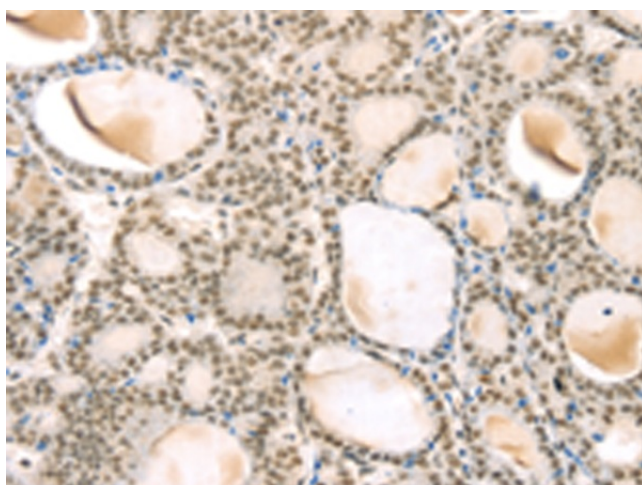
[View online »](#)

Protein Families: Druggable Genome, Transmembrane

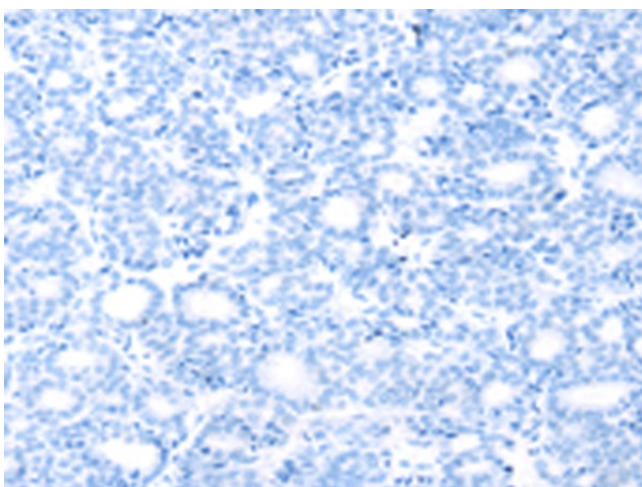
### Product images:



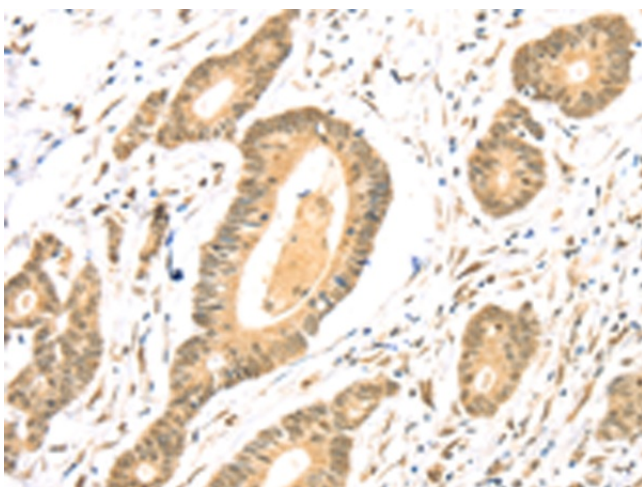
Gel: 12%SDS-PAGE  
Lysate: 40  $\mu$ g  
Lane: Human fetal brain tissue  
Primary antibody: [TA351817] (TSPAN13 Antibody) at dilution 1/550  
Secondary antibody: Goat anti rabbit IgG at 1/8000 dilution  
Exposure time: 2 minutes



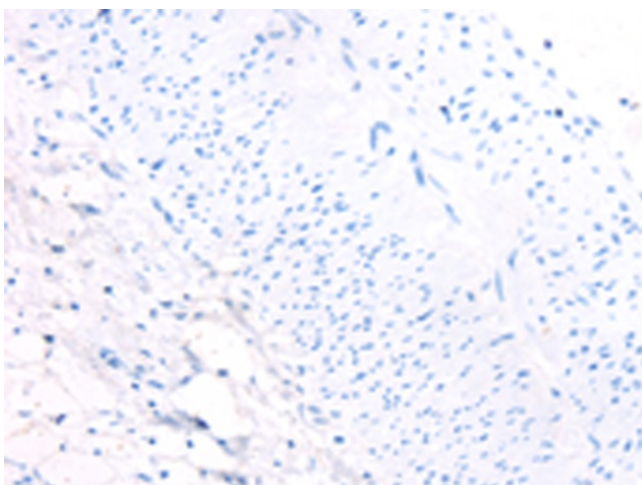
Immunohistochemistry of paraffin-embedded Human thyroid cancer tissue using [TA351817] (TSPAN13 Antibody) at dilution 1/35 (Original magnification:  $\times$ 200)



Immunohistochemistry of paraffin-embedded Human thyroid cancer tissue using [TA351817] (TSPAN13 Antibody) at dilution 1/35, treated with synthetic peptide. (Original magnification: ×200)



Immunohistochemistry of paraffin-embedded Human colon cancer tissue using [TA351817] (TSPAN13 Antibody) at dilution 1/35 (Original magnification: ×200)



Immunohistochemistry of paraffin-embedded Human colon cancer tissue using [TA351817] (TSPAN13 Antibody) at dilution 1/35, treated with synthetic peptide. (Original magnification: ×200)