

## Product datasheet for **TA351816**

### TIS11D (ZFP36L2) Rabbit Polyclonal Antibody

#### Product data:

Product Type:	Primary Antibodies
Applications:	IHC, WB
Recommended Dilution:	WB: 200-1000 WB positive control: NIH/3T3 cells IHC: 25-100 Positive control: Human liver cancer Predicted cell location: Cytoplasm and Cell membrane
Reactivity:	Human, Mouse
Host:	Rabbit
Isotype:	IgG
Clonality:	Polyclonal
Immunogen:	Synthetic peptide of human ZFP36L2
Formulation:	pH7.4 PBS, 0.05% NaN <sub>3</sub> , 40% Glycerol
Concentration:	lot specific
Purification:	Antigen affinity purification
Conjugation:	Unconjugated
Storage:	Store at -20°C as received.
Stability:	Stable for 12 months from date of receipt.
Predicted Protein Size:	51 kDa
Gene Name:	ZFP36 ring finger protein-like 2
Database Link:	<a href="#">NP_008818</a> <a href="#">Entrez Gene 12193 Mouse</a> <a href="#">Entrez Gene 678 Human</a> <a href="#">P47974</a>

**Background:** This gene is a member of the TIS11 family of early response genes. Family members are induced by various agonists such as the phorbol ester TPA and the polypeptide mitogen EGF. The encoded protein contains a distinguishing putative zinc finger domain with a repeating cys-his motif. This putative nuclear transcription factor most likely functions in regulating the response to growth factors.

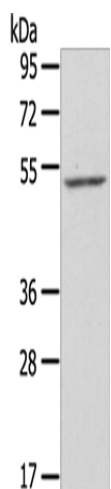


[View online »](#)

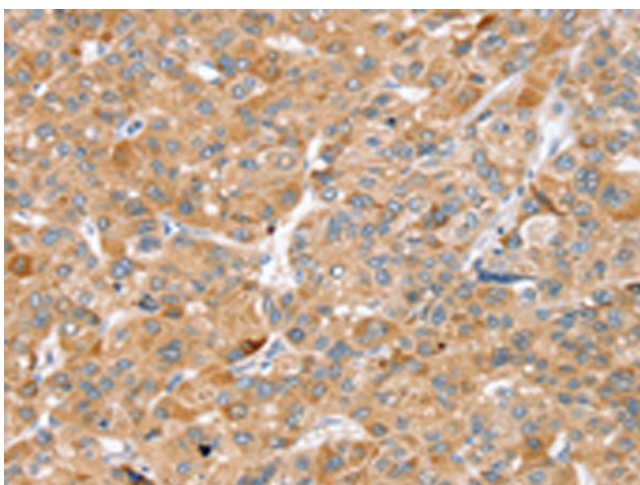
**Synonyms:** BRF2; ERF-2; ERF2; RNF162C; TIS11D

**Protein Families:** Transcription Factors

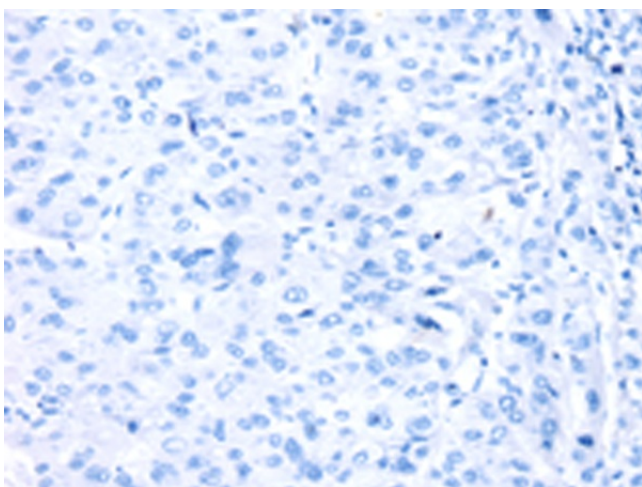
**Product images:**



Gel: 8%SDS-PAGE  
Lysate: 40  $\mu$ g  
Lane: NIH/3T3 cells  
Primary antibody: TA351816 (ZFP36L2 Antibody) at dilution 1/550  
Secondary antibody: Goat anti rabbit IgG at 1/8000 dilution  
Exposure time: 30 seconds



Immunohistochemistry of paraffin-embedded Human liver cancer tissue using TA351816 (ZFP36L2 Antibody) at dilution 1/45 (Original magnification:  $\times$ 200)



Immunohistochemistry of paraffin-embedded Human liver cancer tissue using TA351816 (ZFP36L2 Antibody) at dilution 1/45, treated with synthetic peptide. (Original magnification:  $\times 200$ )