

## Product datasheet for **TA351814S**

### TRIM62 Rabbit Polyclonal Antibody

#### Product data:

Product Type:	Primary Antibodies
Applications:	IHC, WB
Recommended Dilution:	WB: 500-2000 WB positive control: 231 and hepg2 cells IHC: 25-100 Positive control: Human liver cancer Predicted cell location: Cytoplasm
Reactivity:	Human
Host:	Rabbit
Isotype:	IgG
Clonality:	Polyclonal
Immunogen:	Synthetic peptide of human TRIM62
Formulation:	pH7.4 PBS, 0.05% NaN <sub>3</sub> , 40% Glycerol
Purification:	Antigen affinity purification
Conjugation:	Unconjugated
Storage:	Store at -20°C as received.
Stability:	Stable for 12 months from date of receipt.
Predicted Protein Size:	54 kDa
Gene Name:	tripartite motif containing 62
Database Link:	<a href="#">NP_060677</a> <a href="#">Entrez Gene 55223 Human</a> <a href="#">Q9BVG3</a>



[View online »](#)

**Background:**

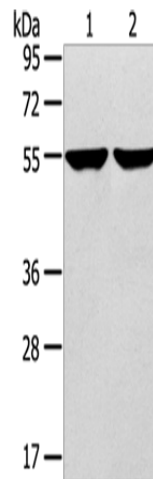
TRIM62 (tripartite motif-containing 62) is a 475 amino acid protein that belongs to the TRIM/RBCC (Ring finger, B box, coiled-coil) family. TRIM62 contains one B box-type zinc finger, one SPRY domain and one RING-type zinc finger; a motif that has zinc-chelating activity and is involved in mediating protein-protein and protein-DNA interactions. As a member of the TRIM/RBCC family, TRIM62 may function in transcriptional regulation, cell transformation and carcinogenesis. In addition, TRIM62 expression can affect the entry of murine leukemia virus (MLV) and human immunodeficiency virus 1 (HIV).

**Synonyms:**

DEAR1

**Protein Families:**

Druggable Genome

**Product images:**

Gel: 8%SDS-PAGE

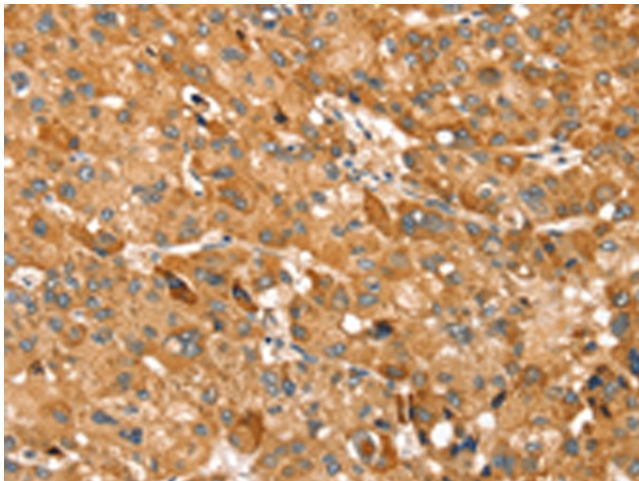
Lysate: 40 µg

Lane 1-2: 231 cells  
hepg2 cells

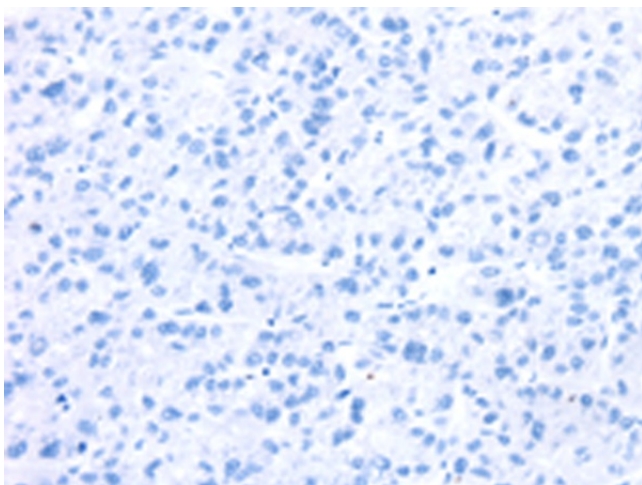
Primary antibody: [TA351814] (TRIM62 Antibody)  
at dilution 1/400

Secondary antibody: Goat anti rabbit IgG at  
1/8000 dilution

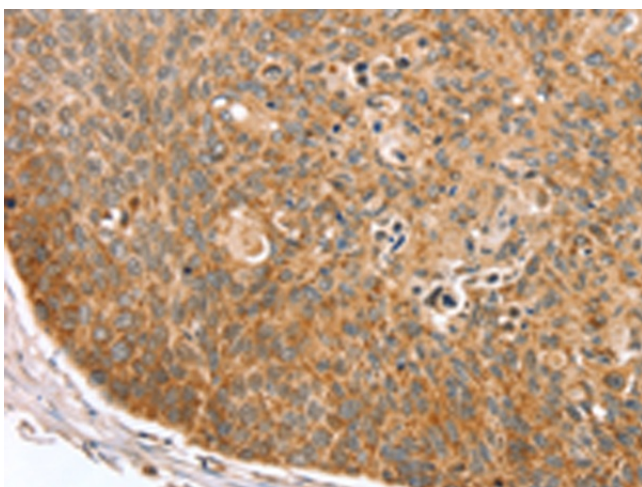
Exposure time: 1 minute



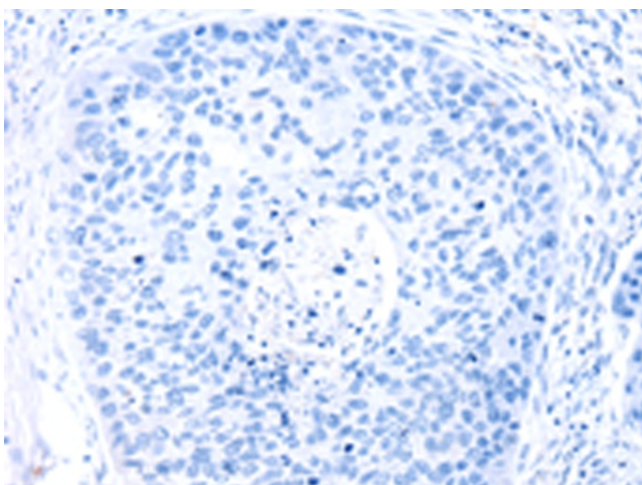
Immunohistochemistry of paraffin-embedded  
Human liver cancer tissue using [TA351814]  
(TRIM62 Antibody) at dilution 1/30 (Original  
magnification: ×200)



Immunohistochemistry of paraffin-embedded Human liver cancer tissue using [TA351814] (TRIM62 Antibody) at dilution 1/30, treated with synthetic peptide. (Original magnification: ×200)



Immunohistochemistry of paraffin-embedded Human esophagus cancer tissue using [TA351814] (TRIM62 Antibody) at dilution 1/30 (Original magnification: ×200)



Immunohistochemistry of paraffin-embedded Human esophagus cancer tissue using [TA351814] (TRIM62 Antibody) at dilution 1/30, treated with synthetic peptide. (Original magnification: ×200)