

Product datasheet for **TA351814**

TRIM62 Rabbit Polyclonal Antibody

Product data:

Product Type:	Primary Antibodies
Applications:	IHC, WB
Recommended Dilution:	WB: 500-2000 WB positive control: 231 and hepg2 cells IHC: 25-100 Positive control: Human liver cancer Predicted cell location: Cytoplasm
Reactivity:	Human
Host:	Rabbit
Isotype:	IgG
Clonality:	Polyclonal
Immunogen:	Synthetic peptide of human TRIM62
Formulation:	pH7.4 PBS, 0.05% NaN ₃ , 40% Glycerol
Concentration:	lot specific
Purification:	Antigen affinity purification
Conjugation:	Unconjugated
Storage:	Store at -20°C as received.
Stability:	Stable for 12 months from date of receipt.
Predicted Protein Size:	54 kDa
Gene Name:	tripartite motif containing 62
Database Link:	NP_060677 Entrez Gene 55223 Human Q9BVG3



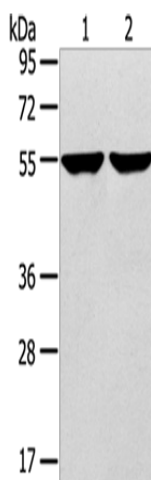
[View online »](#)

Background: TRIM62 (tripartite motif-containing 62) is a 475 amino acid protein that belongs to the TRIM/RBCC (Ring finger, B box, coiled-coil) family. TRIM62 contains one B box-type zinc finger, one SPRY domain and one RING-type zinc finger; a motif that has zinc-chelating activity and is involved in mediating protein-protein and protein-DNA interactions. As a member of the TRIM/RBCC family, TRIM62 may function in transcriptional regulation, cell transformation and carcinogenesis. In addition, TRIM62 expression can affect the entry of murine leukemia virus (MLV) and human immunodeficiency virus 1 (HIV).

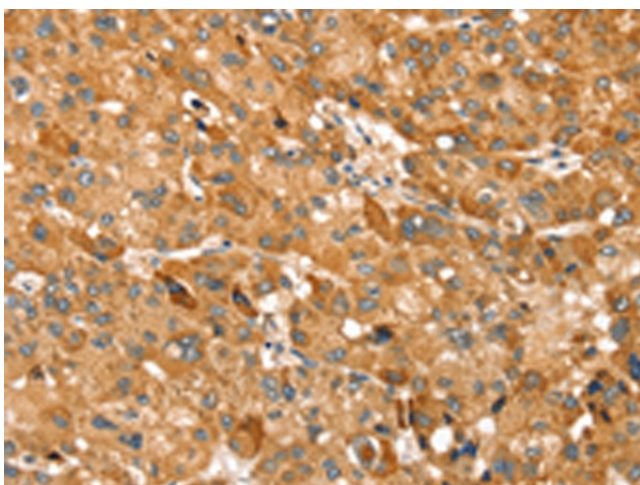
Synonyms: DEAR1

Protein Families: Druggable Genome

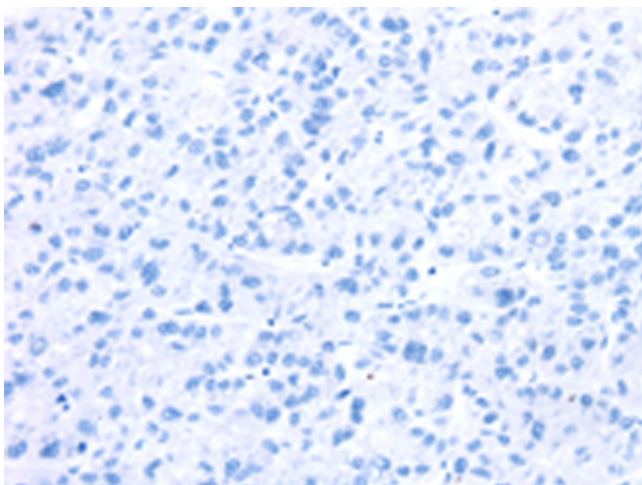
Product images:



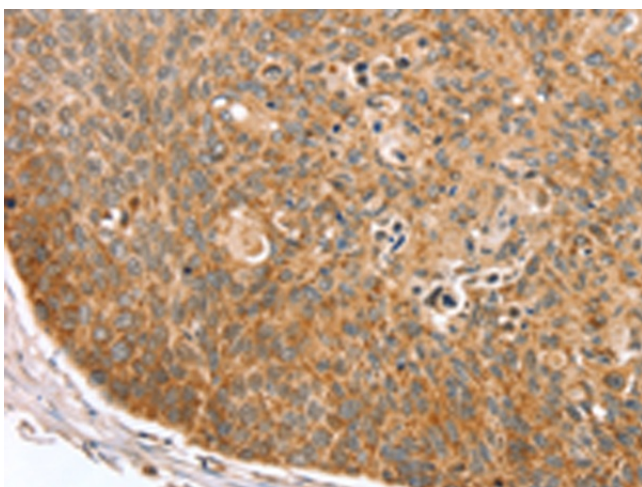
Gel: 8%SDS-PAGE
Lysate: 40 µg
Lane 1-2: 231 cells
hepg2 cells
Primary antibody: TA351814 (TRIM62 Antibody)
at dilution 1/400
Secondary antibody: Goat anti rabbit IgG at
1/8000 dilution
Exposure time: 1 minute



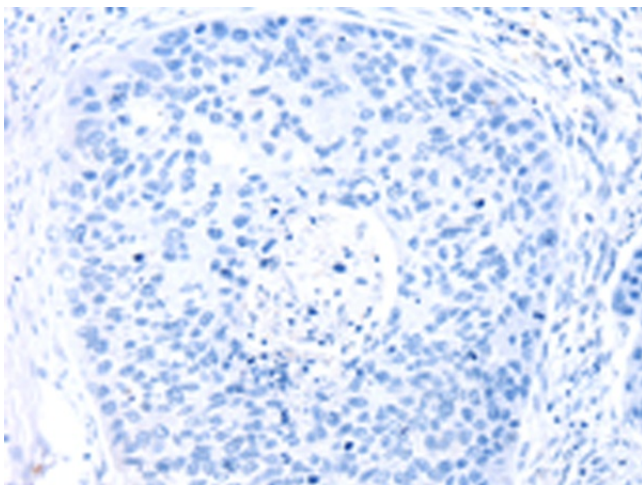
Immunohistochemistry of paraffin-embedded
Human liver cancer tissue using TA351814
(TRIM62 Antibody) at dilution 1/30 (Original
magnification: ×200)



Immunohistochemistry of paraffin-embedded Human liver cancer tissue using TA351814 (TRIM62 Antibody) at dilution 1/30, treated with synthetic peptide. (Original magnification: $\times 200$)



Immunohistochemistry of paraffin-embedded Human esophagus cancer tissue using TA351814 (TRIM62 Antibody) at dilution 1/30 (Original magnification: $\times 200$)



Immunohistochemistry of paraffin-embedded Human esophagus cancer tissue using TA351814 (TRIM62 Antibody) at dilution 1/30, treated with synthetic peptide. (Original magnification: $\times 200$)