

Product datasheet for **TA351812**

TRIM35 Rabbit Polyclonal Antibody

Product data:

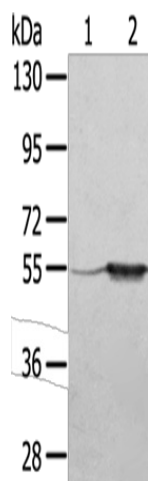
Product Type:	Primary Antibodies
Applications:	IHC, WB
Recommended Dilution:	WB: 200-1000 WB positive control: A375 cells and human fetal muscle tissue IHC: 25-100 Positive control: Human breast cancer Predicted cell location: Nucleus and Cytoplasm
Reactivity:	Human
Host:	Rabbit
Isotype:	IgG
Clonality:	Polyclonal
Immunogen:	Synthetic peptide of human TRIM35
Formulation:	pH7.4 PBS, 0.05% NaN ₃ , 40% Glycerol
Concentration:	lot specific
Purification:	Antigen affinity purification
Conjugation:	Unconjugated
Storage:	Store at -20°C as received.
Stability:	Stable for 12 months from date of receipt.
Predicted Protein Size:	57 kDa
Gene Name:	tripartite motif containing 35
Database Link:	NP_741983 Entrez Gene 23087 Human Q9UPQ4
Background:	The protein encoded by this gene is a member of the tripartite motif (TRIM) family. The TRIM motif includes three zinc-binding domains, a RING, a B-box type 1 and a B-box type 2, and a coiled-coil region. The function of this protein has not been identified.
Synonyms:	HLS5; MAIR



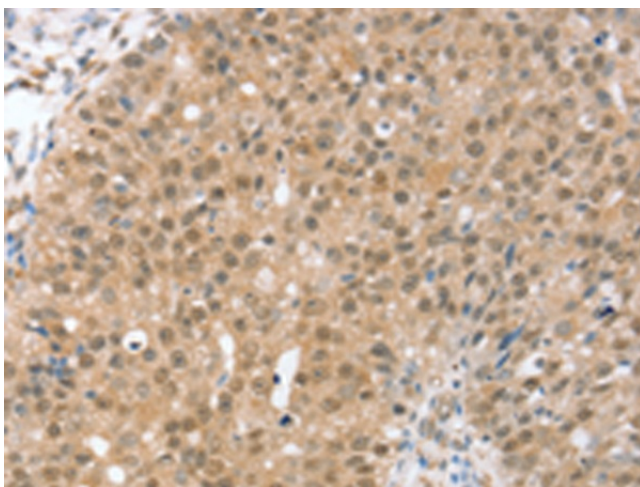
[View online »](#)

Protein Families: Druggable Genome

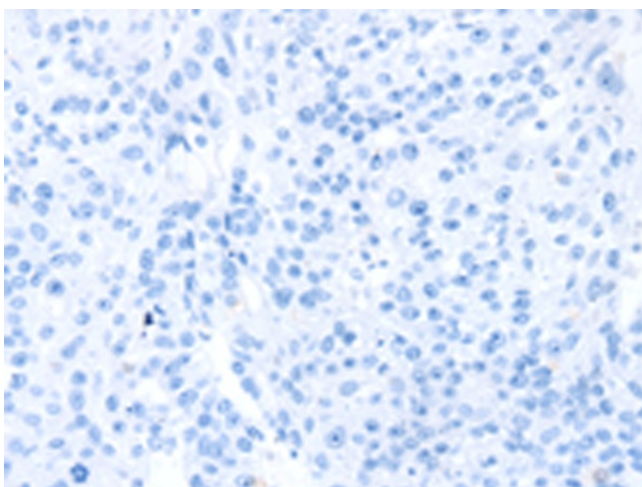
Product images:



Gel: 8%SDS-PAGE
Lysate: 40 μ g
Lane 1-2: A375 cells
human fetal muscle tissue
Primary antibody: TA351812 (TRIM35 Antibody)
at dilution 1/550
Secondary antibody: Goat anti rabbit IgG at
1/8000 dilution
Exposure time: 5 seconds



Immunohistochemistry of paraffin-embedded
Human breast cancer tissue using TA351812
(TRIM35 Antibody) at dilution 1/35 (Original
magnification: \times 200)



Immunohistochemistry of paraffin-embedded Human breast cancer tissue using TA351812 (TRIM35 Antibody) at dilution 1/35, treated with synthetic peptide. (Original magnification: $\times 200$)