

Product datasheet for **TA351809**

TRIM22 Rabbit Polyclonal Antibody

Product data:

Product Type:	Primary Antibodies
Applications:	IHC, WB
Recommended Dilution:	WB: 200-1000 WB positive control: A172 cells IHC: 25-100 Positive control: Human ovarian cancer Predicted cell location: Cytoplasm and Nucleus
Reactivity:	Human
Host:	Rabbit
Isotype:	IgG
Clonality:	Polyclonal
Immunogen:	Synthetic peptide of human TRIM22
Formulation:	pH7.4 PBS, 0.05% NaN ₃ , 40% Glycerol
Concentration:	lot specific
Purification:	Antigen affinity purification
Conjugation:	Unconjugated
Storage:	Store at -20°C as received.
Stability:	Stable for 12 months from date of receipt.
Predicted Protein Size:	57 kDa
Gene Name:	tripartite motif containing 22
Database Link:	NP_006065 Entrez Gene 10346 Human Q8IYM9
Background:	The protein encoded by this gene is a member of the tripartite motif (TRIM) family. The TRIM motif includes three zinc-binding domains, a RING, a B-box type 1 and a B-box type 2, and a coiled-coil region. This protein localizes to the cytoplasm and its expression is induced by interferon. The protein down-regulates transcription from the HIV-1 LTR promoter region, suggesting that function of this protein may be to mediate interferon's antiviral effects.

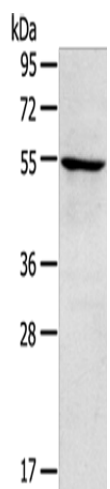


[View online »](#)

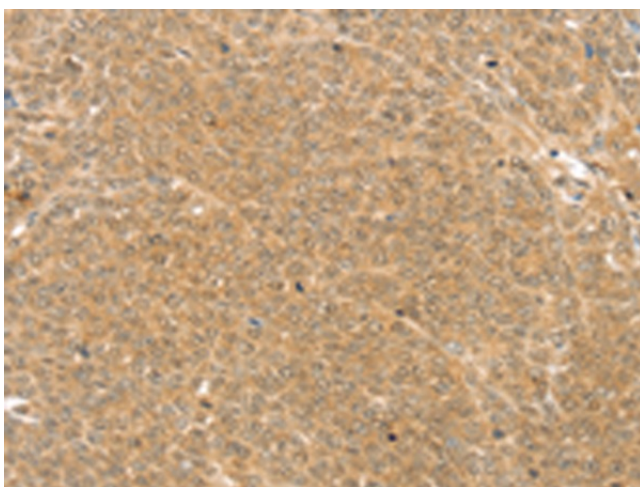
Synonyms: GPSTAF50; RNF94; STAF50

Protein Families: Druggable Genome, Transcription Factors

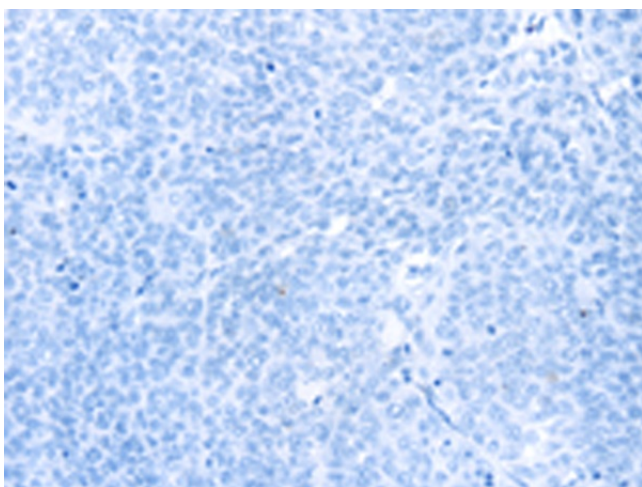
Product images:



Gel: 8%SDS-PAGE
Lysate: 40 μ g
Lane: A172 cells
Primary antibody: TA351809 (TRIM22 Antibody)
at dilution 1/250
Secondary antibody: Goat anti rabbit IgG at
1/8000 dilution
Exposure time: 3 minutes



Immunohistochemistry of paraffin-embedded
Human ovarian cancer tissue using TA351809
(TRIM22 Antibody) at dilution 1/25 (Original
magnification: \times 200)



Immunohistochemistry of paraffin-embedded Human ovarian cancer tissue using TA351809 (TRIM22 Antibody) at dilution 1/25, treated with synthetic peptide. (Original magnification: ×200)