

## Product datasheet for **TA351807S**

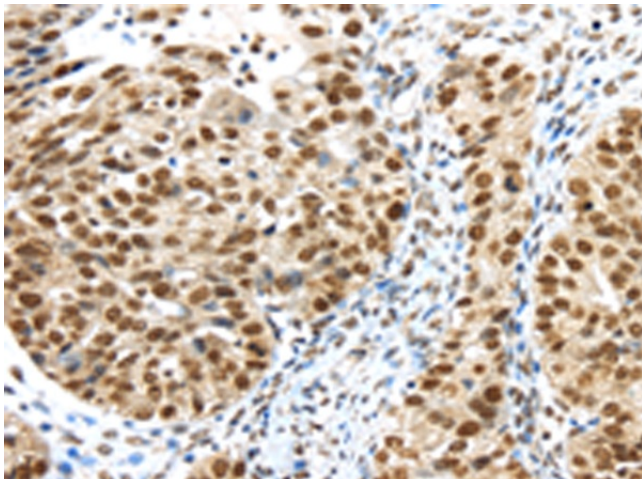
### TIF1 gamma (TRIM33) Rabbit Polyclonal Antibody

#### Product data:

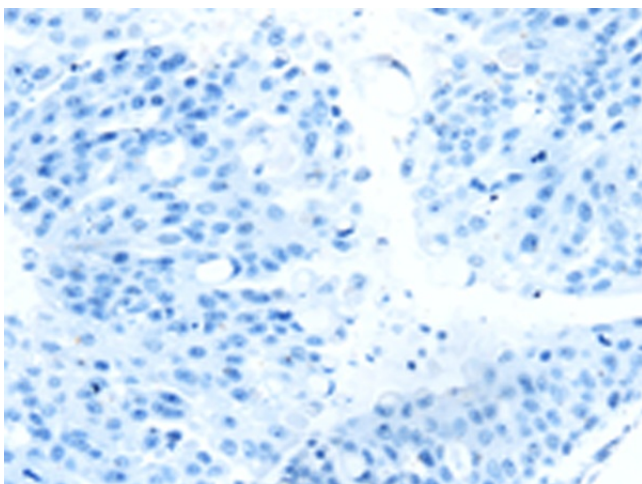
|                       |   |
|-----------------------|---|
| Product Type:         | Primary Antibodies  |
| Applications:         | IHC   |
| Recommended Dilution: | IHC: 30-150<br>Positive control: Human breast cancer<br>Predicted cell location: Nucleus  |
| Reactivity:           | Human, Mouse  |
| Host:                 | Rabbit  |
| Isotype:              | IgG   |
| Clonality:            | Polyclonal  |
| Immunogen:            | Synthetic peptide of human TRIM33   |
| Formulation:          | pH7.4 PBS, 0.05% NaN <sub>3</sub> , 40% Glycerol  |
| Purification:         | Antigen affinity purification   |
| Conjugation:          | Unconjugated  |
| Storage:              | Store at -20°C as received.   |
| Stability:            | Stable for 12 months from date of receipt.  |
| Gene Name:            | tripartite motif containing 33  |
| Database Link:        | <a href="#">NP_148980</a><br><a href="#">Entrez Gene 94093 Mouse</a> <a href="#">Entrez Gene 51592 Human</a><br><a href="#">Q9UPN9</a>  |
| Background:           | The protein encoded by this gene is thought to be a transcriptional corepressor. However, molecules that interact with this protein have not yet been identified. The protein is a member of the tripartite motif family. This motif includes three zinc-binding domains, a RING, a B-box type 1 and a B-box type 2, and a coiled-coil region. Three alternatively spliced transcript variants for this gene have been described, however, the full-length nature of one variant has not been determined. |
| Synonyms:             | ECTO; PTC7; RFG7; TF1G; TIF1G; TIF1GAMMA; TIFGAMMA  |
| Protein Families:     | Druggable Genome, ES Cell Differentiation/IPS, Protein Kinase, Transcription Factors  |



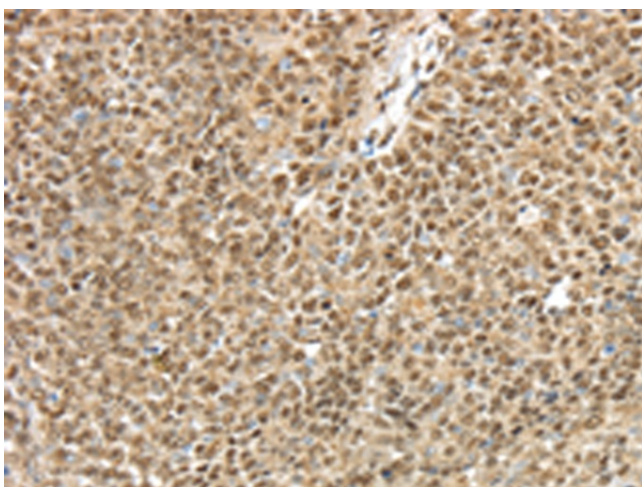
[View online »](#)

**Product images:**

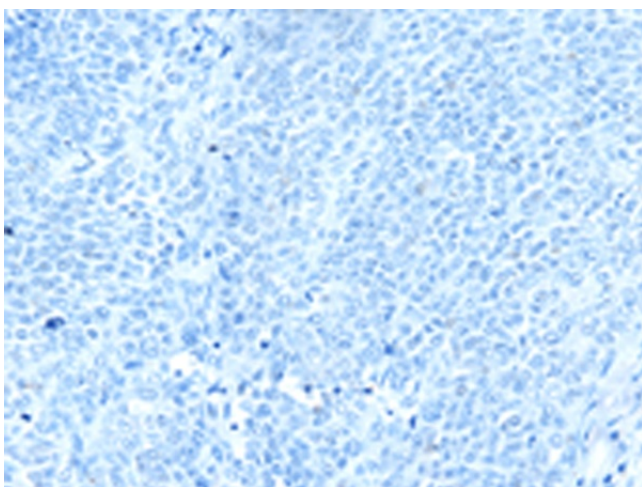
Immunohistochemistry of paraffin-embedded Human breast cancer tissue using [TA351807] (TRIM33 Antibody) at dilution 1/40 (Original magnification:  $\times 200$ )



Immunohistochemistry of paraffin-embedded Human breast cancer tissue using [TA351807] (TRIM33 Antibody) at dilution 1/40, treated with synthetic peptide. (Original magnification:  $\times 200$ )



Immunohistochemistry of paraffin-embedded Human ovarian cancer tissue using [TA351807] (TRIM33 Antibody) at dilution 1/40 (Original magnification:  $\times 200$ )



Immunohistochemistry of paraffin-embedded Human ovarian cancer tissue using [TA351807] (TRIM33 Antibody) at dilution 1/40, treated with synthetic peptide. (Original magnification:  $\times 200$ )