

Product datasheet for **TA351806**

NME2 Rabbit Polyclonal Antibody

Product data:

Product Type:	Primary Antibodies
Applications:	IHC, WB
Recommended Dilution:	WB: 1000-5000 WB positive control: Hela, NIH/3T3, LNCap and 293T cells, Mouse brain tissue, A549 and Jurkat cells IHC: 30-150 Positive control: Human prostate cancer Predicted cell location: Cytoplasm
Reactivity:	Human, Mouse, Rat
Host:	Rabbit
Isotype:	IgG
Clonality:	Polyclonal
Immunogen:	Synthetic peptide of human NME2
Formulation:	pH7.4 PBS, 0.05% NaN ₃ , 40% Glycerol
Concentration:	lot specific
Purification:	Antigen affinity purification
Conjugation:	Unconjugated
Storage:	Store at -20°C as received.
Stability:	Stable for 12 months from date of receipt.
Predicted Protein Size:	17 kDa
Gene Name:	NME/NM23 nucleoside diphosphate kinase 2
Database Link:	NP_002503 Entrez Gene 18103 Mouse Entrez Gene 83782 Rat Entrez Gene 4831 Human P22392



[View online »](#)

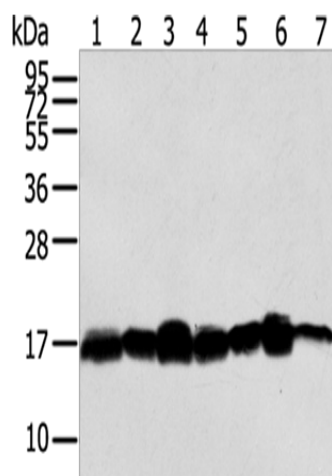
Background: Nucleoside diphosphate kinase (NDK) exists as a hexamer composed of 'A' (encoded by NME1) and 'B' (encoded by this gene) isoforms. Multiple alternatively spliced transcript variants have been found for this gene. Read-through transcription from the neighboring upstream gene (NME1) generates naturally-occurring transcripts (NME1-NME2) that encode a fusion protein comprised of sequence sharing identity with each individual gene product.

Synonyms: NDKB; NDPK-B; NDPKB; NM23-H2; NM23B; PUF

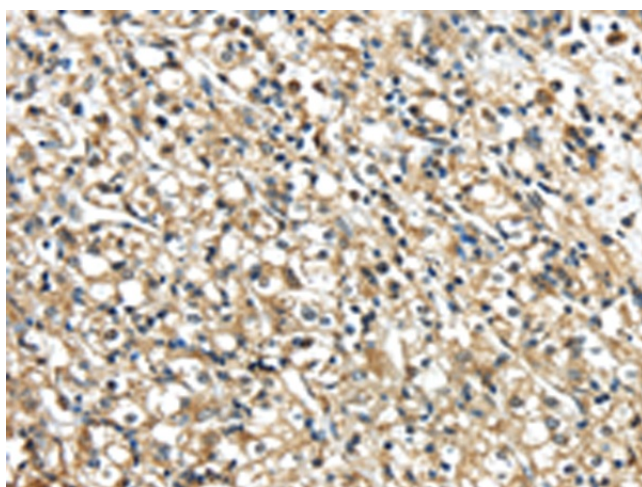
Protein Families: Druggable Genome, Transcription Factors

Protein Pathways: Metabolic pathways, Purine metabolism, Pyrimidine metabolism

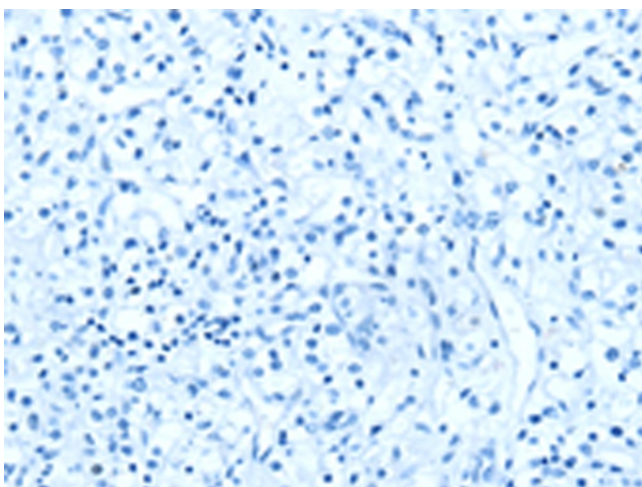
Product images:



Gel: 12%SDS-PAGE
 Lysate: 40 µg
 Lane 1-7: HeLa cells
 NIH/3T3 cells
 LNCap cells
 293T cells
 Mouse brain tissue
 A549 cells
 Jurkat cells
 Primary antibody: TA351806 (NME2 Antibody) at dilution 1/300
 Secondary antibody: Goat anti rabbit IgG at 1/8000 dilution
 Exposure time: 30 seconds



Immunohistochemistry of paraffin-embedded Human prostate cancer tissue using TA351806 (NME2 Antibody) at dilution 1/40 (Original magnification: ×200)



Immunohistochemistry of paraffin-embedded Human prostate cancer tissue using TA351806 (NME2 Antibody) at dilution 1/40, treated with synthetic peptide. (Original magnification: $\times 200$)