

Product datasheet for **TA351805S**

TIF1 alpha (TRIM24) Rabbit Polyclonal Antibody

Product data:

Product Type:	Primary Antibodies
Applications:	IHC, WB
Recommended Dilution:	WB: 500-2000 WB positive control: 293T, 231 and lo2 cell IHC: 30-150 Positive control: Human breast cancer Predicted cell location: Nucleus and Cytoplasm
Reactivity:	Human, Mouse
Host:	Rabbit
Isotype:	IgG
Clonality:	Polyclonal
Immunogen:	Synthetic peptide of human TRIM24
Formulation:	pH7.4 PBS, 0.05% NaN ₃ , 40% Glycerol
Purification:	Antigen affinity purification
Conjugation:	Unconjugated
Storage:	Store at -20°C as received.
Stability:	Stable for 12 months from date of receipt.
Predicted Protein Size:	117/113 kDa
Gene Name:	tripartite motif containing 24
Database Link:	NP_003843 Entrez Gene 21848 Mouse Entrez Gene 8805 Human O15164

Background: The protein encoded by this gene mediates transcriptional control by interaction with the activation function 2 (AF2) region of several nuclear receptors, including the estrogen, retinoic acid, and vitamin D3 receptors. The protein localizes to nuclear bodies and is thought to associate with chromatin and heterochromatin-associated factors. The protein is a member of the tripartite motif (TRIM) family. The TRIM motif includes three zinc-binding domains - a RING, a B-box type 1 and a B-box type 2 - and a coiled-coil region.

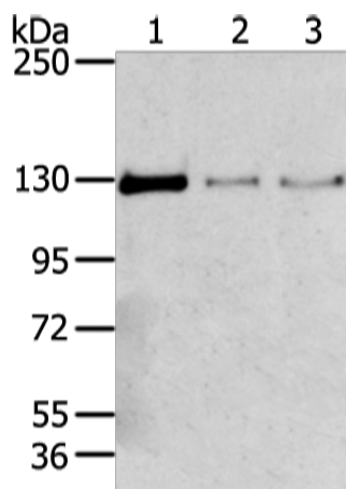


[View online »](#)

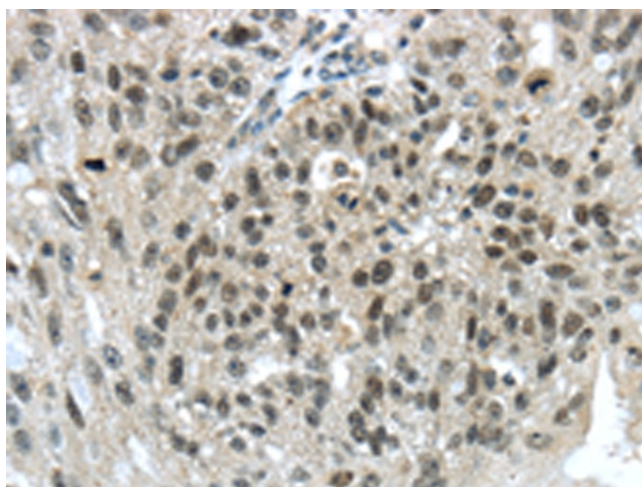
Synonyms: hTIF1; PTC6; RNF82; TF1A; TIF1; TIF1A; TIF1ALPHA

Protein Families: Druggable Genome, Protein Kinase, Transcription Factors

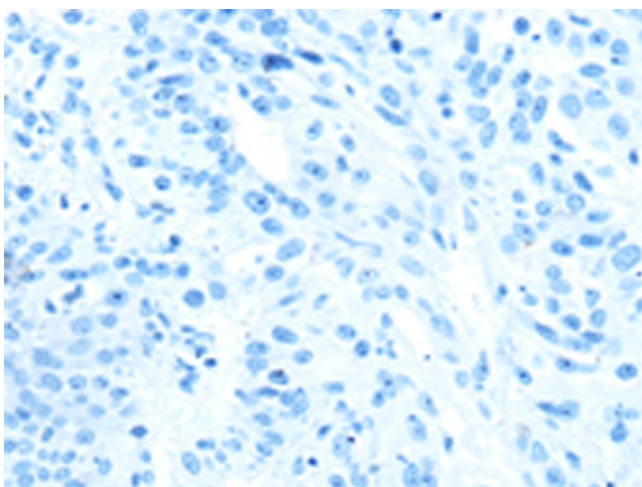
Product images:



Gel: 6%SDS-PAGE
 Lysate: 80 µg
 Lane 1-3: 293T
 231 and lo2 cell
 Primary antibody: [TA351805] (TRIM24 Antibody)
 at dilution 1/400
 Secondary antibody: Goat anti rabbit IgG at
 1/8000 dilution
 Exposure time: 1 minute



Immunohistochemistry of paraffin-embedded
 Human breast cancer tissue using [TA351805]
 (TRIM24 Antibody) at dilution 1/40 (Original
 magnification: ×200)



Immunohistochemistry of paraffin-embedded Human breast cancer tissue using [TA351805] (TRIM24 Antibody) at dilution 1/40, treated with synthetic peptide. (Original magnification: $\times 200$)