

Product datasheet for **TA351804S**

ISM2 Rabbit Polyclonal Antibody

Product data:

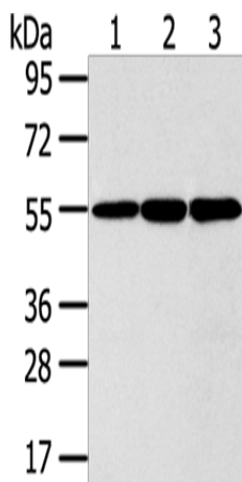
| | |
|-------------------------|---|
| Product Type: | Primary Antibodies |
| Applications: | IHC, WB |
| Recommended Dilution: | WB: 1000-5000 WB positive control: 293T, LO2 and Lovo cells IHC: 30-150 Positive control: Human breast cancer Predicted cell location: Secreted |
| Reactivity: | Human |
| Host: | Rabbit |
| Isotype: | IgG |
| Clonality: | Polyclonal |
| Immunogen: | Synthetic peptide of human ISM2 |
| Formulation: | pH7.4 PBS, 0.05% NaN ₃ , 40% Glycerol |
| Purification: | Antigen affinity purification |
| Conjugation: | Unconjugated |
| Storage: | Store at -20°C as received. |
| Stability: | Stable for 12 months from date of receipt. |
| Predicted Protein Size: | 64 kDa |
| Gene Name: | isthmin 2 |
| Database Link: | NP_872315 Entrez Gene 145501 Human Q6H9L7 |

Background: The protein encoded by this gene contains a type 1 thrombospondin domain, which is present in thrombospondin, a number of proteins involved in the complement pathway, as well as in extracellular matrix proteins. Two alternatively spliced transcript variants encoding distinct isoforms have been observed.

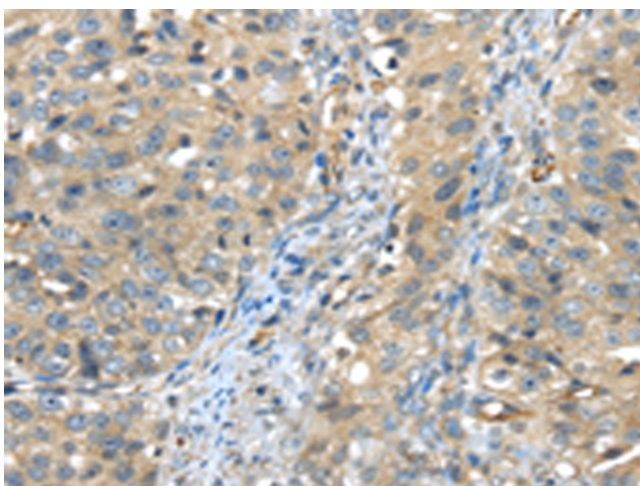
Synonyms: TAIL1; THSD3

Protein Families: Transmembrane

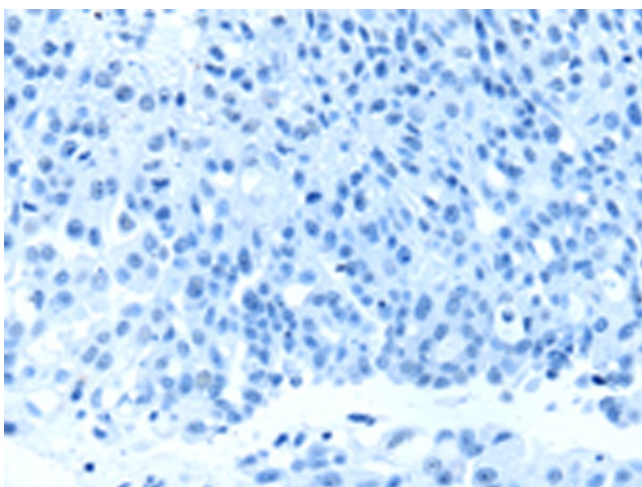
[View online »](#)

Product images:


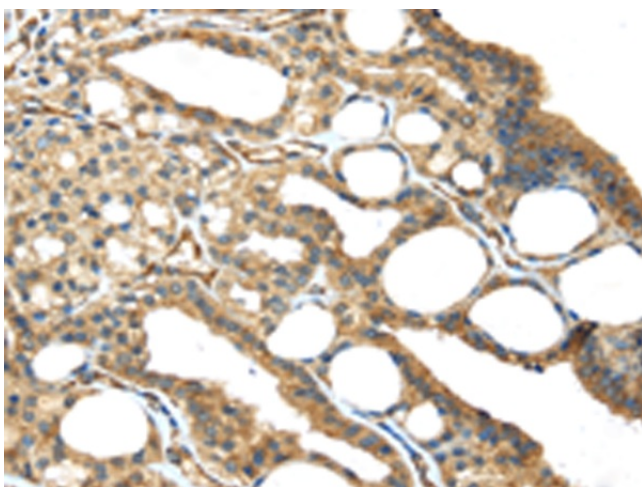
Gel: 8%SDS-PAGE
 Lysate: 40 µg
 Lane 1-3: 293T cells
 LO2 cells
 Lovo cells
 Primary antibody: [TA351804] (ISM2 Antibody) at dilution 1/300
 Secondary antibody: Goat anti rabbit IgG at 1/8000 dilution
 Exposure time: 5 seconds



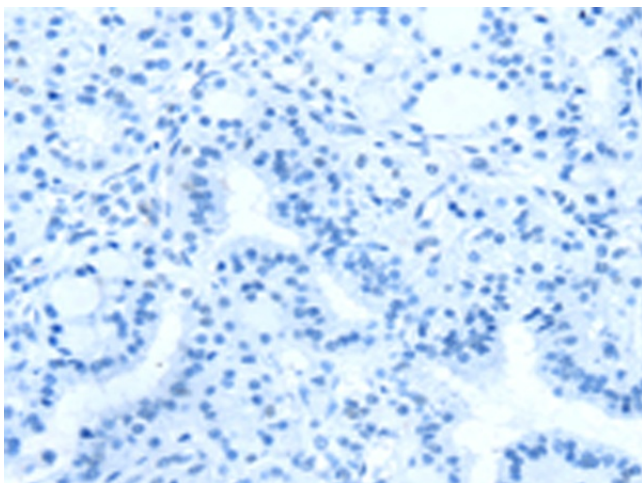
Immunohistochemistry of paraffin-embedded Human breast cancer tissue using [TA351804] (ISM2 Antibody) at dilution 1/45 (Original magnification: ×200)



Immunohistochemistry of paraffin-embedded Human breast cancer tissue using [TA351804] (ISM2 Antibody) at dilution 1/45, treated with synthetic peptide. (Original magnification: ×200)



Immunohistochemistry of paraffin-embedded Human thyroid cancer tissue using [TA351804] (ISM2 Antibody) at dilution 1/45 (Original magnification: ×200)



Immunohistochemistry of paraffin-embedded Human thyroid cancer tissue using [TA351804] (ISM2 Antibody) at dilution 1/45, treated with synthetic peptide. (Original magnification: ×200)