

Product datasheet for **TA351804**

ISM2 Rabbit Polyclonal Antibody

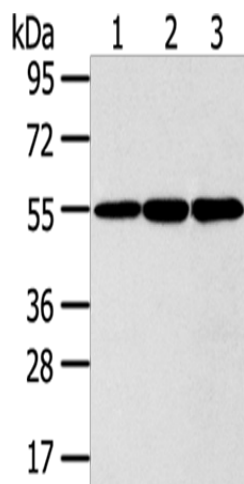
Product data:

Product Type:	Primary Antibodies
Applications:	IHC, WB
Recommended Dilution:	WB: 1000-5000 WB positive control: 293T, LO2 and Lovo cells IHC: 30-150 Positive control: Human breast cancer Predicted cell location: Secreted
Reactivity:	Human
Host:	Rabbit
Isotype:	IgG
Clonality:	Polyclonal
Immunogen:	Synthetic peptide of human ISM2
Formulation:	pH7.4 PBS, 0.05% NaN ₃ , 40% Glycerol
Concentration:	lot specific
Purification:	Antigen affinity purification
Conjugation:	Unconjugated
Storage:	Store at -20°C as received.
Stability:	Stable for 12 months from date of receipt.
Predicted Protein Size:	64 kDa
Gene Name:	isthmin 2
Database Link:	NP_872315 Entrez Gene 145501 Human Q6H9L7
Background:	The protein encoded by this gene contains a type 1 thrombospondin domain, which is present in thrombospondin, a number of proteins involved in the complement pathway, as well as in extracellular matrix proteins. Two alternatively spliced transcript variants encoding distinct isoforms have been observed.
Synonyms:	TAIL1; THSD3

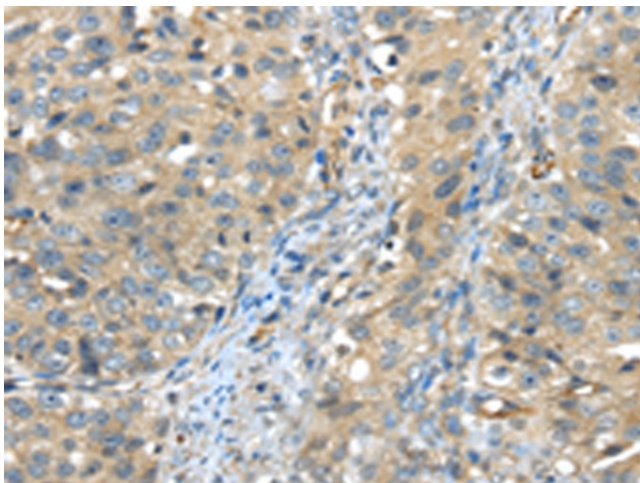
[View online »](#)

Protein Families: Transmembrane

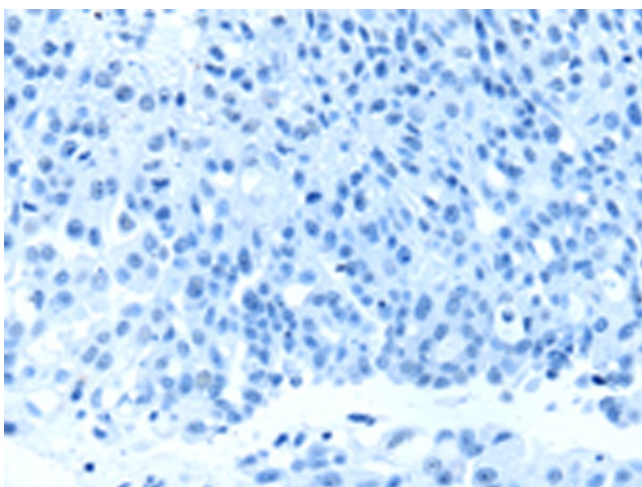
Product images:



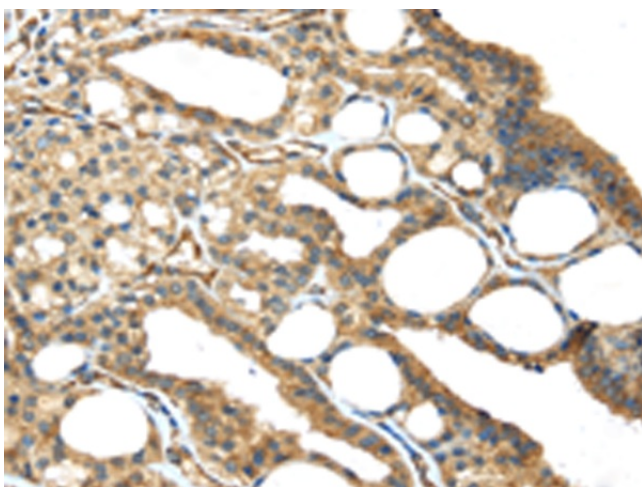
Gel: 8%SDS-PAGE
 Lysate: 40 µg
 Lane 1-3: 293T cells
 LO2 cells
 Lovo cells
 Primary antibody: TA351804 (ISM2 Antibody) at dilution 1/300
 Secondary antibody: Goat anti rabbit IgG at 1/8000 dilution
 Exposure time: 5 seconds



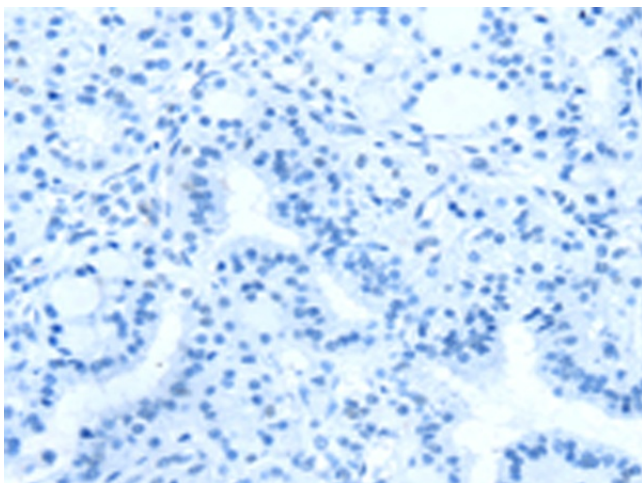
Immunohistochemistry of paraffin-embedded Human breast cancer tissue using TA351804 (ISM2 Antibody) at dilution 1/45 (Original magnification: ×200)



Immunohistochemistry of paraffin-embedded Human breast cancer tissue using TA351804 (ISM2 Antibody) at dilution 1/45, treated with synthetic peptide. (Original magnification: ×200)



Immunohistochemistry of paraffin-embedded Human thyroid cancer tissue using TA351804 (ISM2 Antibody) at dilution 1/45 (Original magnification: ×200)



Immunohistochemistry of paraffin-embedded Human thyroid cancer tissue using TA351804 (ISM2 Antibody) at dilution 1/45, treated with synthetic peptide. (Original magnification: ×200)