

Product datasheet for **TA351803**

Thrombospondin 2 (THBS2) Rabbit Polyclonal Antibody

Product data:

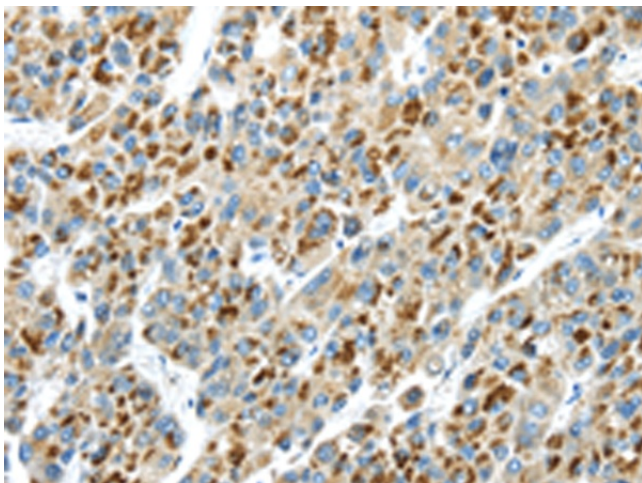
Product Type:	Primary Antibodies
Applications:	IHC
Recommended Dilution:	IHC: 25-100 Positive control: Human liver cancer Predicted cell location: Cytoplasm
Reactivity:	Human, Mouse
Host:	Rabbit
Isotype:	IgG
Clonality:	Polyclonal
Immunogen:	Synthetic peptide of human THBS2
Formulation:	pH7.4 PBS, 0.05% NaN ₃ , 40% Glycerol
Concentration:	lot specific
Purification:	Antigen affinity purification
Conjugation:	Unconjugated
Storage:	Store at -20°C as received.
Stability:	Stable for 12 months from date of receipt.
Gene Name:	thrombospondin 2
Database Link:	NP_003238 Entrez Gene 7058 Human P35442
Background:	The protein encoded by this gene belongs to the thrombospondin family. It is a disulfide-linked homotrimeric glycoprotein that mediates cell-to-cell and cell-to-matrix interactions. This protein has been shown to function as a potent inhibitor of tumor growth and angiogenesis. Studies of the mouse counterpart suggest that this protein may modulate the cell surface properties of mesenchymal cells and be involved in cell adhesion and migration.
Synonyms:	TSP2
Protein Families:	Druggable Genome



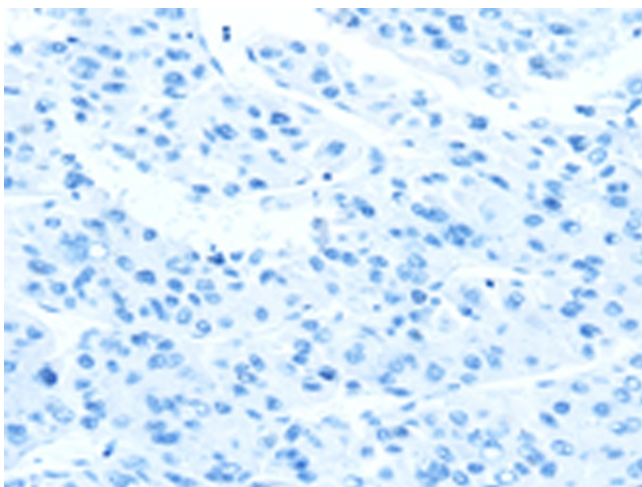
[View online »](#)

Protein Pathways: ECM-receptor interaction, Focal adhesion, TGF-beta signaling pathway

Product images:



Immunohistochemistry of paraffin-embedded Human liver cancer tissue using TA351803 (THBS2 Antibody) at dilution 1/30 (Original magnification: $\times 200$)



Immunohistochemistry of paraffin-embedded Human liver cancer tissue using TA351803 (THBS2 Antibody) at dilution 1/30, treated with synthetic peptide. (Original magnification: $\times 200$)