

Product datasheet for **TA351793**

ELOA2 Rabbit Polyclonal Antibody

Product data:

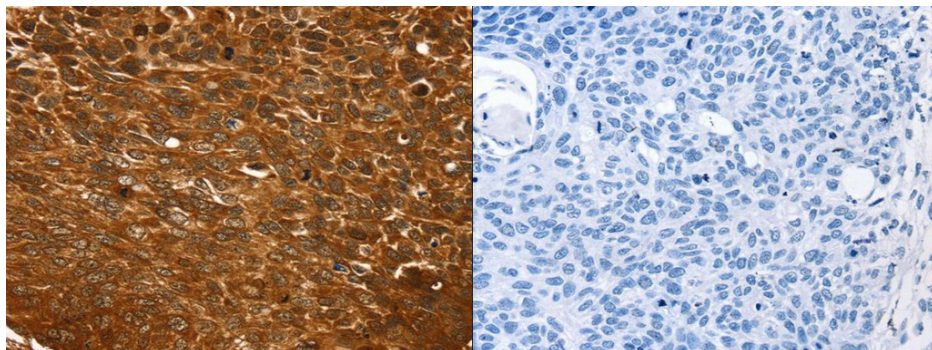
Product Type:	Primary Antibodies
Applications:	IHC
Recommended Dilution:	IHC: 50-100 Positive control: Human liver cancer Predicted cell location: Nucleus
Reactivity:	Human
Host:	Rabbit
Isotype:	IgG
Clonality:	Polyclonal
Immunogen:	Synthetic peptide of human TCEB3B
Formulation:	pH7.4 PBS, 0.05% NaN ₃ , 40% Glycerol
Concentration:	lot specific
Purification:	Antigen affinity purification
Conjugation:	Unconjugated
Storage:	Store at -20°C as received.
Stability:	Stable for 12 months from date of receipt.
Gene Name:	transcription elongation factor B subunit 3B
Database Link:	NP_057511 Entrez Gene 51224 Human Q8IYF1
Background:	This gene encodes the transcriptionally active subunit of the SIII (or elongin) transcription elongation factor complex, which also includes two regulatory subunits, elongins B and C. This complex acts to increase the rate of RNA chain elongation by RNA polymerase II by suppressing transient pausing of the polymerase at many sites along the DNA template. Whereas a related protein with similar function, elongin A, is ubiquitously expressed, the encoded protein is specifically expressed in the testis, suggesting it may have a role in spermatogenesis.
Synonyms:	ELOA2; HsT832; TCEB3L



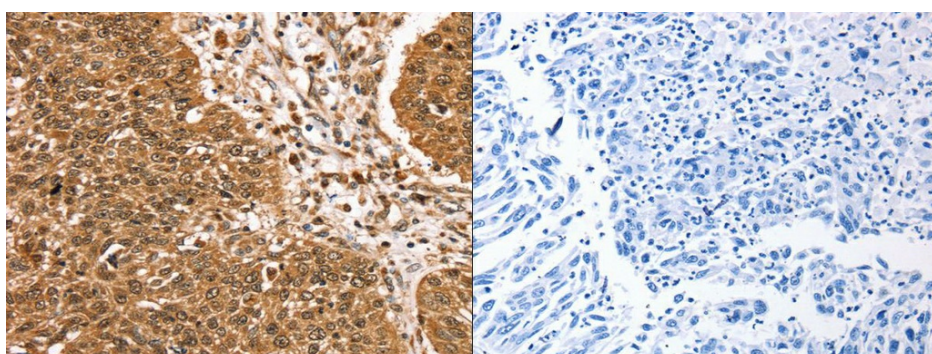
[View online »](#)

Protein Families: Transcription Factors

Product images:



The image on the left is immunohistochemistry of paraffin-embedded Human esophagus cancer tissue using (TCEB3B Antibody) at dilution 1/25, on the right is treated with synthetic peptide. (Original magnification: $\times 200$)



The image on the left is immunohistochemistry of paraffin-embedded Human lung cancer tissue using (TCEB3B Antibody) at dilution 1/25, on the right is treated with synthetic peptide. (Original magnification: $\times 200$)