

Product datasheet for **TA351792**

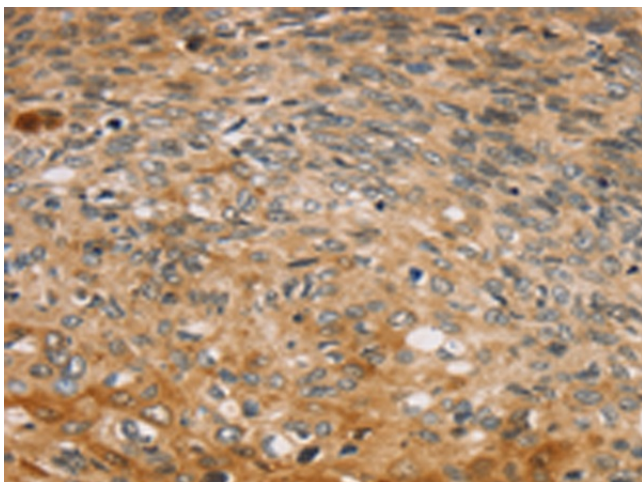
TBC1D21 Rabbit Polyclonal Antibody

Product data:

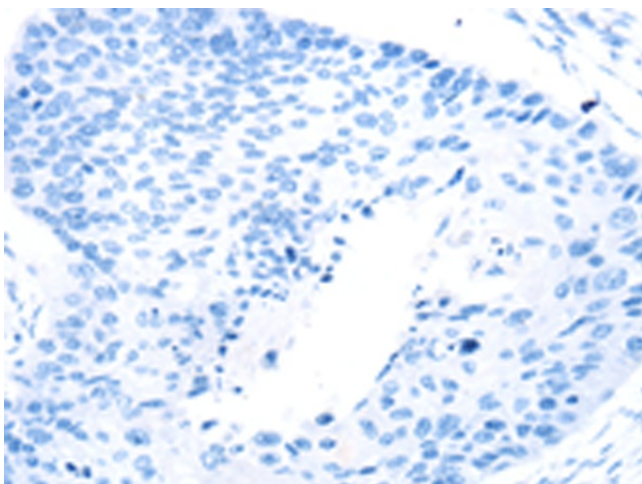
Product Type:	Primary Antibodies
Applications:	IHC
Recommended Dilution:	IHC: 25-100 Positive control: Human esophagus cancer Predicted cell location: Cytoplasm
Reactivity:	Human
Host:	Rabbit
Isotype:	IgG
Clonality:	Polyclonal
Immunogen:	Synthetic peptide of human TBC1D21
Formulation:	pH7.4 PBS, 0.05% NaN ₃ , 40% Glycerol
Concentration:	lot specific
Purification:	Antigen affinity purification
Conjugation:	Unconjugated
Storage:	Store at -20°C as received.
Stability:	Stable for 12 months from date of receipt.
Gene Name:	TBC1 domain family member 21
Database Link:	NP_699187 Entrez Gene 161514 Human Q8IYX1
Background:	TBC1D21 gene (TBC1 domain family member 21) is located on human chromosome 15, acts as a GTPase-activating protein for Rab family proteins. Rab family proteins comprise G proteins of the Ras superfamily that belong to a protein superfamily of small GTPases. Approximately 70 types of Rabs have been identified in humans. They are regulators of membrane traffic, including vesicle formation, vesicle movement along actin and tubulin networks, and membrane fusion.
Synonyms:	MgcRabGAP



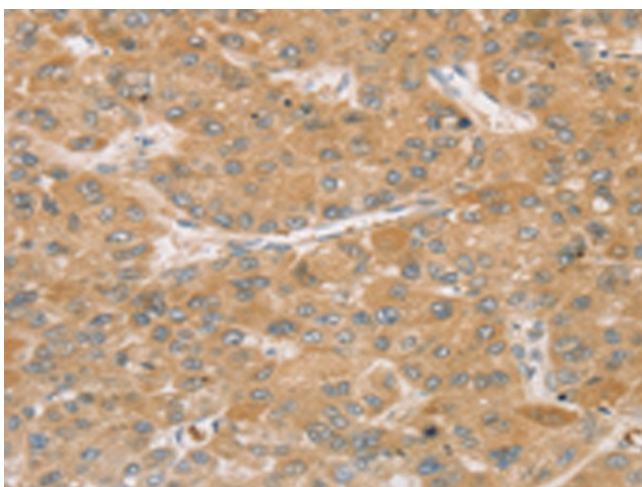
[View online »](#)

Product images:

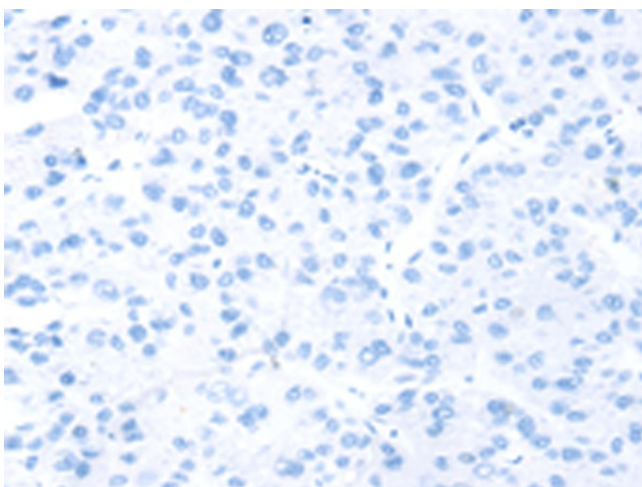
Immunohistochemistry of paraffin-embedded Human esophagus cancer tissue using TA351792 (TBC1D21 Antibody) at dilution 1/30 (Original magnification: $\times 200$)



Immunohistochemistry of paraffin-embedded Human esophagus cancer tissue using TA351792 (TBC1D21 Antibody) at dilution 1/30, treated with synthetic peptide. (Original magnification: $\times 200$)



Immunohistochemistry of paraffin-embedded Human liver cancer tissue using TA351792 (TBC1D21 Antibody) at dilution 1/30 (Original magnification: $\times 200$)



Immunohistochemistry of paraffin-embedded Human liver cancer tissue using TA351792 (TBC1D21 Antibody) at dilution 1/30, treated with synthetic peptide. (Original magnification: $\times 200$)