

Product datasheet for **TA351791**

TBC1D21 Rabbit Polyclonal Antibody

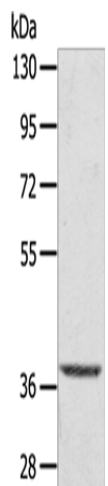
Product data:

Product Type:	Primary Antibodies
Applications:	WB
Recommended Dilution:	WB: 200-1000 WB positive control: Hepg2 cells
Reactivity:	Human
Host:	Rabbit
Isotype:	IgG
Clonality:	Polyclonal
Immunogen:	Synthetic peptide of human TBC1D21
Formulation:	pH7.4 PBS, 0.05% NaN ₃ , 40% Glycerol
Concentration:	lot specific
Purification:	Antigen affinity purification
Conjugation:	Unconjugated
Storage:	Store at -20°C as received.
Stability:	Stable for 12 months from date of receipt.
Predicted Protein Size:	39 kDa
Gene Name:	TBC1 domain family member 21
Database Link:	NP_699187 Entrez Gene 161514 Human Q8IYX1
Background:	TBC1D21 gene (TBC1 domain family member 21) is located on human chromosome 15, acts as a GTPase-activating protein for Rab family proteins. Rab family proteins comprise G proteins of the Ras superfamily that belong to a protein superfamily of small GTPases. Approximately 70 types of Rabs have been identified in humans. They are regulators of membrane traffic, including vesicle formation, vesicle movement along actin and tubulin networks, and membrane fusion.
Synonyms:	MgcRabGAP



[View online »](#)

Product images:



Gel: 8%SDS-PAGE
Lysate: 40 μ g
Lane: Hepg2 cells
Primary antibody: TA351791 (TBC1D21 Antibody)
at dilution 1/300
Secondary antibody: Goat anti rabbit IgG at
1/8000 dilution
Exposure time: 10 seconds