

Product datasheet for **TA351789**

TBC1D4 Rabbit Polyclonal Antibody

Product data:

Product Type:	Primary Antibodies
Applications:	IHC, WB
Recommended Dilution:	WB: 500-2000 WB positive control: Hela and hepg2 cells IHC: 30-150 Positive control: Human breast cancer Predicted cell location: Cytoplasm and Cell membrane
Reactivity:	Human, Mouse
Host:	Rabbit
Isotype:	IgG
Clonality:	Polyclonal
Immunogen:	Synthetic peptide of human TBC1D4
Formulation:	pH7.4 PBS, 0.05% NaN ₃ , 40% Glycerol
Concentration:	lot specific
Purification:	Antigen affinity purification
Conjugation:	Unconjugated
Storage:	Store at -20°C as received.
Stability:	Stable for 12 months from date of receipt.
Predicted Protein Size:	147 kDa
Gene Name:	TBC1 domain family member 4
Database Link:	NP_055647 Entrez Gene 210789 Mouse Entrez Gene 9882 Human O60343



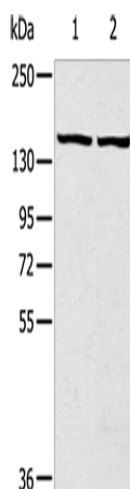
[View online »](#)

Background:

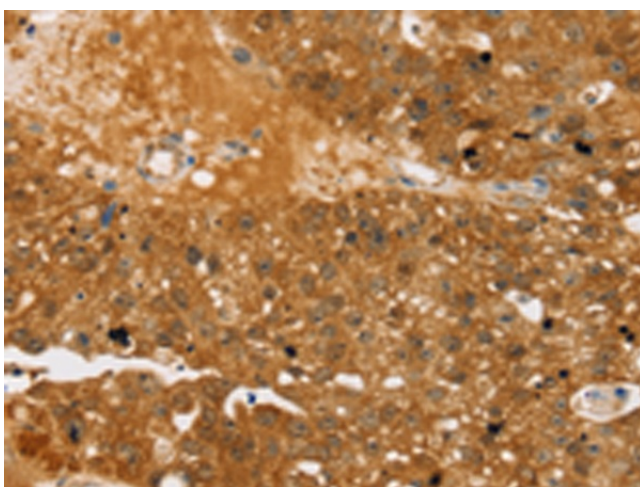
TBC1 domain family member 4 (TBC1D4), also designated AS160, can be insulin- and/or AKT1-induced. Insulin-stimulated phosphorylation is required for GLUT4 translocation. TBC1D4 may play a role as a GTPase activating protein for proteins in the Rab family. It is expressed primarily in skeletal muscle and heart, as well as spleen, lymph node and leukocytes. Defects in the TBC1D4 gene may cause atopic dermatitis (AD), sometimes referred to as eczema, an atopic chronic skin disease. The skin of affected individuals reacts to irritants or allergens and becomes red, flaky and itchy. The skin is also more vulnerable to inflammations, and symptoms can grow or disappear over time.

Synonyms:

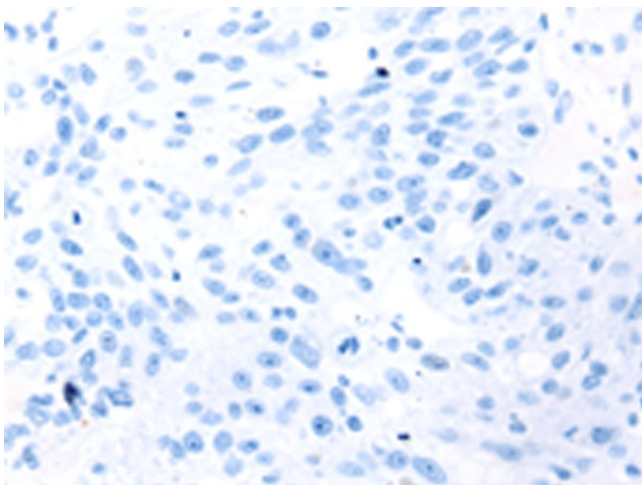
AS160; NIDDM5

Product images:

Gel: 6%SDS-PAGE
Lysate: 40 µg
Lane 1-2: HeLa cells
hepg2 cells
Primary antibody: TA351789 (TBC1D4 Antibody)
at dilution 1/320
Secondary antibody: Goat anti rabbit IgG at
1/8000 dilution
Exposure time: 5 seconds



Immunohistochemistry of paraffin-embedded
Human breast cancer tissue using TA351789
(TBC1D4 Antibody) at dilution 1/40 (Original
magnification: ×200)



Immunohistochemistry of paraffin-embedded Human breast cancer tissue using TA351789 (TBC1D4 Antibody) at dilution 1/40, treated with synthetic peptide. (Original magnification: $\times 200$)