

Product datasheet for **TA351783**

TAF15 Rabbit Polyclonal Antibody

Product data:

Product Type:	Primary Antibodies
Applications:	IHC, WB
Recommended Dilution:	WB: 500-2000 WB positive control: Jurkat, hepg2, Raji and A431 cells IHC: 25-100 Positive control: Human breast cancer Predicted cell location: Nucleus
Reactivity:	Human
Host:	Rabbit
Isotype:	IgG
Clonality:	Polyclonal
Immunogen:	Synthetic peptide of human TAF15
Formulation:	pH7.4 PBS, 0.05% NaN ₃ , 40% Glycerol
Concentration:	lot specific
Purification:	Antigen affinity purification
Conjugation:	Unconjugated
Storage:	Store at -20°C as received.
Stability:	Stable for 12 months from date of receipt.
Predicted Protein Size:	62 kDa
Gene Name:	TATA-box binding protein associated factor 15
Database Link:	NP_631961 Entrez Gene 8148 Human Q92804

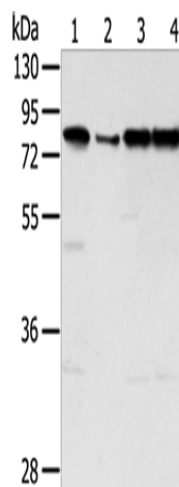
Background: This gene encodes a member of the TET family of RNA-binding proteins. The encoded protein plays a role in RNA polymerase II gene transcription as a component of a distinct subset of multi-subunit transcription initiation factor TFIID complexes. Translocations involving this gene play a role in acute leukemia and extraskeletal myxoid chondrosarcoma, and mutations in this gene may play a role in amyotrophic lateral sclerosis.

[View online »](#)

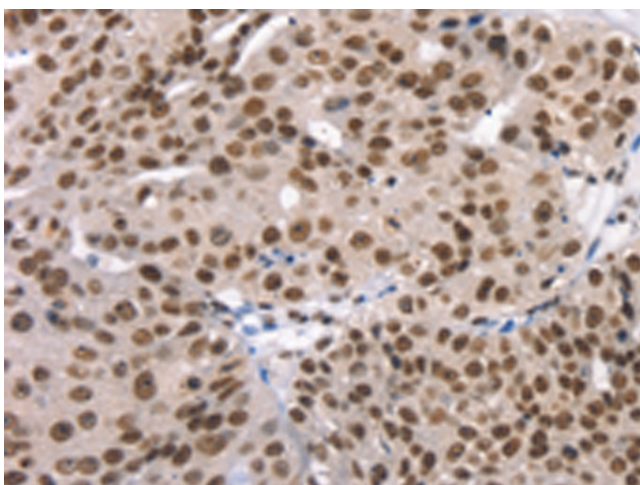
Synonyms: Npl3; RBP56; TAF2N; TAFII68

Protein Families: Druggable Genome

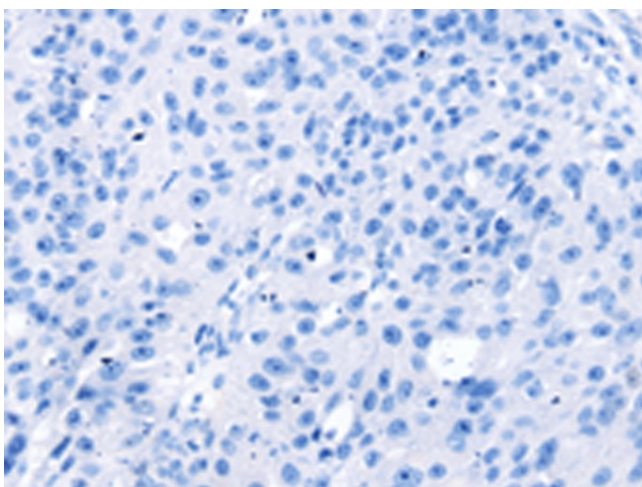
Product images:



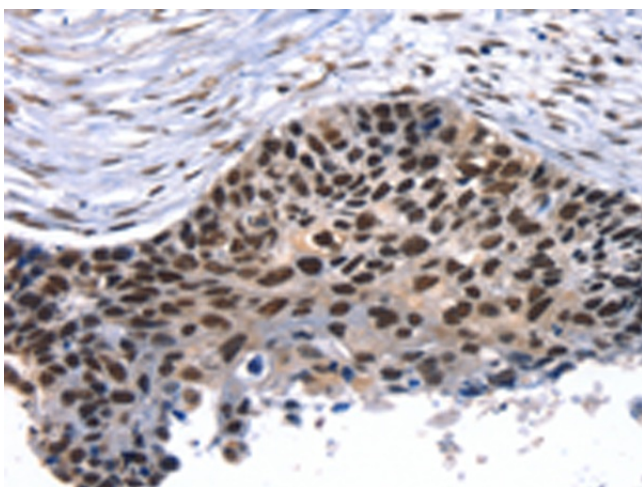
Gel: 8%SDS-PAGE
Lysate: 40 µg
Lane 1-4: Jurkat cells
hepg2 cells
Raji cells
A431 cells
Primary antibody: TA351783 (TAF15 Antibody) at dilution 1/450
Secondary antibody: Goat anti rabbit IgG at 1/8000 dilution
Exposure time: 10 seconds



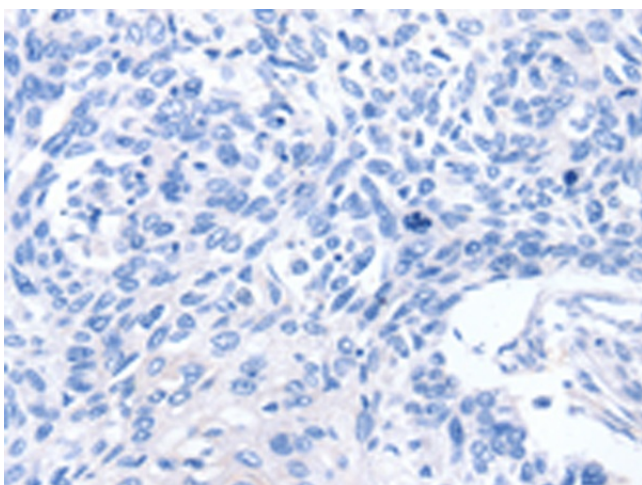
Immunohistochemistry of paraffin-embedded Human breast cancer tissue using TA351783 (TAF15 Antibody) at dilution 1/35 (Original magnification: ×200)



Immunohistochemistry of paraffin-embedded Human breast cancer tissue using TA351783 (TAF15 Antibody) at dilution 1/35, treated with synthetic peptide. (Original magnification: ×200)



Immunohistochemistry of paraffin-embedded Human esophagus cancer tissue using TA351783 (TAF15 Antibody) at dilution 1/35 (Original magnification: ×200)



Immunohistochemistry of paraffin-embedded Human esophagus cancer tissue using TA351783 (TAF15 Antibody) at dilution 1/35, treated with synthetic peptide. (Original magnification: ×200)