

## Product datasheet for **TA351782**

### TACC2 Rabbit Polyclonal Antibody

#### Product data:

Product Type:	Primary Antibodies
Applications:	IHC, WB
Recommended Dilution:	WB: 200-1000 WB positive control: Mouse muscle tissue IHC: 25-100 Positive control: Human liver cancer Predicted cell location: Cytoplasm or Nucleus
Reactivity:	Human, Mouse
Host:	Rabbit
Isotype:	IgG
Clonality:	Polyclonal
Immunogen:	Synthetic peptide of human TACC2
Formulation:	pH7.4 PBS, 0.05% NaN <sub>3</sub> , 40% Glycerol
Concentration:	lot specific
Purification:	Antigen affinity purification
Conjugation:	Unconjugated
Storage:	Store at -20°C as received.
Stability:	Stable for 12 months from date of receipt.
Predicted Protein Size:	310 kDa
Gene Name:	transforming acidic coiled-coil containing protein 2
Database Link:	<a href="#">NP_008928</a> <a href="#">Entrez Gene 57752 Mouse</a> <a href="#">Entrez Gene 10579 Human</a> <a href="#">O95359</a>



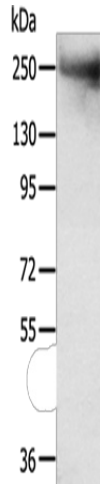
[View online »](#)

**Background:**

Transforming acidic coiled-coil proteins are a conserved family of centrosome- and microtubule-interacting proteins that are implicated in cancer. This gene encodes a protein that concentrates at centrosomes throughout the cell cycle. This gene lies within a chromosomal region associated with tumorigenesis. Expression of this gene is induced by erythropoietin and is thought to affect the progression of breast tumors. Several transcript variants encoding different isoforms have been found for this gene.

**Synonyms:**

AZU-1; ECTACC

**Product images:**

Gel: 6%SDS-PAGE

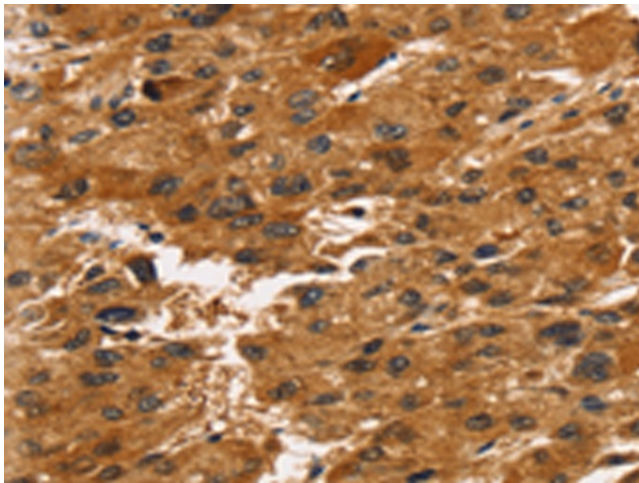
Lysate: 40  $\mu$ g

Lane: Mouse muscle tissue

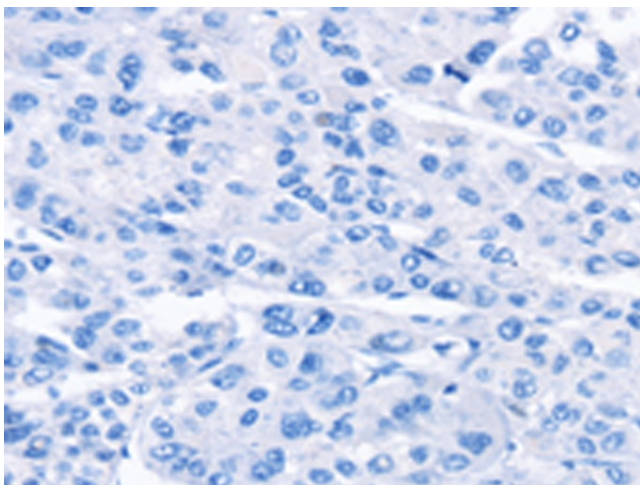
Primary antibody: TA351782 (TACC2 Antibody) at dilution 1/300

Secondary antibody: Goat anti rabbit IgG at 1/8000 dilution

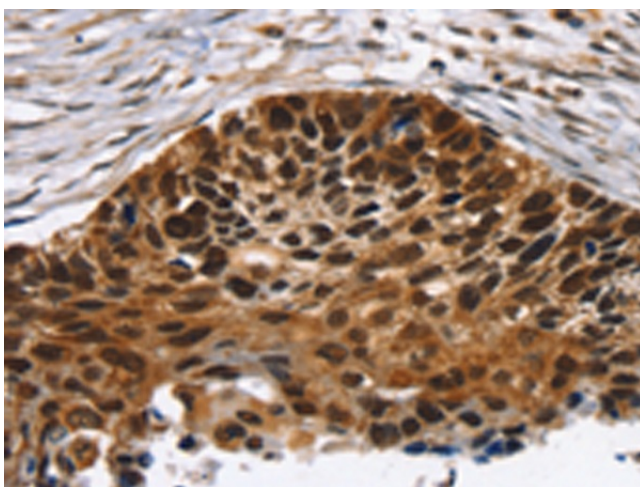
Exposure time: 5 minutes



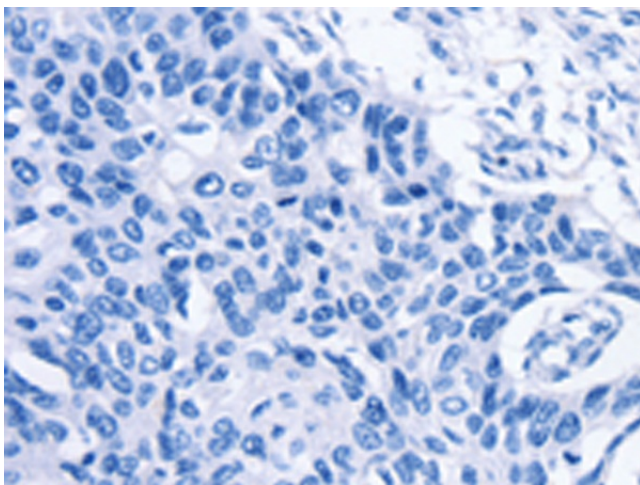
Immunohistochemistry of paraffin-embedded Human liver cancer tissue using TA351782 (TACC2 Antibody) at dilution 1/30 (Original magnification:  $\times$ 200)



Immunohistochemistry of paraffin-embedded Human liver cancer tissue using TA351782 (TACC2 Antibody) at dilution 1/30, treated with synthetic peptide. (Original magnification: x200)



Immunohistochemistry of paraffin-embedded Human esophagus cancer tissue using TA351782 (TACC2 Antibody) at dilution 1/30 (Original magnification: x200)



Immunohistochemistry of paraffin-embedded Human esophagus cancer tissue using TA351782 (TACC2 Antibody) at dilution 1/30, treated with synthetic peptide. (Original magnification: x200)