

Product datasheet for **TA351779**

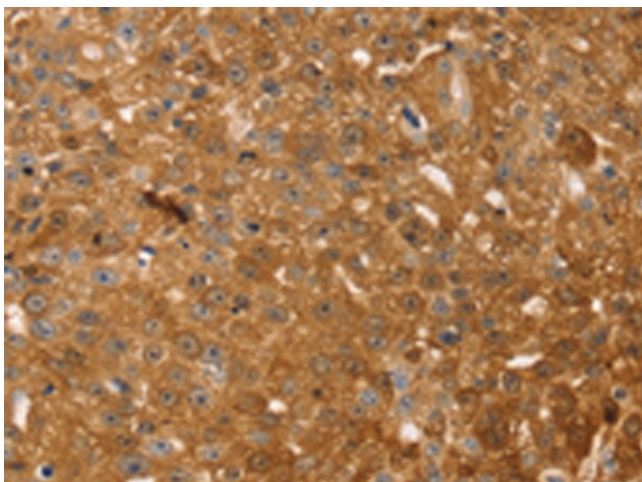
Thymosin beta 10 (TMSB10) Rabbit Polyclonal Antibody

Product data:

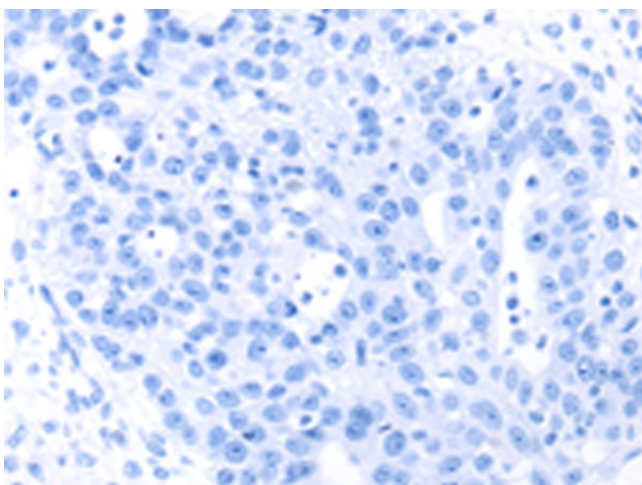
Product Type:	Primary Antibodies
Applications:	IHC
Recommended Dilution:	IHC: 30-150 Positive control: Human breast cancer Predicted cell location: Cytoplasm
Reactivity:	Human, Mouse, Rat
Host:	Rabbit
Isotype:	IgG
Clonality:	Polyclonal
Immunogen:	Synthetic peptide of human TMSB10
Formulation:	pH7.4 PBS, 0.05% NaN ₃ , 40% Glycerol
Concentration:	lot specific
Purification:	Antigen affinity purification
Conjugation:	Unconjugated
Storage:	Store at -20°C as received.
Stability:	Stable for 12 months from date of receipt.
Gene Name:	thymosin beta 10
Database Link:	NP_066926 Entrez Gene 19240 Mouse Entrez Gene 50665 Rat Entrez Gene 9168 Human P63313
Background:	Thymosin beta-10 plays an important role in the organization of the cytoskeleton. Thymosin beta-10 binds to and sequesters actin monomers (G actin) and therefore inhibits actin polymerization. The expression of thymosin beta-10 dramatically decreases after birth.
Synonyms:	MIG12; TB10



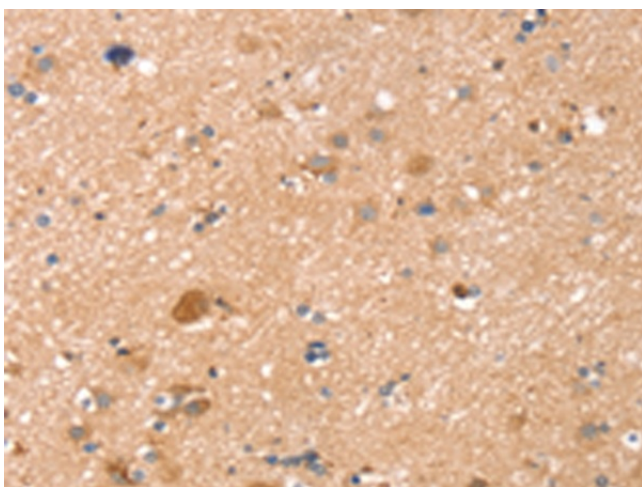
[View online »](#)

Product images:

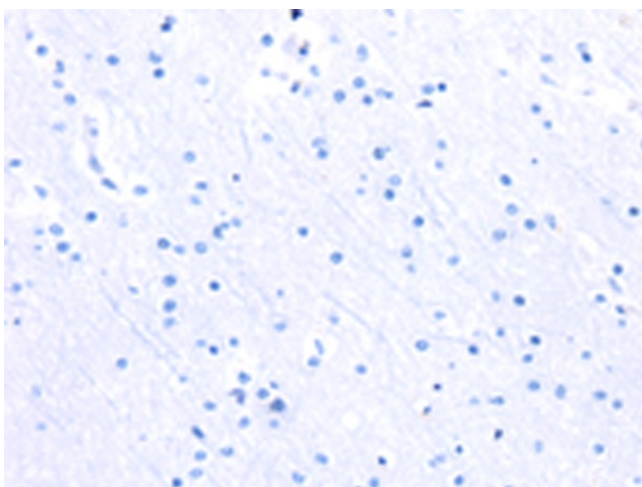
Immunohistochemistry of paraffin-embedded Human breast cancer tissue using TA351779 (TMSB10 Antibody) at dilution 1/35 (Original magnification: $\times 200$)



Immunohistochemistry of paraffin-embedded Human breast cancer tissue using TA351779 (TMSB10 Antibody) at dilution 1/35, treated with synthetic peptide. (Original magnification: $\times 200$)



Immunohistochemistry of paraffin-embedded Human brain tissue using TA351779 (TMSB10 Antibody) at dilution 1/35 (Original magnification: ×200)



Immunohistochemistry of paraffin-embedded Human brain tissue using TA351779 (TMSB10 Antibody) at dilution 1/35, treated with synthetic peptide. (Original magnification: ×200)