

Product datasheet for **TA351774S**

c20orf72 (MGME1) Rabbit Polyclonal Antibody

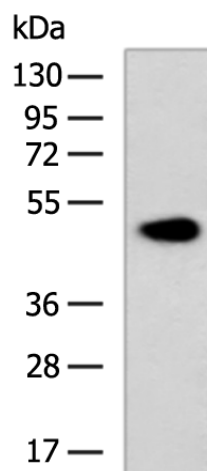
Product data:

Product Type:	Primary Antibodies
Applications:	IHC, WB
Recommended Dilution:	WB: 500-2000 WB positive control: Rat kidney tissue lysate IHC: 50-100 Positive control: Human esophagus cancer Predicted cell location: Cytoplasm and Cell membrane
Reactivity:	Human, Mouse, Rat
Host:	Rabbit
Isotype:	IgG
Clonality:	Polyclonal
Immunogen:	Synthetic peptide of human SDC3
Formulation:	pH7.4 PBS, 0.05% NaN ₃ , 40% Glycerol
Purification:	Antigen affinity purification
Conjugation:	Unconjugated
Storage:	Store at -20°C as received.
Stability:	Stable for 12 months from date of receipt.
Predicted Protein Size:	45 kDa
Gene Name:	mitochondrial genome maintenance exonuclease 1
Database Link:	NP_443097 Entrez Gene 296200 RatEntrez Gene 92667 Human Q9BQP7
Background:	The protein encoded by this gene belongs to the syndecan proteoglycan family. It may play a role in the organization of cell shape by affecting the actin cytoskeleton, possibly by transferring signals from the cell surface in a sugar-dependent mechanism. Allelic variants of this gene have been associated with obesity.
Synonyms:	bA504H3.4; C20orf72; DDK1; MTDPS11

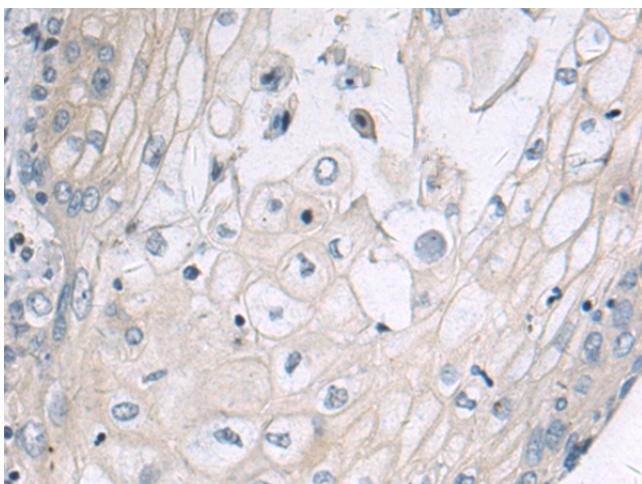


[View online »](#)

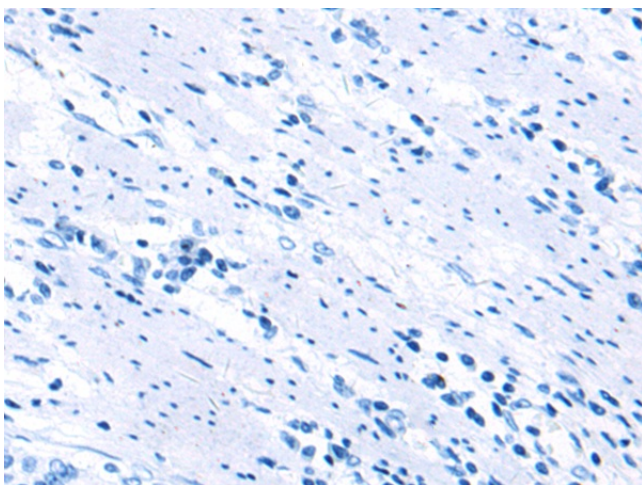
Product images:



Gel: 8%SDS-PAGE
Lysate: 40 μ g
Lane: Rat kidney tissue lysate
Primary antibody: [TA351774] (SDC3 Antibody) at dilution 1/600
Secondary antibody: Goat anti rabbit IgG at 1/5000 dilution
Exposure time: 7 seconds



Immunohistochemistry of paraffin-embedded Human esophagus cancer tissue using [TA351774] (SDC3 Antibody) at dilution 1/50 (Original magnification: \times 200)



Immunohistochemistry of paraffin-embedded Human esophagus cancer tissue using [TA351774] (SDC3 Antibody) at dilution 1/50, treated with synthetic peptide. (Original magnification: \times 200)