

Product datasheet for **TA351773**

ERVWE1 (ERVW-1) Rabbit Polyclonal Antibody

Product data:

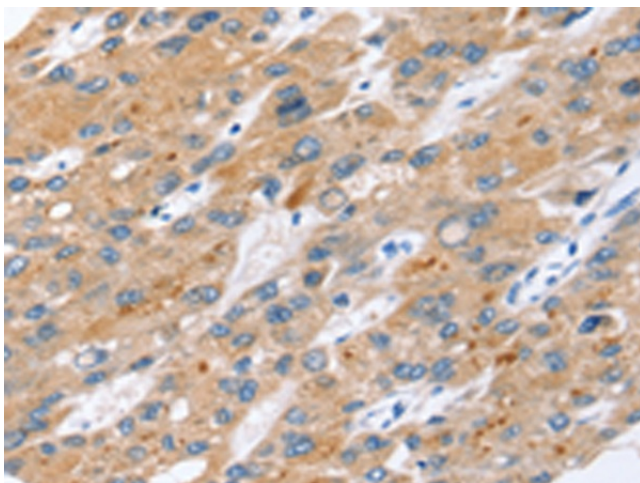
Product Type:	Primary Antibodies
Applications:	IHC
Recommended Dilution:	IHC: 25-100 Positive control: Human liver cancer Predicted cell location: Cytoplasm and Cell membrane
Reactivity:	Human
Host:	Rabbit
Isotype:	IgG
Clonality:	Polyclonal
Immunogen:	Synthetic peptide of human ERVW-1
Formulation:	pH7.4 PBS, 0.05% NaN ₃ , 40% Glycerol
Concentration:	lot specific
Purification:	Antigen affinity purification
Conjugation:	Unconjugated
Storage:	Store at -20°C as received.
Stability:	Stable for 12 months from date of receipt.
Gene Name:	endogenous retrovirus group W member 1
Database Link:	NP_055405 Entrez Gene 30816 Human Q9UQF0
Background:	Many different human endogenous retrovirus (HERV) families are expressed in normal placental tissue at high levels, suggesting that HERVs are functionally important in reproduction. This gene is part of an HERV provirus on chromosome 7 that has inactivating mutations in the gag and pol genes. This gene is the envelope glycoprotein gene which appears to have been selectively preserved. The gene's protein product is expressed in the placental syncytiotrophoblast and is involved in fusion of the cytotrophoblast cells to form the syncytial layer of the placenta.
Synonyms:	ENV; ENVW; ERVWE1; HERV-7q; HERV-W-ENV; HERV7Q; HERVW; HERVWENV



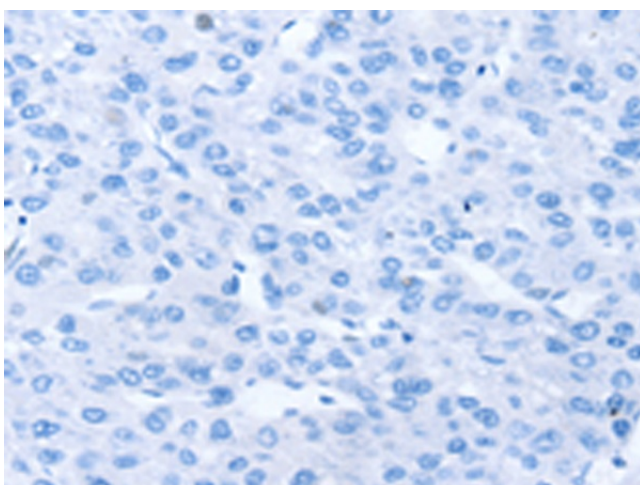
[View online »](#)

Protein Families: Transmembrane

Product images:



Immunohistochemistry of paraffin-embedded Human liver cancer tissue using TA351773 (ERVW-1 Antibody) at dilution 1/45 (Original magnification: $\times 200$)



Immunohistochemistry of paraffin-embedded Human liver cancer tissue using TA351773 (ERVW-1 Antibody) at dilution 1/45, treated with synthetic peptide. (Original magnification: $\times 200$)