

Product datasheet for **TA351770S**

ABCC9 Rabbit Polyclonal Antibody

Product data:

Product Type:	Primary Antibodies
Applications:	IHC, WB
Recommended Dilution:	WB: 200-1000 WB positive control: Mouse bladder tissue IHC: 40-150 Positive control: Human liver cancer Predicted cell location: Cytoplasm
Reactivity:	Human, Mouse, Rat
Host:	Rabbit
Isotype:	IgG
Clonality:	Polyclonal
Immunogen:	Synthetic peptide of human ABCC9
Formulation:	pH7.4 PBS, 0.05% NaN ₃ , 40% Glycerol
Purification:	Antigen affinity purification
Conjugation:	Unconjugated
Storage:	Store at -20°C as received.
Stability:	Stable for 12 months from date of receipt.
Predicted Protein Size:	175 kDa
Gene Name:	ATP binding cassette subfamily C member 9
Database Link:	NP_064693 Entrez Gene 20928 MouseEntrez Gene 25560 RatEntrez Gene 10060 Human O60706

Background: The protein encoded by this gene is a member of the superfamily of ATP-binding cassette (ABC) transporters. ABC proteins transport various molecules across extra- and intra-cellular membranes. ABC genes are divided into seven distinct subfamilies (ABC1, MDR/TAP, MRP, ALD, OABP, GCN20, White). This protein is a member of the MRP subfamily which is involved in multi-drug resistance. This protein is thought to form ATP-sensitive potassium channels in cardiac, skeletal, and vascular and non-vascular smooth muscle.



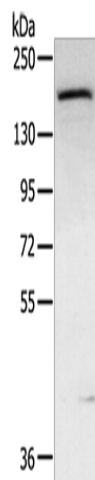
[View online »](#)

Synonyms: ABC37; ATFB12; CANTU; CMD10; SUR2

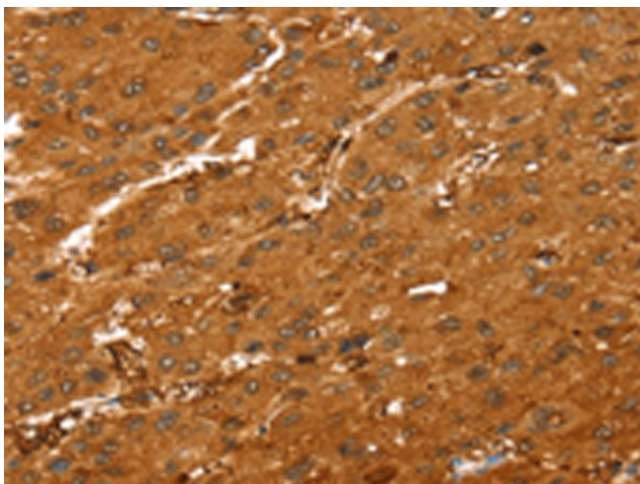
Protein Families: Druggable Genome, Transmembrane

Protein Pathways: ABC transporters

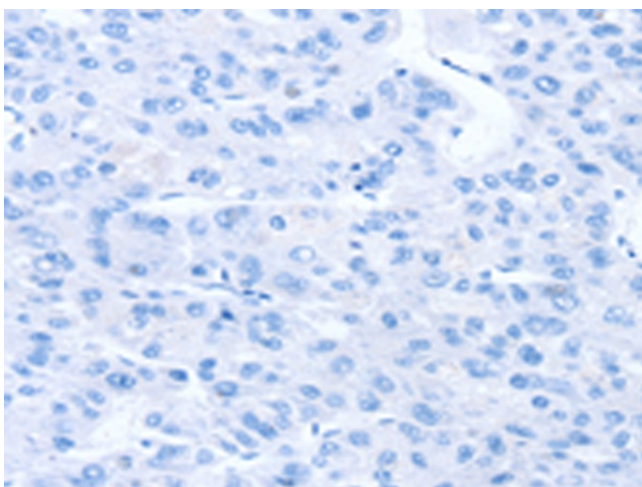
Product images:



Gel: 6%SDS-PAGE
Lysate: 40 µg
Lane: Mouse bladder tissue
Primary antibody: [TA351770] (ABCC9 Antibody) at dilution 1/300
Secondary antibody: Goat anti rabbit IgG at 1/8000 dilution
Exposure time: 5 minutes



Immunohistochemistry of paraffin-embedded Human liver cancer tissue using [TA351770] (ABCC9 Antibody) at dilution 1/35 (Original magnification: ×200)



Immunohistochemistry of paraffin-embedded Human liver cancer tissue using [TA351770] (ABCC9 Antibody) at dilution 1/35, treated with synthetic peptide. (Original magnification: ×200)