

## Product datasheet for **TA351770**

### ABCC9 Rabbit Polyclonal Antibody

#### Product data:

Product Type:	Primary Antibodies
Applications:	IHC, WB
Recommended Dilution:	WB: 200-1000 WB positive control: Mouse bladder tissue IHC: 40-150 Positive control: Human liver cancer Predicted cell location: Cytoplasm
Reactivity:	Human, Mouse, Rat
Host:	Rabbit
Isotype:	IgG
Clonality:	Polyclonal
Immunogen:	Synthetic peptide of human ABCC9
Formulation:	pH7.4 PBS, 0.05% NaN <sub>3</sub> , 40% Glycerol
Concentration:	lot specific
Purification:	Antigen affinity purification
Conjugation:	Unconjugated
Storage:	Store at -20°C as received.
Stability:	Stable for 12 months from date of receipt.
Predicted Protein Size:	175 kDa
Gene Name:	ATP binding cassette subfamily C member 9
Database Link:	<a href="#">NP_064693</a> <a href="#">Entrez Gene 20928 Mouse</a> <a href="#">Entrez Gene 25560 Rat</a> <a href="#">Entrez Gene 10060 Human</a> <a href="#">O60706</a>



[View online »](#)

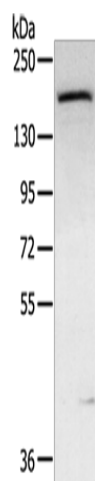
**Background:** The protein encoded by this gene is a member of the superfamily of ATP-binding cassette (ABC) transporters. ABC proteins transport various molecules across extra- and intra-cellular membranes. ABC genes are divided into seven distinct subfamilies (ABC1, MDR/TAP, MRP, ALD, OABP, GCN20, White). This protein is a member of the MRP subfamily which is involved in multi-drug resistance. This protein is thought to form ATP-sensitive potassium channels in cardiac, skeletal, and vascular and non-vascular smooth muscle.

**Synonyms:** ABC37; ATFB12; CANTU; CMD10; SUR2

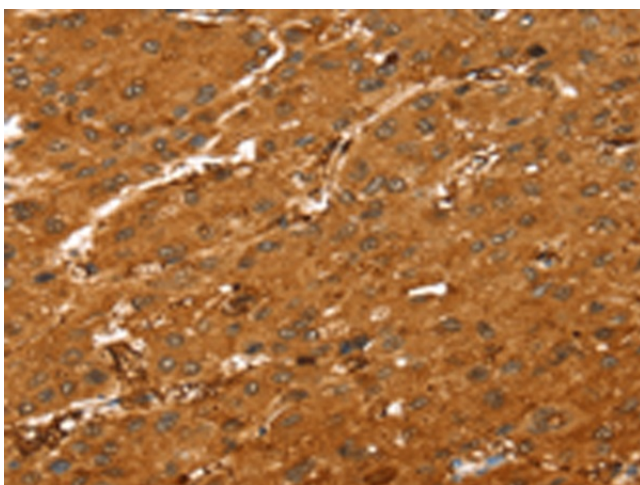
**Protein Families:** Druggable Genome, Transmembrane

**Protein Pathways:** ABC transporters

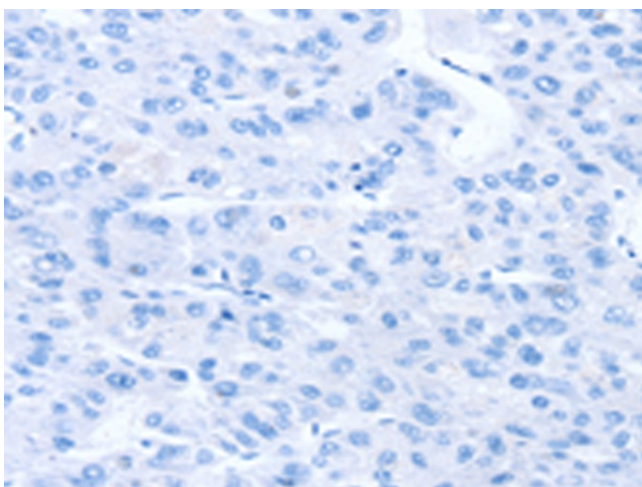
### Product images:



Gel: 6%SDS-PAGE  
Lysate: 40 µg  
Lane: Mouse bladder tissue  
Primary antibody: TA351770 (ABCC9 Antibody) at dilution 1/300  
Secondary antibody: Goat anti rabbit IgG at 1/8000 dilution  
Exposure time: 5 minutes



Immunohistochemistry of paraffin-embedded Human liver cancer tissue using TA351770 (ABCC9 Antibody) at dilution 1/35 (Original magnification: ×200)



Immunohistochemistry of paraffin-embedded Human liver cancer tissue using TA351770 (ABCC9 Antibody) at dilution 1/35, treated with synthetic peptide. (Original magnification:  $\times 200$ )