

Product datasheet for **TA351769**

SUR1 (ABCC8) Rabbit Polyclonal Antibody

Product data:

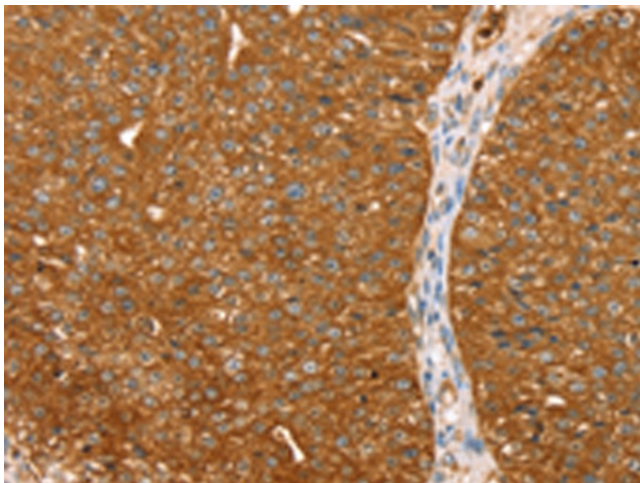
Product Type:	Primary Antibodies
Applications:	IHC
Recommended Dilution:	IHC: 35-150 Positive control: Human breast cancer Predicted cell location: Cytoplasm and Cell membrane
Reactivity:	Human, Rat
Host:	Rabbit
Isotype:	IgG
Clonality:	Polyclonal
Immunogen:	Synthetic peptide of human ABCC8
Formulation:	pH7.4 PBS, 0.05% NaN ₃ , 40% Glycerol
Concentration:	lot specific
Purification:	Antigen affinity purification
Conjugation:	Unconjugated
Storage:	Store at -20°C as received.
Stability:	Stable for 12 months from date of receipt.
Gene Name:	ATP binding cassette subfamily C member 8
Database Link:	NP_000343 Entrez Gene 25559 Rat Entrez Gene 6833 Human Q09428
Background:	The protein encoded by this gene is a member of the superfamily of ATP-binding cassette (ABC) transporters. ABC proteins transport various molecules across extra- and intra-cellular membranes. ABC genes are divided into seven distinct subfamilies (ABC1, MDR/TAP, MRP, ALD, OABP, GCN20, White). This protein is a member of the MRP subfamily which is involved in multi-drug resistance. This protein functions as a modulator of ATP-sensitive potassium channels and insulin release.
Synonyms:	ABC36; HHF1; HI; HRINS; MRP8; PHHI; SUR; SUR1; SUR1delta2; TNDM2
Protein Families:	Druggable Genome, Transmembrane



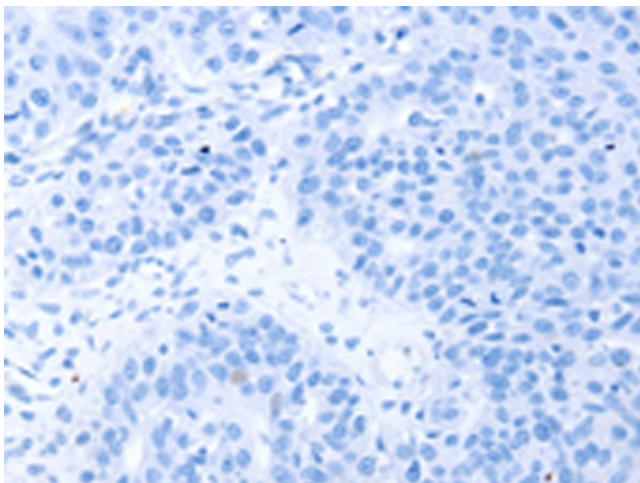
[View online »](#)

Protein Pathways: ABC transporters, Type II diabetes mellitus

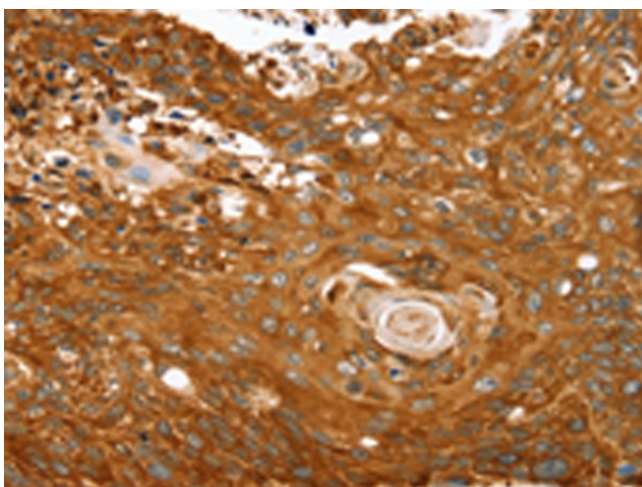
Product images:



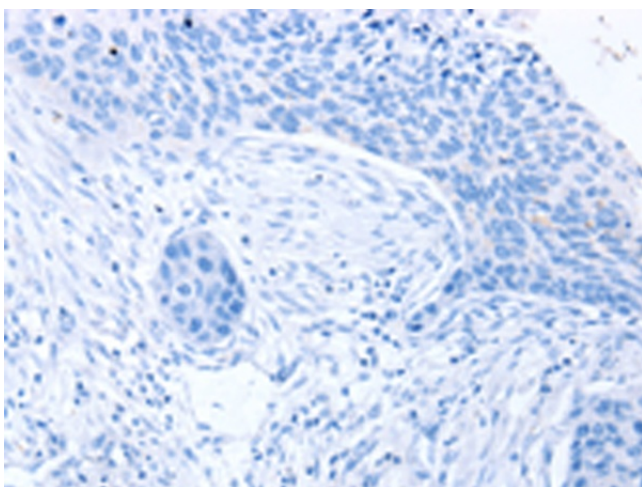
Immunohistochemistry of paraffin-embedded Human breast cancer tissue using TA351769 (ABCC8 Antibody) at dilution 1/40 (Original magnification: $\times 200$)



Immunohistochemistry of paraffin-embedded Human breast cancer tissue using TA351769 (ABCC8 Antibody) at dilution 1/40, treated with synthetic peptide. (Original magnification: $\times 200$)



Immunohistochemistry of paraffin-embedded Human esophagus cancer tissue using TA351769 (ABCC8 Antibody) at dilution 1/40 (Original magnification: $\times 200$)



Immunohistochemistry of paraffin-embedded Human esophagus cancer tissue using TA351769 (ABCC8 Antibody) at dilution 1/40, treated with synthetic peptide. (Original magnification: $\times 200$)