

## Product datasheet for **TA351765S**

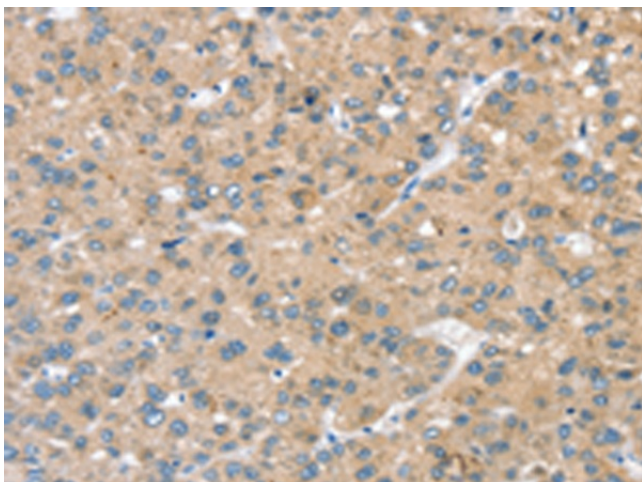
### STK32C Rabbit Polyclonal Antibody

#### Product data:

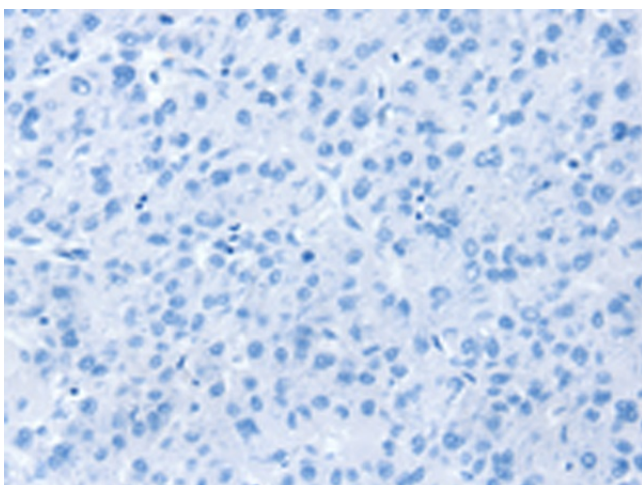
Product Type:	Primary Antibodies
Applications:	IHC
Recommended Dilution:	IHC: 20-100 Positive control: Human liver cancer Predicted cell location: Cytoplasm
Reactivity:	Human, Mouse
Host:	Rabbit
Isotype:	IgG
Clonality:	Polyclonal
Immunogen:	Synthetic peptide of human STK32C
Formulation:	pH7.4 PBS, 0.05% NaN <sub>3</sub> , 40% Glycerol
Purification:	Antigen affinity purification
Conjugation:	Unconjugated
Storage:	Store at -20°C as received.
Stability:	Stable for 12 months from date of receipt.
Gene Name:	serine/threonine kinase 32C
Database Link:	<a href="#">NP_775846</a> <a href="#">Entrez Gene 57740 Mouse</a> <a href="#">Entrez Gene 282974 Human</a> <a href="#">Q86UX6</a>
Background:	The protein encoded by this gene is a member of the serine/threonine protein kinase family. The specific function of this kinase is not known.
Synonyms:	PKE; YANK3
Protein Families:	Druggable Genome, Protein Kinase



[View online »](#)

**Product images:**

Immunohistochemistry of paraffin-embedded Human liver cancer tissue using [TA351765] (STK32C Antibody) at dilution 1/20 (Original magnification:  $\times 200$ )



Immunohistochemistry of paraffin-embedded Human liver cancer tissue using [TA351765] (STK32C Antibody) at dilution 1/20, treated with synthetic peptide. (Original magnification:  $\times 200$ )