

Product datasheet for **TA351765**

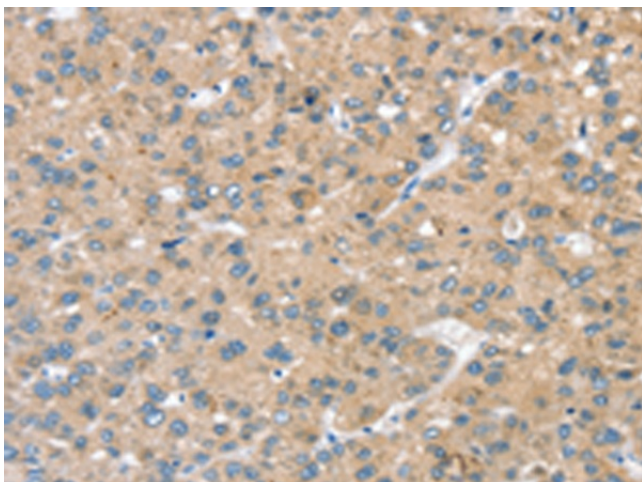
STK32C Rabbit Polyclonal Antibody

Product data:

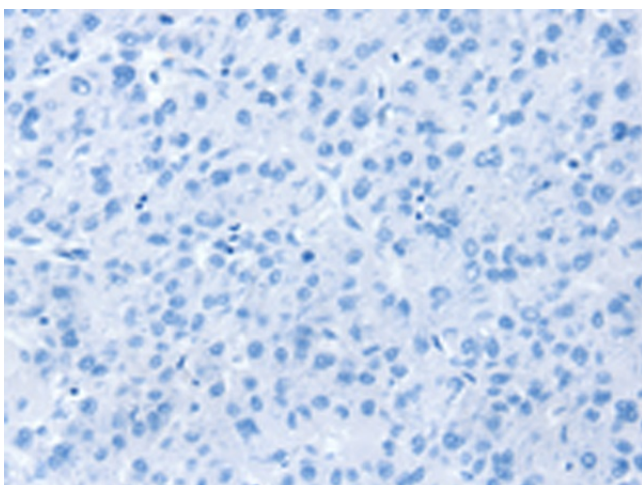
Product Type:	Primary Antibodies
Applications:	IHC
Recommended Dilution:	IHC: 20-100 Positive control: Human liver cancer Predicted cell location: Cytoplasm
Reactivity:	Human, Mouse
Host:	Rabbit
Isotype:	IgG
Clonality:	Polyclonal
Immunogen:	Synthetic peptide of human STK32C
Formulation:	pH7.4 PBS, 0.05% NaN ₃ , 40% Glycerol
Concentration:	lot specific
Purification:	Antigen affinity purification
Conjugation:	Unconjugated
Storage:	Store at -20°C as received.
Stability:	Stable for 12 months from date of receipt.
Gene Name:	serine/threonine kinase 32C
Database Link:	NP_775846 Entrez Gene 57740 Mouse Entrez Gene 282974 Human Q86UX6
Background:	The protein encoded by this gene is a member of the serine/threonine protein kinase family. The specific function of this kinase is not known.
Synonyms:	PKE; YANK3
Protein Families:	Druggable Genome, Protein Kinase



[View online »](#)

Product images:

Immunohistochemistry of paraffin-embedded Human liver cancer tissue using TA351765 (STK32C Antibody) at dilution 1/20 (Original magnification: $\times 200$)



Immunohistochemistry of paraffin-embedded Human liver cancer tissue using TA351765 (STK32C Antibody) at dilution 1/20, treated with synthetic peptide. (Original magnification: $\times 200$)