

Product datasheet for **TA351763**

STK32A Rabbit Polyclonal Antibody

Product data:

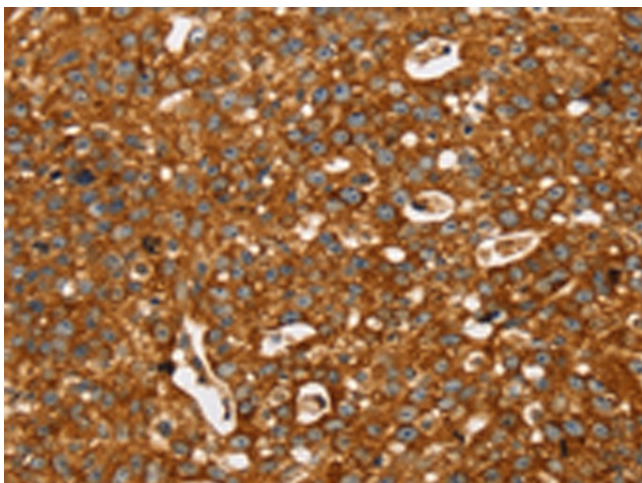
Product Type:	Primary Antibodies
Applications:	IHC
Recommended Dilution:	IHC: 25-100 Positive control: Human breast cancer Predicted cell location: Cytoplasm
Reactivity:	Human
Host:	Rabbit
Isotype:	IgG
Clonality:	Polyclonal
Immunogen:	Synthetic peptide of human STK32A
Formulation:	pH7.4 PBS, 0.05% NaN ₃ , 40% Glycerol
Concentration:	lot specific
Purification:	Antigen affinity purification
Conjugation:	Unconjugated
Storage:	Store at -20°C as received.
Stability:	Stable for 12 months from date of receipt.
Gene Name:	serine/threonine kinase 32A
Database Link:	NP_659438 Entrez Gene 202374 Human Q8WU08
Background:	STK32A (serine/threonine kinase 32A), also known as YANK1, is a 396 amino acid protein that belongs to the superfamily of serine/threonine protein kinases and exists as three isoforms. The gene encoding STK32A maps to human chromosome 5, which is associated with Cockayne syndrome through the ERCC8 gene and familial adenomatous polyposis through the adenomatous polyposis coli (APC) tumor suppressor gene. Treacher Collins syndrome is also chromosome 5 associated and is caused by insertions or deletions within the TCOF1 gene.
Synonyms:	YANK1



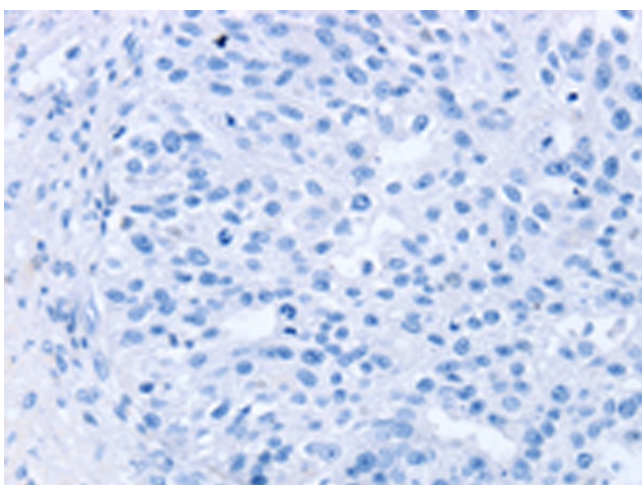
[View online »](#)

Protein Families: Druggable Genome, Protein Kinase

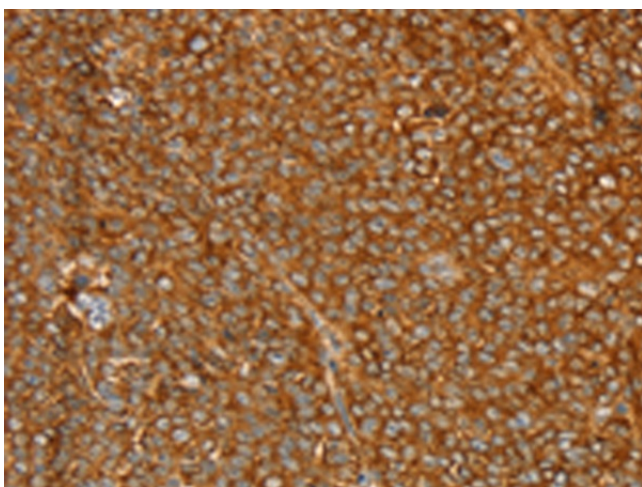
Product images:



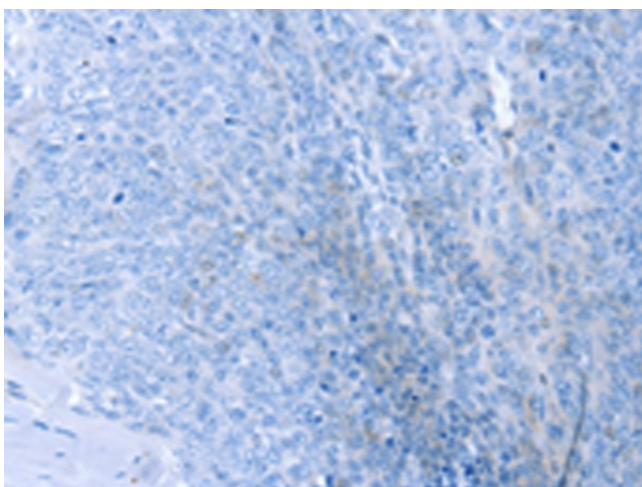
Immunohistochemistry of paraffin-embedded Human breast cancer tissue using TA351763 (STK32A Antibody) at dilution 1/35 (Original magnification: $\times 200$)



Immunohistochemistry of paraffin-embedded Human breast cancer tissue using TA351763 (STK32A Antibody) at dilution 1/35, treated with synthetic peptide. (Original magnification: $\times 200$)



Immunohistochemistry of paraffin-embedded Human ovarian cancer tissue using TA351763 (STK32A Antibody) at dilution 1/35 (Original magnification: $\times 200$)



Immunohistochemistry of paraffin-embedded Human ovarian cancer tissue using TA351763 (STK32A Antibody) at dilution 1/35, treated with synthetic peptide. (Original magnification: $\times 200$)