

## Product datasheet for **TA351761**

### STK36 Rabbit Polyclonal Antibody

#### Product data:

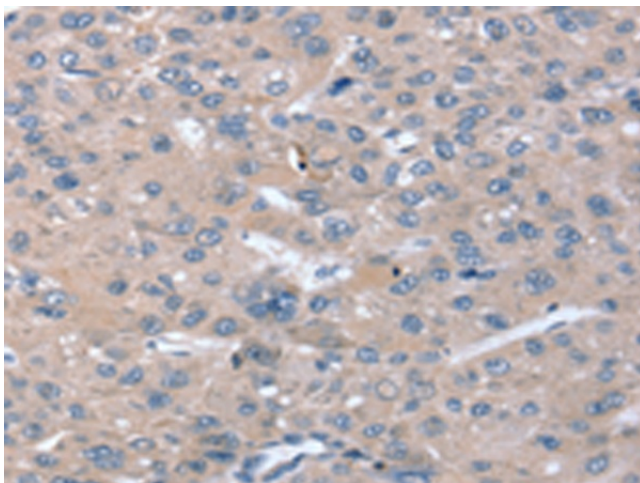
Product Type:	Primary Antibodies
Applications:	IHC
Recommended Dilution:	IHC: 10-50 Positive control: Human liver cancer Predicted cell location: Cytoplasm and Cell membrane
Reactivity:	Human
Host:	Rabbit
Isotype:	IgG
Clonality:	Polyclonal
Immunogen:	Synthetic peptide of human STK36
Formulation:	pH7.4 PBS, 0.05% NaN <sub>3</sub> , 40% Glycerol
Concentration:	lot specific
Purification:	Antigen affinity purification
Conjugation:	Unconjugated
Storage:	Store at -20°C as received.
Stability:	Stable for 12 months from date of receipt.
Gene Name:	serine/threonine kinase 36
Database Link:	<a href="#">NP_056505</a> <a href="#">Entrez Gene 27148 Human</a> <a href="#">Q9NRP7</a>
Background:	This gene encodes a member of the serine/threonine kinase family of enzymes. This family member is similar to a Drosophila protein that plays a key role in the Hedgehog signaling pathway. This human protein is a positive regulator of the GLI zinc-finger transcription factors. Knockout studies of the homologous mouse gene suggest that defects in this human gene may lead to congenital hydrocephalus, possibly due to a functional defect in motile cilia.
Synonyms:	FU
Protein Families:	Druggable Genome, Protein Kinase



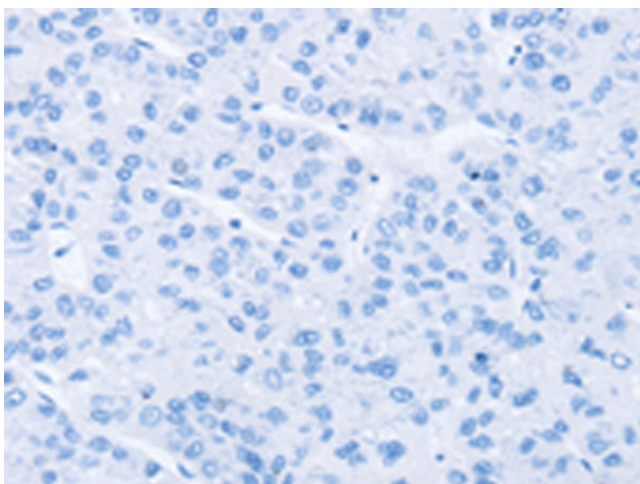
[View online »](#)

Protein Pathways: Basal cell carcinoma, Hedgehog signaling pathway, Pathways in cancer

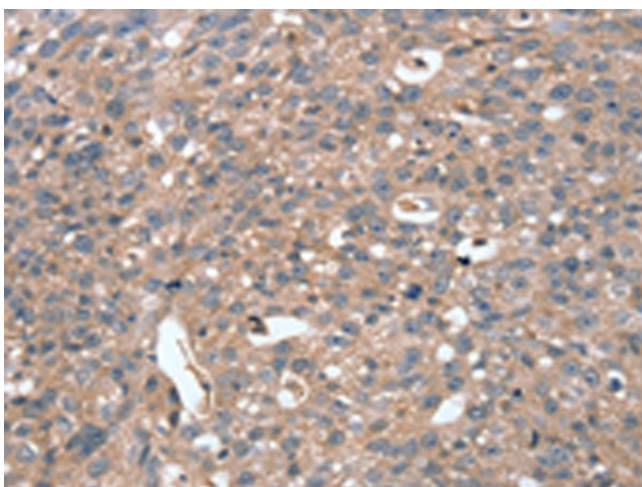
**Product images:**



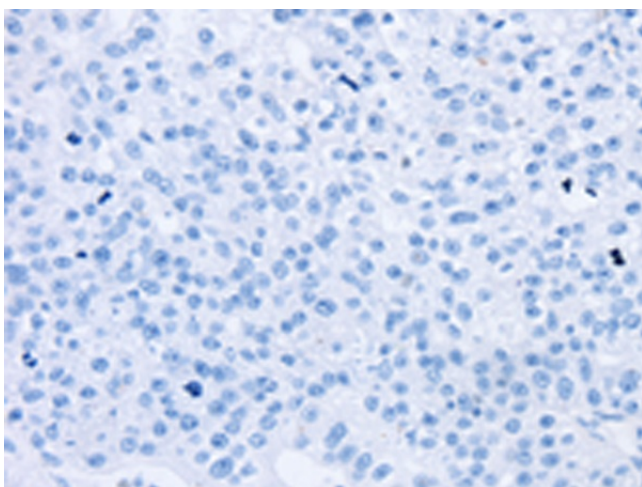
Immunohistochemistry of paraffin-embedded Human liver cancer tissue using TA351761 (STK36 Antibody) at dilution 1/20 (Original magnification:  $\times 200$ )



Immunohistochemistry of paraffin-embedded Human liver cancer tissue using TA351761 (STK36 Antibody) at dilution 1/20, treated with synthetic peptide. (Original magnification:  $\times 200$ )



Immunohistochemistry of paraffin-embedded Human breast cancer tissue using TA351761 (STK36 Antibody) at dilution 1/20 (Original magnification:  $\times 200$ )



Immunohistochemistry of paraffin-embedded Human breast cancer tissue using TA351761 (STK36 Antibody) at dilution 1/20, treated with synthetic peptide. (Original magnification:  $\times 200$ )