

Product datasheet for **TA351758**

SSX5 Rabbit Polyclonal Antibody

Product data:

Product Type:	Primary Antibodies
Applications:	WB
Recommended Dilution:	WB: 200-1000 WB positive control: A431, Jurkat and Raji cells
Reactivity:	Human
Host:	Rabbit
Isotype:	IgG
Clonality:	Polyclonal
Immunogen:	Synthetic peptide of human SSX5
Formulation:	pH7.4 PBS, 0.05% NaN ₃ , 40% Glycerol
Concentration:	lot specific
Purification:	Antigen affinity purification
Conjugation:	Unconjugated
Storage:	Store at -20°C as received.
Stability:	Stable for 12 months from date of receipt.
Predicted Protein Size:	22 kDa
Gene Name:	SSX family member 5
Database Link:	NP_783729 Entrez Gene 6758 Human O60225

Background: The product of this gene belongs to the family of highly homologous synovial sarcoma X (SSX) breakpoint proteins. These proteins may function as transcriptional repressors. They are also capable of eliciting spontaneous humoral and cellular immune responses in cancer patients, and are potentially useful targets in cancer vaccine-based immunotherapy. While some of the related SSX genes are involved in t(X;18)(p11.2;q11.2) translocations that are characteristically found in all synovial sarcomas, this gene does not appear to be involved in such translocations.

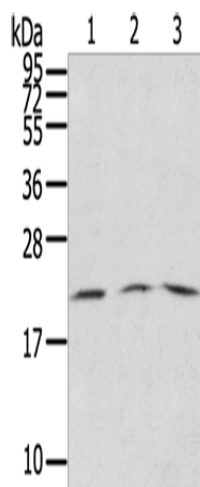
Synonyms: MGC9494



[View online »](#)

Protein Families: Transcription Factors

Product images:



Gel: 12%SDS-PAGE

Lysate: 60 µg

Lane 1-3: A431 cells

Jurkat cells

Raji cells

Primary antibody: TA351758 (SSX5 Antibody) at dilution 1/200

Secondary antibody: Goat anti rabbit IgG at 1/8000 dilution

Exposure time: 30 seconds