

Product datasheet for **TA351752S**

SRGAP1 Rabbit Polyclonal Antibody

Product data:

Product Type:	Primary Antibodies
Applications:	IHC, WB
Recommended Dilution:	WB: 500-2000 WB positive control: Hepg2, TM4, 293T and NIH/3T3 cells IHC: 25-100 Positive control: Human liver cancer Predicted cell location: Cytoplasm or Nucleus
Reactivity:	Human, Mouse
Host:	Rabbit
Isotype:	IgG
Clonality:	Polyclonal
Immunogen:	Synthetic peptide of human SRGAP1
Formulation:	pH7.4 PBS, 0.05% NaN ₃ , 40% Glycerol
Purification:	Antigen affinity purification
Conjugation:	Unconjugated
Storage:	Store at -20°C as received.
Stability:	Stable for 12 months from date of receipt.
Predicted Protein Size:	124 kDa
Gene Name:	SLIT-ROBO Rho GTPase activating protein 1
Database Link:	NP_065813 Entrez Gene 117600 Mouse Entrez Gene 57522 Human Q7Z6B7

Background: SRGAP1 contains an FCH (Fes/CIP4 homology) domain, a Rho-GAP domain and an SH3 domain. In the presence of Slit, SRGAP1 (via its SH3 domain) binds to the CC3 motif in robo (a protein responsible for mediating the repulsive effect of Slit) with higher affinity and inhibits Cdc42 activity in a robo/SRGAP-dependent manner. More specifically, SRGAP1 increases the intrinsic GTPase activity of Cdc42, thereby converting it to its inactive, GDP-bound form. Inactivation of Cdc42 ultimately leads to a decrease in actin polymerization.

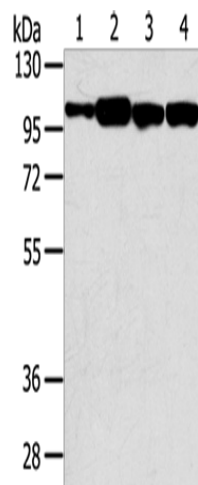


[View online »](#)

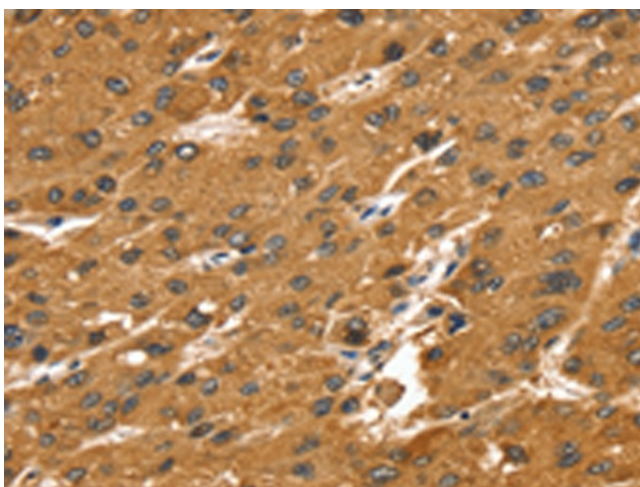
Synonyms: ARHGAP13; NMTC2

Protein Pathways: Axon guidance

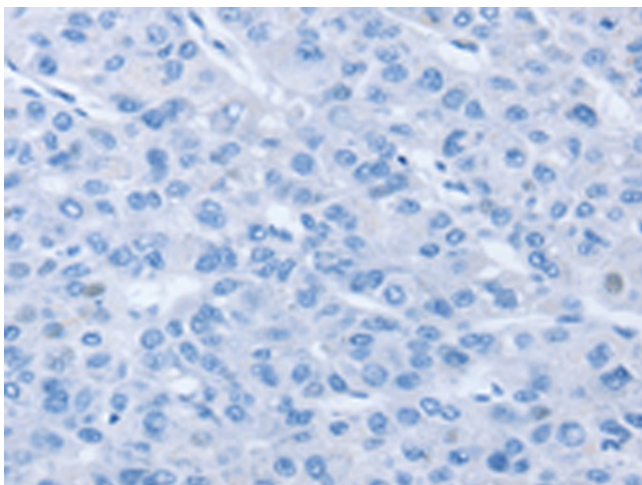
Product images:



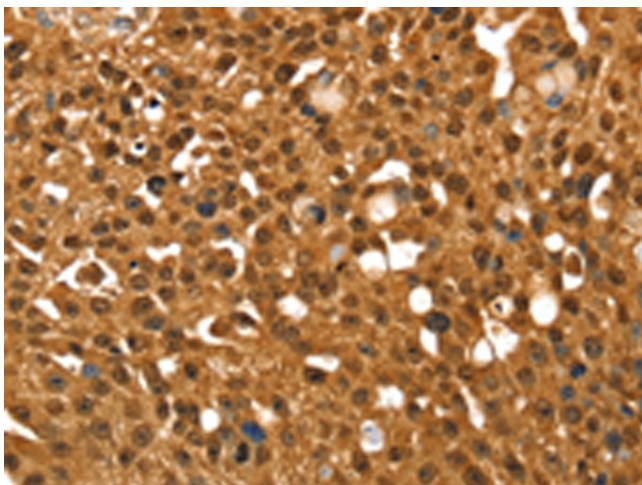
Gel: 6%SDS-PAGE
Lysate: 40 μ g
Lane 1-4: Hepg2 cells
TM4 cells
293T cells
NIH/3T3 cells
Primary antibody: [TA351752] (SRGAP1 Antibody)
at dilution 1/200
Secondary antibody: Goat anti rabbit IgG at
1/8000 dilution
Exposure time: 20 seconds



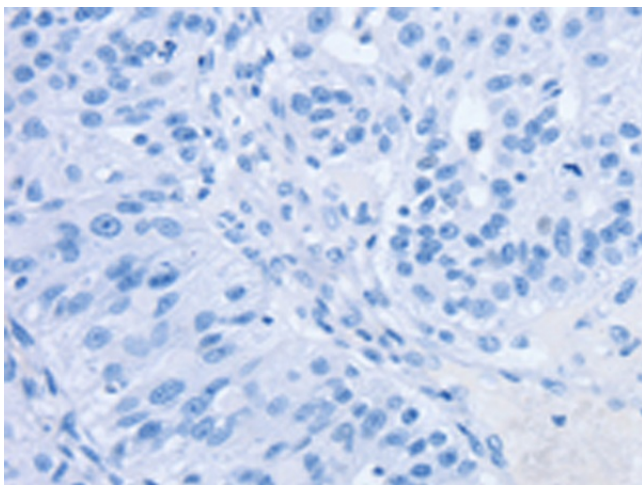
Immunohistochemistry of paraffin-embedded
Human liver cancer tissue using [TA351752]
(SRGAP1 Antibody) at dilution 1/25 (Original
magnification: \times 200)



Immunohistochemistry of paraffin-embedded Human liver cancer tissue using [TA351752] (SRGAP1 Antibody) at dilution 1/25, treated with synthetic peptide. (Original magnification: ×200)



Immunohistochemistry of paraffin-embedded Human breast cancer tissue using [TA351752] (SRGAP1 Antibody) at dilution 1/25 (Original magnification: ×200)



Immunohistochemistry of paraffin-embedded Human breast cancer tissue using [TA351752] (SRGAP1 Antibody) at dilution 1/25, treated with synthetic peptide. (Original magnification: ×200)