

## Product datasheet for **TA351749**

### Alpha Fodrin (SPTAN1) Rabbit Polyclonal Antibody

#### Product data:

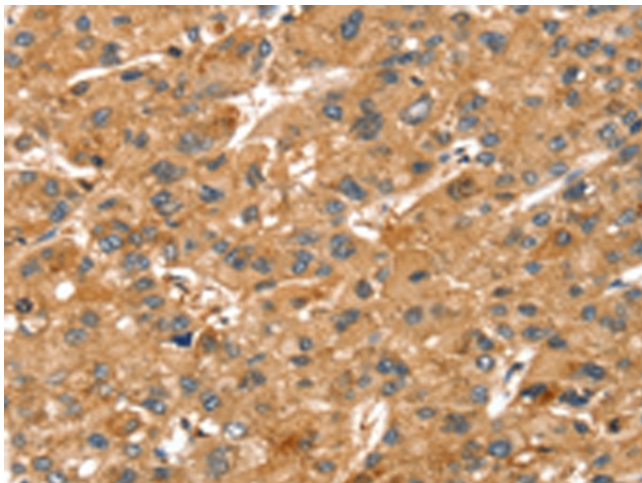
Product Type:	Primary Antibodies
Applications:	IHC
Recommended Dilution:	IHC: 25-100 Positive control: Human liver cancer Predicted cell location: Cell membrane and Cytoplasm
Reactivity:	Human, Mouse, Rat
Host:	Rabbit
Isotype:	IgG
Clonality:	Polyclonal
Immunogen:	Synthetic peptide of human SPTAN1
Formulation:	pH7.4 PBS, 0.05% NaN <sub>3</sub> , 40% Glycerol
Concentration:	lot specific
Purification:	Antigen affinity purification
Conjugation:	Unconjugated
Storage:	Store at -20°C as received.
Stability:	Stable for 12 months from date of receipt.
Gene Name:	spectrin alpha, non-erythrocytic 1
Database Link:	<a href="#">NP_003118</a> <a href="#">Entrez Gene 20740 Mouse</a> <a href="#">Entrez Gene 64159 Rat</a> <a href="#">Entrez Gene 6709 Human</a> <a href="#">Q13813</a>
Background:	Spectrins are a family of filamentous cytoskeletal proteins that function as essential scaffold proteins that stabilize the plasma membrane and organize intracellular organelles. Spectrins are composed of alpha and beta dimers that associate to form tetramers linked in a head-to-head arrangement. This gene encodes an alpha spectrin that is specifically expressed in nonerythrocytic cells. The encoded protein has been implicated in other cellular functions including DNA repair and cell cycle regulation.
Synonyms:	EIEE5; NEAS; SPTA2
Protein Families:	Druggable Genome



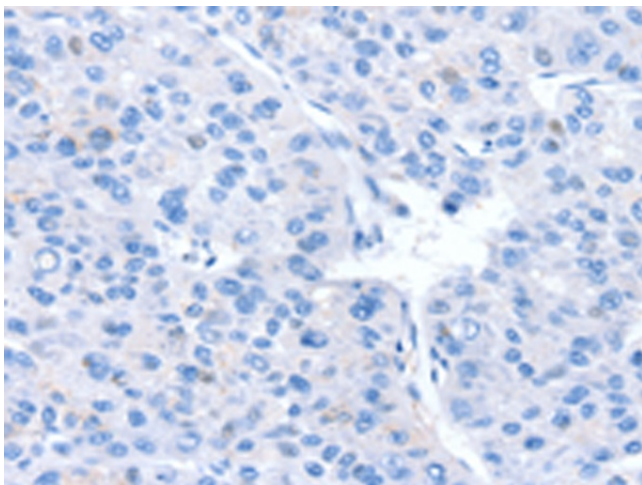
[View online »](#)

Protein Pathways: Tight junction

### Product images:



Immunohistochemistry of paraffin-embedded Human liver cancer tissue using TA351749 (SPTAN1 Antibody) at dilution 1/40 (Original magnification: ×200)



Immunohistochemistry of paraffin-embedded Human liver cancer tissue using TA351749 (SPTAN1 Antibody) at dilution 1/40, treated with synthetic peptide. (Original magnification: ×200)