

## Product datasheet for **TA351748S**

### SPATA5L1 Rabbit Polyclonal Antibody

#### Product data:

Product Type:	Primary Antibodies
Applications:	IHC, WB
Recommended Dilution:	WB: 200-1000 WB positive control: A549 and A172 cells IHC: 25-100 Positive control: Human brain Predicted cell location: Cytoplasm
Reactivity:	Human
Host:	Rabbit
Isotype:	IgG
Clonality:	Polyclonal
Immunogen:	Synthetic peptide of human SPATA5L1
Formulation:	pH7.4 PBS, 0.05% NaN <sub>3</sub> , 40% Glycerol
Purification:	Antigen affinity purification
Conjugation:	Unconjugated
Storage:	Store at -20°C as received.
Stability:	Stable for 12 months from date of receipt.
Predicted Protein Size:	81 kDa
Gene Name:	spermatogenesis associated 5 like 1
Database Link:	<a href="#">NP_076968</a> <a href="#">Entrez Gene 79029 Human</a> <a href="#">Q9BVQ7</a>

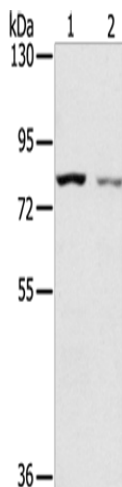
**Background:** SPATA5L1 (spermatogenesis-associated protein 5-like protein 1) is a 753 amino acid protein belonging to the AAA ATPase family and AFG2 subfamily. Single nucleotide polymorphisms (SNPs) present in SPATA5L1 at the glycine amidinotransferase (GATM)-SPATA5L1 locus have been found to correlate with glomerular filtration rate (GFR), having significant implications for kidney disease research. SPATA5L1 localizes to cytoplasm and exists as three alternatively spliced isoforms.



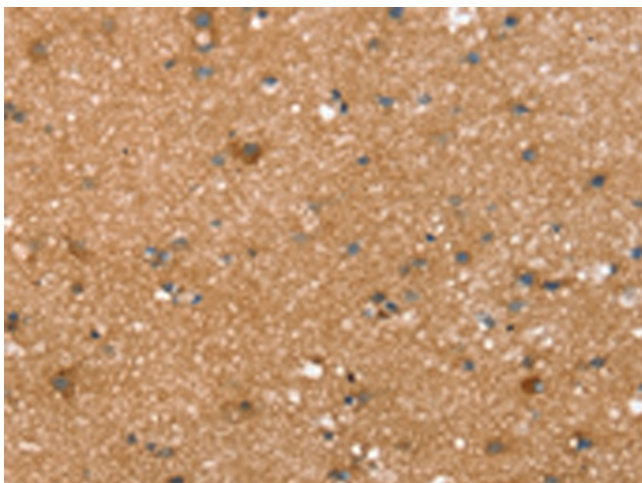
[View online »](#)

Synonyms: FLJ12286; MGC5347

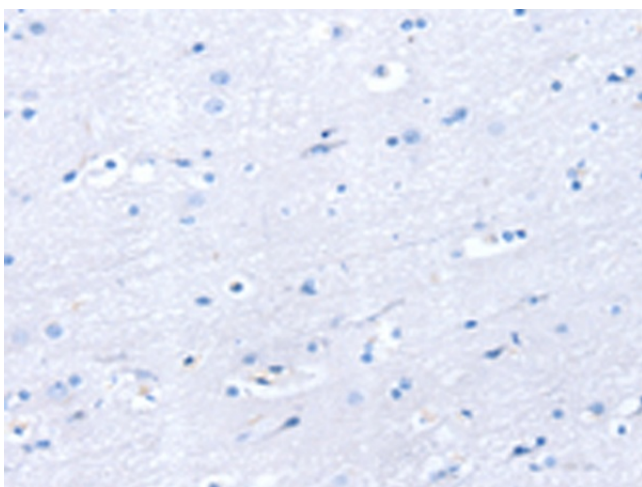
## Product images:



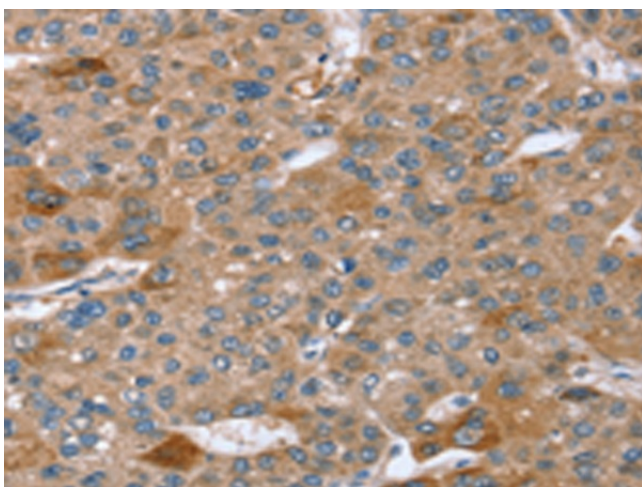
Gel: 6%SDS-PAGE  
Lysate: 40 µg  
Lane 1-2: A549 cells  
A172 cells  
Primary antibody: [TA351748] (SPATA5L1 Antibody) at dilution 1/200  
Secondary antibody: Goat anti rabbit IgG at 1/8000 dilution  
Exposure time: 2 minutes



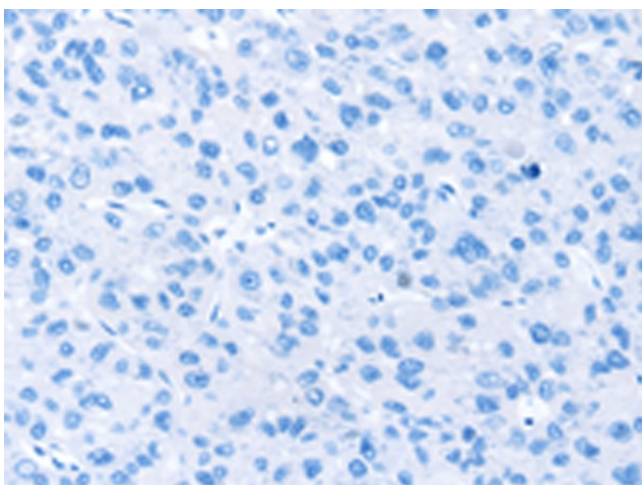
Immunohistochemistry of paraffin-embedded Human brain tissue using [TA351748] (SPATA5L1 Antibody) at dilution 1/20 (Original magnification: ×200)



Immunohistochemistry of paraffin-embedded Human brain tissue using [TA351748] (SPATA5L1 Antibody) at dilution 1/20, treated with synthetic peptide. (Original magnification: ×200)



Immunohistochemistry of paraffin-embedded Human liver cancer tissue using [TA351748] (SPATA5L1 Antibody) at dilution 1/20 (Original magnification: ×200)



Immunohistochemistry of paraffin-embedded Human liver cancer tissue using [TA351748] (SPATA5L1 Antibody) at dilution 1/20, treated with synthetic peptide. (Original magnification: ×200)