

Product datasheet for **TA351748**

SPATA5L1 Rabbit Polyclonal Antibody

Product data:

Product Type:	Primary Antibodies
Applications:	IHC, WB
Recommended Dilution:	WB: 200-1000 WB positive control: A549 and A172 cells IHC: 25-100 Positive control: Human brain Predicted cell location: Cytoplasm
Reactivity:	Human
Host:	Rabbit
Isotype:	IgG
Clonality:	Polyclonal
Immunogen:	Synthetic peptide of human SPATA5L1
Formulation:	pH7.4 PBS, 0.05% NaN ₃ , 40% Glycerol
Concentration:	lot specific
Purification:	Antigen affinity purification
Conjugation:	Unconjugated
Storage:	Store at -20°C as received.
Stability:	Stable for 12 months from date of receipt.
Predicted Protein Size:	81 kDa
Gene Name:	spermatogenesis associated 5 like 1
Database Link:	NP_076968 Entrez Gene 79029 Human Q9BVQ7



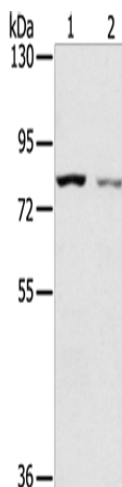
[View online »](#)

Background:

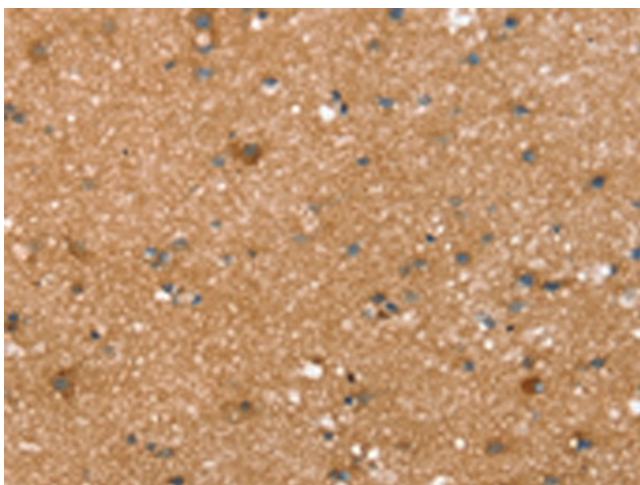
SPATA5L1 (spermatogenesis-associated protein 5-like protein 1) is a 753 amino acid protein belonging to the AAA ATPase family and AFG2 subfamily. Single nucleotide polymorphisms (SNPs) present in SPATA5L1 at the glycine amidinotransferase (GATM)-SPATA5L1 locus have been found to correlate with glomerular filtration rate (GFR), having significant implications for kidney disease research. SPATA5L1 localizes to cytoplasm and exists as three alternatively spliced isoforms.

Synonyms:

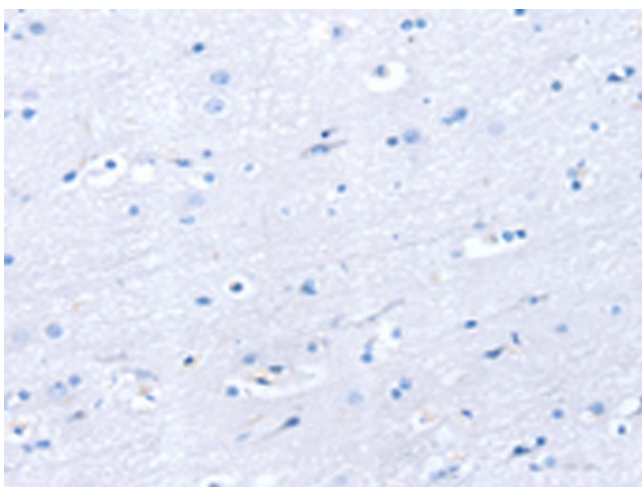
FLJ12286; MGC5347

Product images:


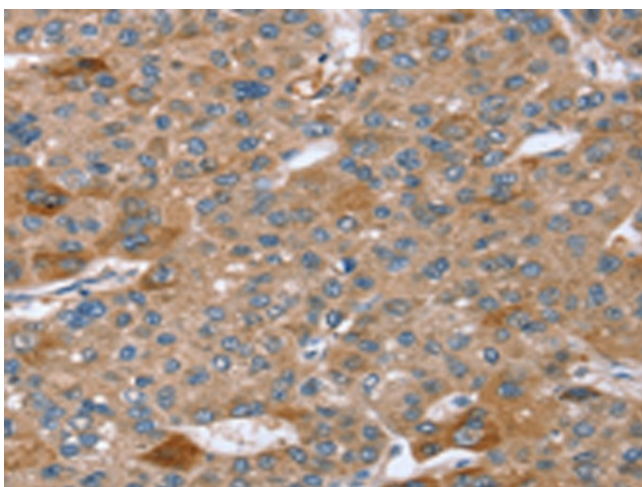
Gel: 6%SDS-PAGE
Lysate: 40 µg
Lane 1-2: A549 cells
A172 cells
Primary antibody: TA351748 (SPATA5L1 Antibody)
at dilution 1/200
Secondary antibody: Goat anti rabbit IgG at
1/8000 dilution
Exposure time: 2 minutes



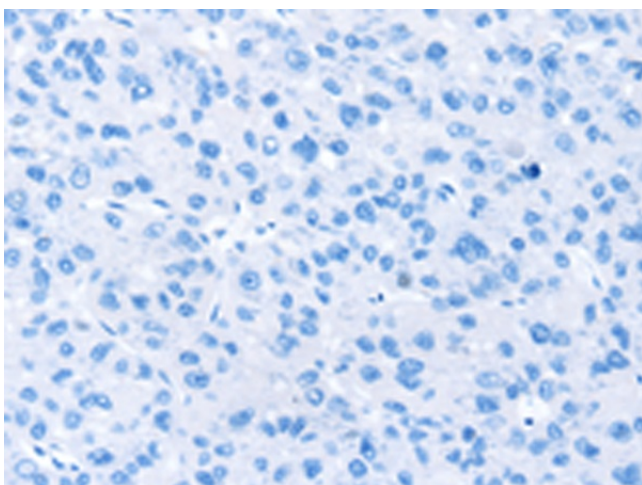
Immunohistochemistry of paraffin-embedded
Human brain tissue using TA351748 (SPATA5L1
Antibody) at dilution 1/20 (Original magnification:
×200)



Immunohistochemistry of paraffin-embedded Human brain tissue using TA351748 (SPATA5L1 Antibody) at dilution 1/20, treated with synthetic peptide. (Original magnification: ×200)



Immunohistochemistry of paraffin-embedded Human liver cancer tissue using TA351748 (SPATA5L1 Antibody) at dilution 1/20 (Original magnification: ×200)



Immunohistochemistry of paraffin-embedded Human liver cancer tissue using TA351748 (SPATA5L1 Antibody) at dilution 1/20, treated with synthetic peptide. (Original magnification: ×200)